

[www.jeffreygross.co.uk](http://www.jeffreygross.co.uk)

CARDIFF

VALE

CAERPHILLY

BRISTOL



*Cheltenham Road*

MONTPELLIER

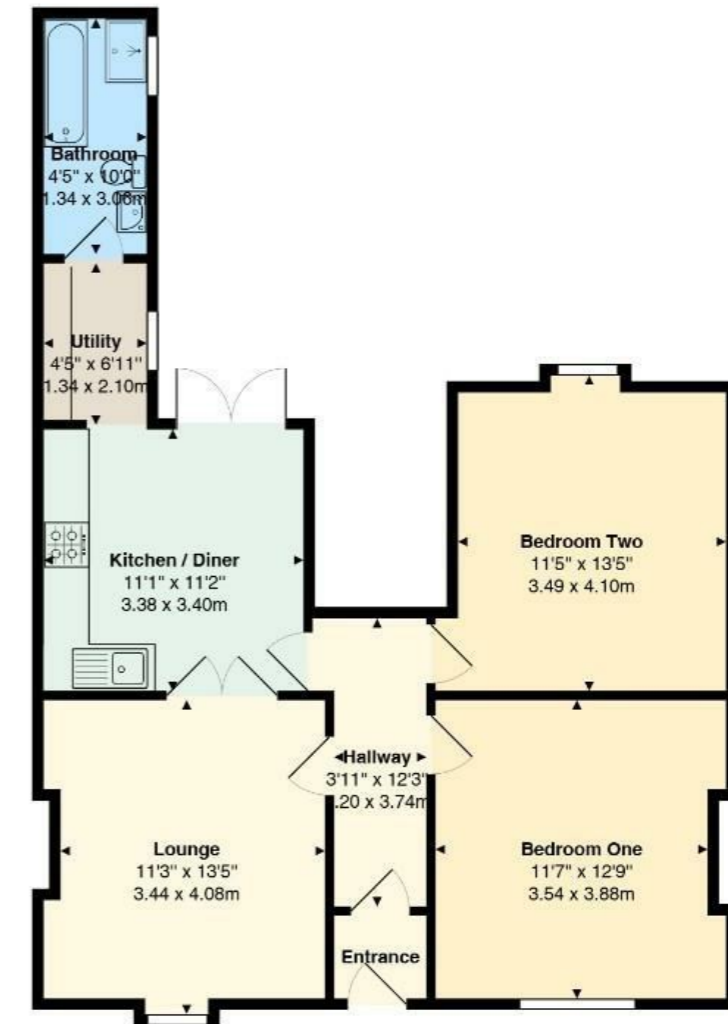


Comments by Ms Ashton Jones



**Property Specialist**  
**Ms Ashton Jones**  
Branch manager  
[a.jones@thepropertyoutlet.com](mailto:a.jones@thepropertyoutlet.com)

Cheltenham Road, Montpelier, Bristol, BS6 5RH



All measurements are approximate and for display purposes only

Comments by the Homeowner





# Cheltenham Road

Montpellier, Bristol, BS6 5RH

Offers In The Region Of

£425,000



2 Bedroom(s)



1 Bathroom(s)



828.00 sq ft



Contact our  
**Property Outlet Branch**

0117 935 4565

Nestled on the charming Cheltenham Road in Bristol, this delightful garden flat offers a perfect blend of historic character and modern convenience. Spanning an impressive 828 square feet, this spacious two-bedroom property is a rare find, especially given its Grade II listed status, which adds a unique charm and a sense of heritage.

Upon entering, you are welcomed into a generous reception room that exudes warmth and character, making it an ideal space for both relaxation and entertaining. The updated kitchen is a true highlight, featuring contemporary fittings that seamlessly blend with the flat's features. The bathroom has also been thoughtfully modernised, ensuring comfort and style for everyday living.

Both bedrooms are well-proportioned, providing ample space for rest and personalisation. The flat's garden is a delightful outdoor retreat, perfect for enjoying the fresh air or hosting gatherings with friends and family.

Situated within walking distance to the city centre, this property offers the convenience of urban living while maintaining a peaceful atmosphere. With its combination of spacious interiors, modern updates, and a prime location, this garden flat is an exceptional opportunity for those seeking a home in Bristol. Whether you are a first-time buyer or looking to downsize, this property is sure to impress.





- Entrance Hall
- Living Room
- Kitchen/Dining Room
- Bath/Shower Room & W/C
- Bedroom One
- Bedroom Two
- Rear Garden

CARDIFF

VALE

CAERPHILLY

BRISTOL

[www.jeffreygross.co.uk](http://www.jeffreygross.co.uk)



