



www.jeffreygross.co.uk

CARDIFF

VALE

CAERPHILLY

BRISTOL

Conygare Grove

FILTON



Comments by Miss Issy Prime

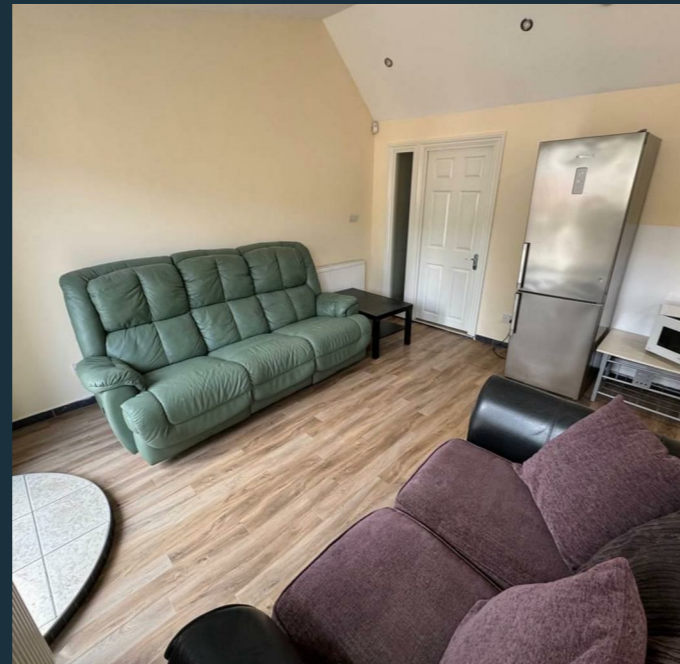
Property Specialist

Miss Issy Prime

Property Management Co-ordinator

i.prime@thepropertyoutlet.co.uk

Comments by the Homeowner





Conygre Grove

Filton, Bristol, BS34 7DW

Per Calendar Month

£3,000 Per Calendar Month



6 Bedroom(s)



3 Bathroom(s)



1399.31 sq ft



Contact our
Property Outlet Branch

0117 935 4565

* AVAILABLE 07.08.2026 *

FURNISHED SIX BEDROOM STUDENT PROPERTY! The Property Outlet are keen to offer this well presented end terrace house to the 2026-2027 market. On the ground floor there are two double bedrooms one with an en-suite, shower room and W/C, refitted kitchen and lounge and utility area. Upstairs are two double bedrooms and two single bedrooms and a bath/shower room and W.C White goods include fridge freezer (x2) a gas cooker and washing machine. Benefits include gas central heating and double glazing. The property is close to bus stops and train stations for good transport links to the city centre.

Holding Deposit £692.30



CARDIFF

VALE


CAERPHILLY

BRISTOL

www.jeffreygross.co.uk





| Energy Efficiency Rating | | Current | Potential |
|---|--|---|-----------|
| Very energy efficient - lower running costs | | | |
| (92 plus) A | | | |
| (81-91) B | | | |
| (69-80) C | | 70 | 70 |
| (55-68) D | | | |
| (39-54) E | | | |
| (21-38) F | | | |
| (1-20) G | | | |
| Not energy efficient - higher running costs | | | |
| England & Wales | | EU Directive 2002/91/EC  | |

