

www.jeffreygross.co.uk

CARDIFF

VALE

CAERPHILLY

BRISTOL



Latimer Close



Comments by Ms Beth Powles



Property Specialist
Ms Beth Powles
Tenancy Co-ordinator

b.powles@thepropertyoutlet.co.uk

Comments by the Homeowner



Latimer Close

, Bristol, BS4 4FG

Per Calendar Month

£1,100 Per Calendar Month



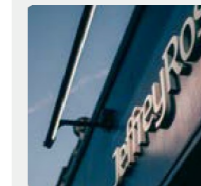
2 Bedroom(s)



2 Bathroom(s)



645.83 sq ft



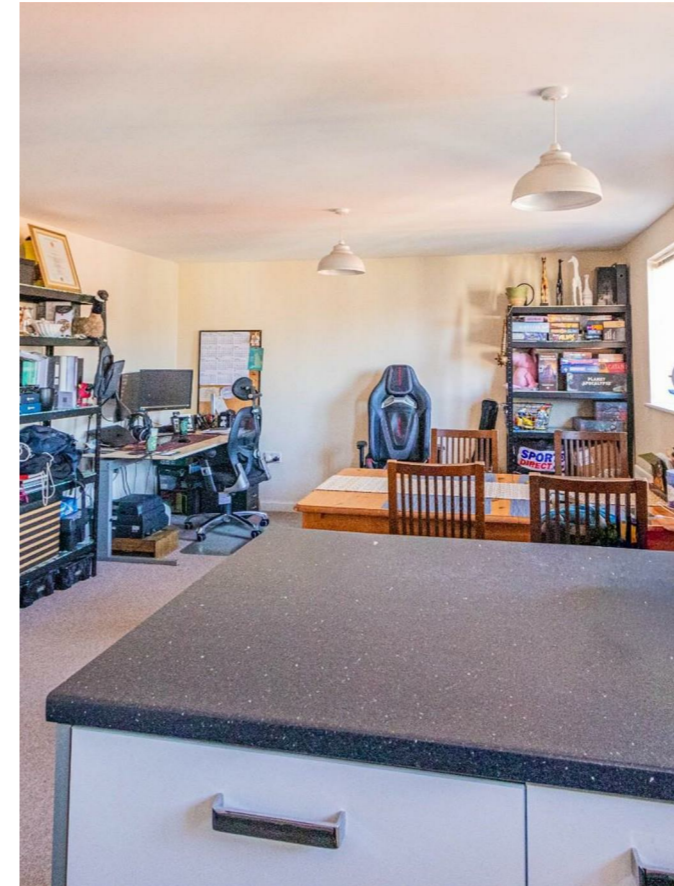
Contact our
Property Outlet Branch

0117 935 4565

* AVAILABLE 15.05.2026 *

TWO DOUBLE BEDROOM FLAT WITH AN EN/SUITE! Jeffrey ross & The Property Outlet are delighted to offer this modern second floor flat to the rental market. The accommodation comprises entrance hall, open plan kitchen/living room, two double bedrooms, ensuite shower room & w.c. with a further bath shower room & w.c.. The property further benefits from double glazing, gas central heating and off road parking. White goods include a washing machine, fridge freezer and gas hob/electric oven. The property is offered unfurnished and is close to local amenities and transport links.

Holding Deposit £253.84





CARDIFF

VALE

CAERPHILLY

BRISTOL

www.jeffreygross.co.uk



Energy Efficiency Rating

	Current	Potential
Very energy efficient - lower running costs		
(92 plus) A		
(81-91) B	81	81
(69-80) C		
(55-68) D		
(39-54) E		
(21-38) F		
(1-20) G		
Not energy efficient - higher running costs		

England & Wales

EU Directive 2002/91/EC

