



[www.jeffreygross.co.uk](http://www.jeffreygross.co.uk)

*Northville Road*

CARDIFF

VALE

CAERPHILLY

BRISTOL



Comments by Ms Olivia Melville-Brown



**Property Specialist**  
Ms Olivia Melville-Brown  
Branch manager

[o.melvillebrown@thepropertyoutlet.com](mailto:o.melvillebrown@thepropertyoutlet.com)

Comments by the Homeowner





# Northville Road

, Bristol, BS7 0RL

PCM

£2,995 PCM



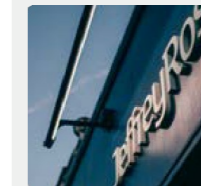
5 Bedroom(s)



2 Bathroom(s)



1130.22 sq ft



Contact our  
**Property Outlet Branch**

0117 935 4565

\* AVAILABLE 01.07.2026 \*

WELL PRESENTED FIVE BEDROOM HOUSE. The Property Outlet & Jeffrey Ross are pleased to present this refurbished five-bedroom house, located just off Filton Avenue. This is a premium, well-maintained shared home. The accommodation is arranged over two floors and consists of four double bedrooms and a large single bedroom, two bathrooms, an open-plan living area with kitchen/diner and access out to the rear garden. The property further benefits from off-street parking for two cars.



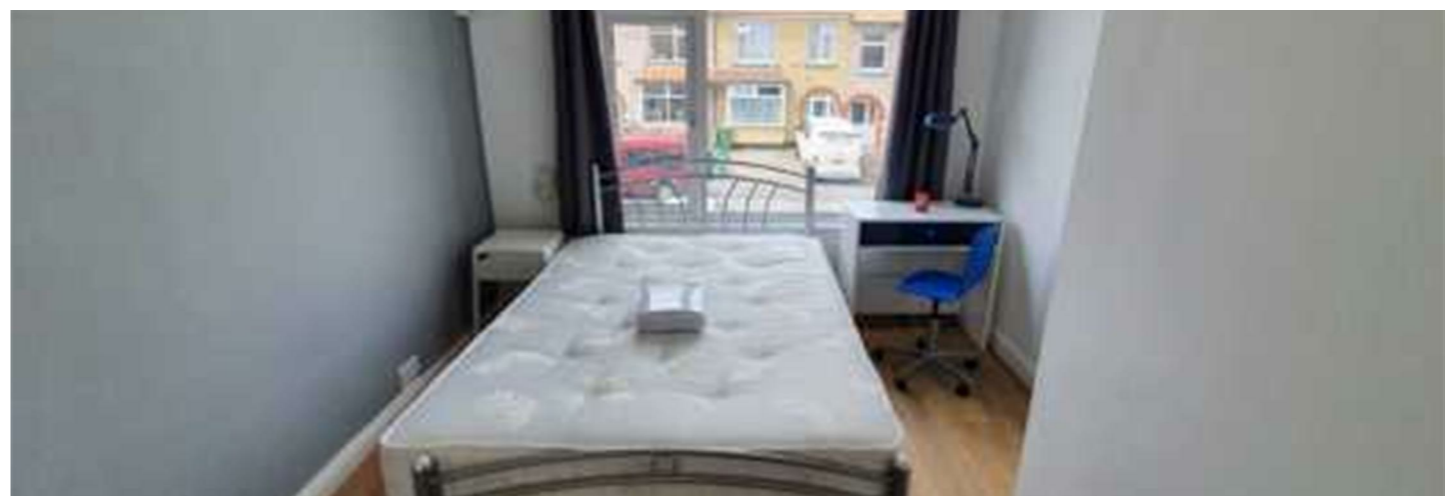
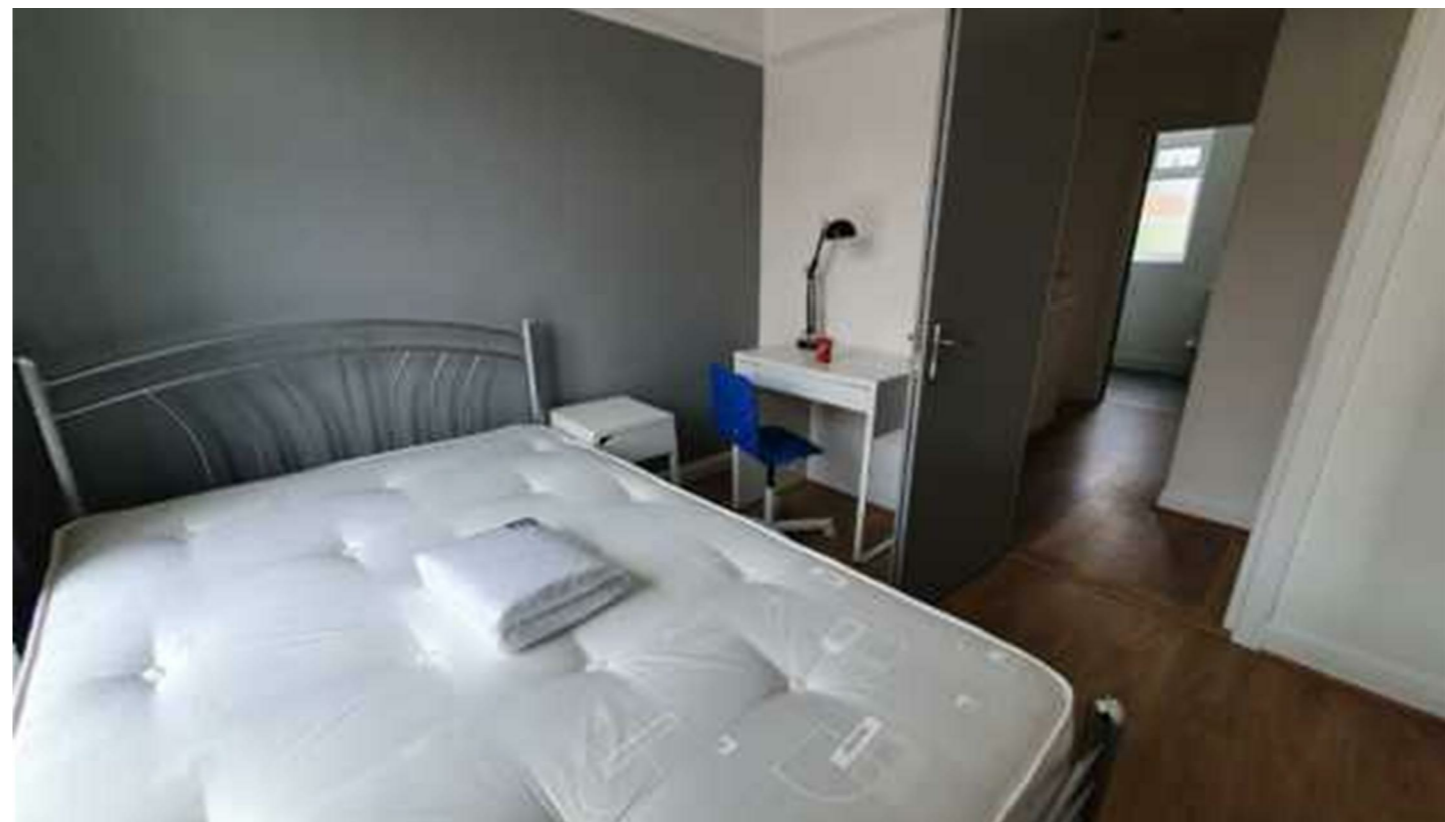
CARDIFF

VALE

CAERPHILLY

BRISTOL

[www.jeffreygross.co.uk](http://www.jeffreygross.co.uk)





| Energy Efficiency Rating                    |  | Current                 | Potential |
|---|--|-------------------------|-----------|
| Very energy efficient - lower running costs |  |                         |           |
| (92 plus) A                                 |  |                         | 87        |
| (81-91) B                                   |  | 74                      |           |
| (69-80) C                                   |  |                         |           |
| (55-68) D                                   |  |                         |           |
| (39-54) E                                   |  |                         |           |
| (21-38) F                                   |  |                         |           |
| (1-20) G                                    |  |                         |           |
| Not energy efficient - higher running costs |  |                         |           |
| England & Wales                             |  | EU Directive 2002/91/EC |           |

