



www.jeffreygross.co.uk

CARDIFF

VALE

CAERPHILLY

BRISTOL

Manx Road

HORFIELD



Comments by Ms Olivia Melville-Brown

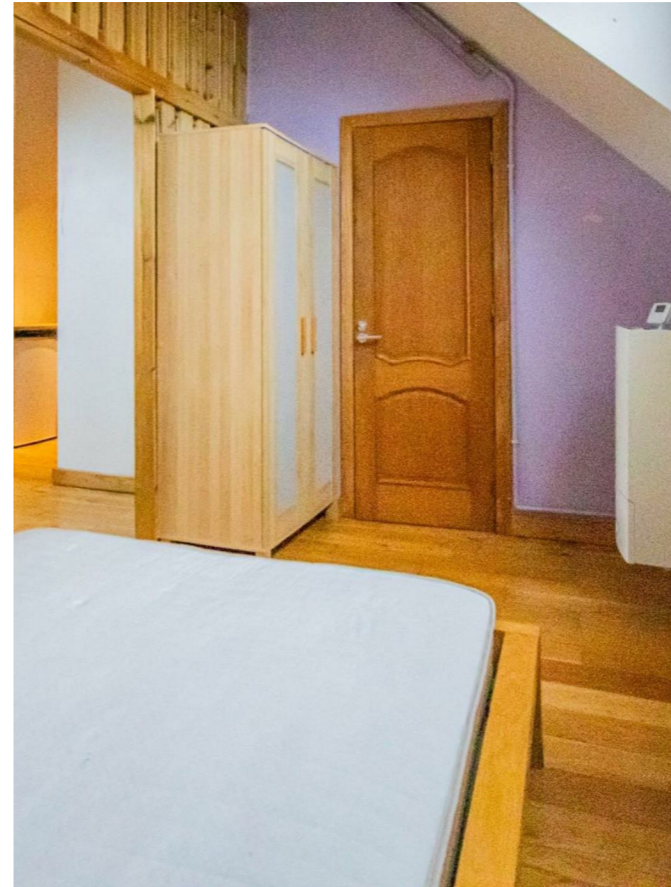


Property Specialist
Ms Olivia Melville-Brown
Branch manager

o.melvillebrown@thepropertyoutlet.com

Comments by the Homeowner





Manx Road

Horfield, Bristol, BS7 0JH

PCM

£1,050 PCM



1 Bedroom(s)



1 Bathroom(s)



387.50 sq ft



Contact our
Property Outlet Branch

0117 935 4565

* AVAILABLE NOW *

STUDIO APARTMENT! The Property Outlet & Jeffrey Ross are delighted to offer to the rental market this First Floor Studio Apartment. The accommodation comprises Open Plan Kitchen/Living Room with a Partitioned Double Bedroom and Separate Shower Room & WC . This first floor apartment is offered furnished with White Goods that include a Washing Machine, Fridge/Freezer, Gas Hob & Electric Oven. Great location for local employees of the MOD, SOUTHMEAD HOSPITAL, AIRBUS & ROLLS-ROYCE. Close to local transport links & local shops.

Damage Deposit £1212.69





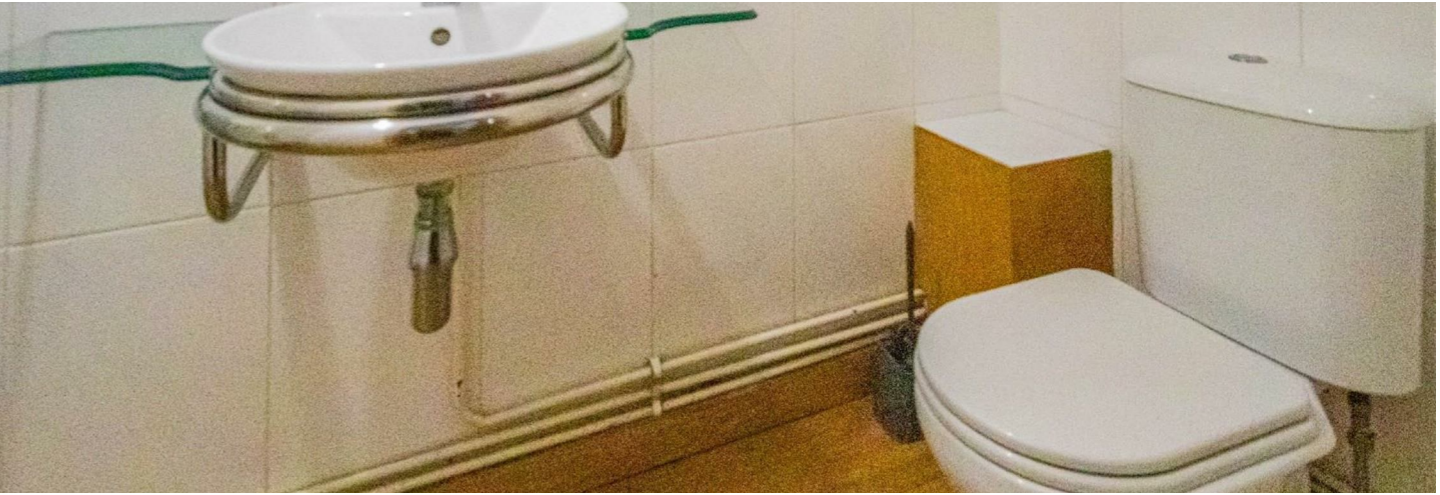
CARDIFF

VALE

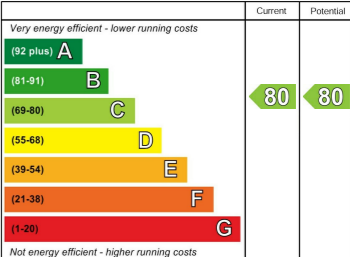
CAERPHILLY

BRISTOL

www.jeffreygross.co.uk



Energy Efficiency Rating



England & Wales

EU Directive 2002/91/EC

