



[www.jeffreygross.co.uk](http://www.jeffreygross.co.uk)

CARDIFF

VALE

CAERPHILLY

BRISTOL



North Street  
Southville

*North Street*

SOUTHVILLE

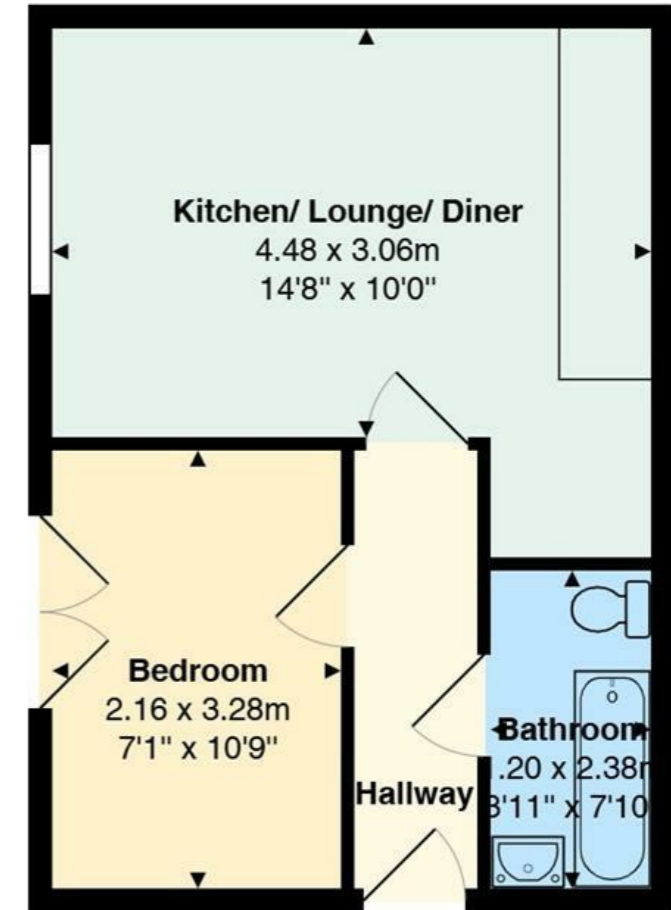


Comments by Ms Ellie Powell



**Property Specialist**  
**Ms Ellie Powell**  
 Sales Negotiator  
 ellie.powell@jeffreycross.co.uk

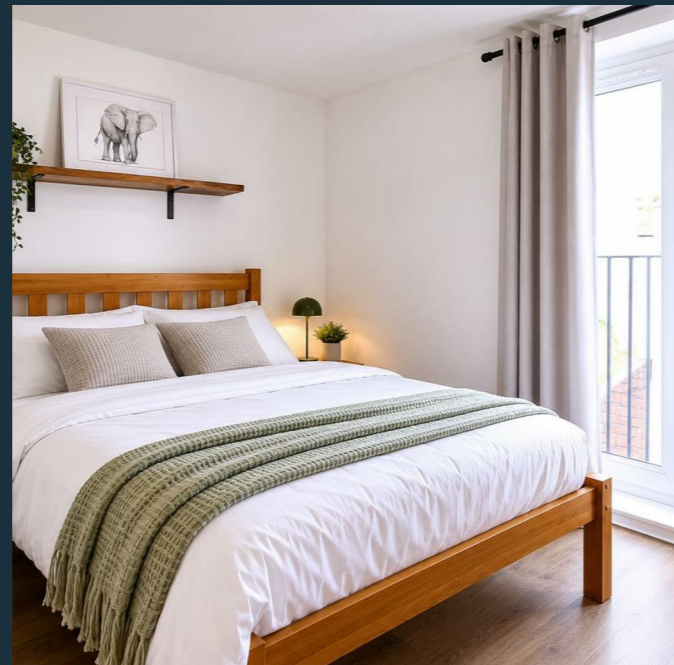
**North Corner, 120, North Street, Bedminster, Bristol, BS3 1HF**



All measurements are approximate and for display purposes only

*This flat has been an absolute joy to own a bright, cosy, and welcoming space that is always a delight to return home to. What first drew me to the property, and what remains its biggest highlight, is its unbeatable location on North Street. You are perfectly positioned to enjoy the very best of Bristol living: Right on Your Doorstep: Incredible independent pubs, fantastic restaurants, and vibrant live music and comedy venues. A stone's throw away from both Ashton Court and Victoria Park for those slower, more peaceful days. From last-minute match days watching the rugby or football at Ashton Gate, to quiet Sunday mornings strolling through the Tobacco Factory Markets, the variety of entertainment here is unmatched. Whether you are looking for a bustling social life close to the city or a peaceful retreat near green spaces, this flat offers the ultimate Bristol lifestyle. I have no doubt the next owner will love living here just as much as I have.*

Comments by the Homeowner





# North Street

*Southville, Bristol, BS3 1HF*

Offers In The Region Of

**£185,000**



1 Bedroom(s)



1 Bathroom(s)



sq ft



Contact our  
**Property Outlet Branch**

0117 935 4565

Nestled in the sought-after location of Southville, Bristol, this charming one-bedroom house on North Street presents an excellent opportunity for both investors and first-time buyers. The property boasts a well-designed layout that maximises space and comfort, making it an ideal retreat in the heart of the city.

The bedroom offers a peaceful sanctuary, perfect for unwinding after a busy day, while the bathroom is conveniently located to serve both residents and guests. The house is situated in a vibrant neighbourhood, where city living meets the tranquillity of quiet walks, allowing you to enjoy the best of both worlds.

With easy access to local amenities, shops, and transport links, this property is perfectly positioned for those who appreciate the convenience of urban life. Whether you are looking to invest in a promising rental opportunity or seeking your first home, this delightful house is sure to meet your needs. Don't miss the chance to make this property your own in one of Bristol's most desirable areas.





#### Communal Entrance

Stair access to all floors, communal mailboxes.

**Kitchen / Lounge 14'2" x 12'9" (4.33 x 3.90)**

**Bathroom 3'11" x 7'9" (1.20 x 2.37)**

**Hallway 10'9" x 3'0" (3.28 x 0.92)**

**Bedroom 10'6" x 7'0" (3.21 x 2.15)**

#### Tenure

We are informed that the property is Leasehold, this is to be confirmed by your legal advisor.

#### Parking

There's no parking space with the property but is free on street parking nearby or option to by a permit or space if one becomes available.

#### Council Tax

Band - A



