

[www.jeffreygross.co.uk](http://www.jeffreygross.co.uk)

CARDIFF

VALE

CAERPHILLY

BRISTOL



*Lower Burlington Road*

PORTISHEAD



Comments by Ms Olivia Melville-Brown



**Property Specialist**  
Ms Olivia Melville-Brown  
Branch manager

[o.melvillebrown@thepropertyoutlet.com](mailto:o.melvillebrown@thepropertyoutlet.com)

Comments by the Homeowner







# Lower Burlington

*Portishead, Bristol, BS20 7AX*

PCM

**£1,400 PCM**



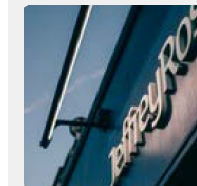
2 Bedroom(s)



2 Bathroom(s)



861.12 sq ft



Contact our  
***Property Outlet Branch***

0117 935 4565

\* AVAIALBLE 27.2.2026 \*

APARTMENT WITH PARKING. This property comprises of TWO BEDROOMS one WITH EN-SUITE, KITCHEN, LIVING ROOM & a BATH/SHOWER ROOM & WC. Benefits include Gas Central Heating, DOUBLE GLAZING. Offered UNFURNISHED, WHITE GOODS include WASHING MACHINE, FRIDGE/FREEZER & ELECTRIC HOB/ELECTRIC OVEN. The Property is in a Great Location with viewings over looking the Harbour. Ideal for a PROFESSIONAL COUPLE or SINGLE PERSON.

Holding Deposit £323.07



CARDIFF

VALE

CAERPHILLY

BRISTOL

[www.jeffreygross.co.uk](http://www.jeffreygross.co.uk)







Energy Efficiency Rating		
	Current	Potential
Very energy efficient - lower running costs		
(92 plus) A		
(81-91) B		
(69-80) C	75	77
(55-68) D		
(39-54) E		
(21-38) F		
(1-20) G		
Not energy efficient - higher running costs		
England & Wales		EU Directive 2002/91/EC