



[www.jeffreygross.co.uk](http://www.jeffreygross.co.uk)

*Filton Grove*

CARDIFF

VALE

CAERPHILLY

BRISTOL



Comments by Ms Olivia Melville-Brown

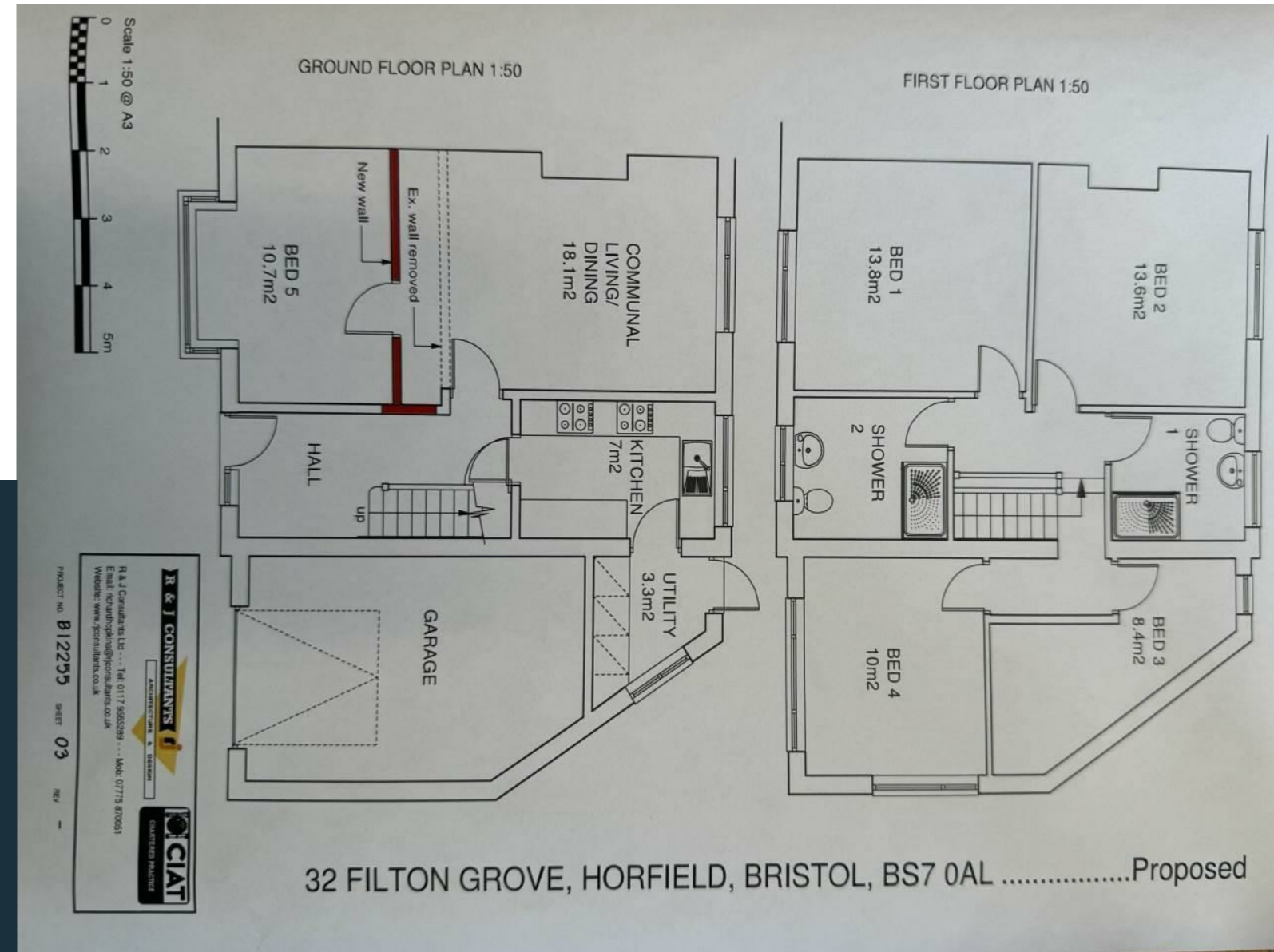


**Property Specialist**  
**Ms Olivia Melville-Brown**  
 Branch manager

[o.melvillebrown@thepropertyoutlet.com](mailto:o.melvillebrown@thepropertyoutlet.com)



Comments by the Homeowner



# Filton Grove

, Bristol, BS7 0AL

PCM

£3,250 PCM



5 Bedroom(s)



2 Bathroom(s)



1356.00 sq ft



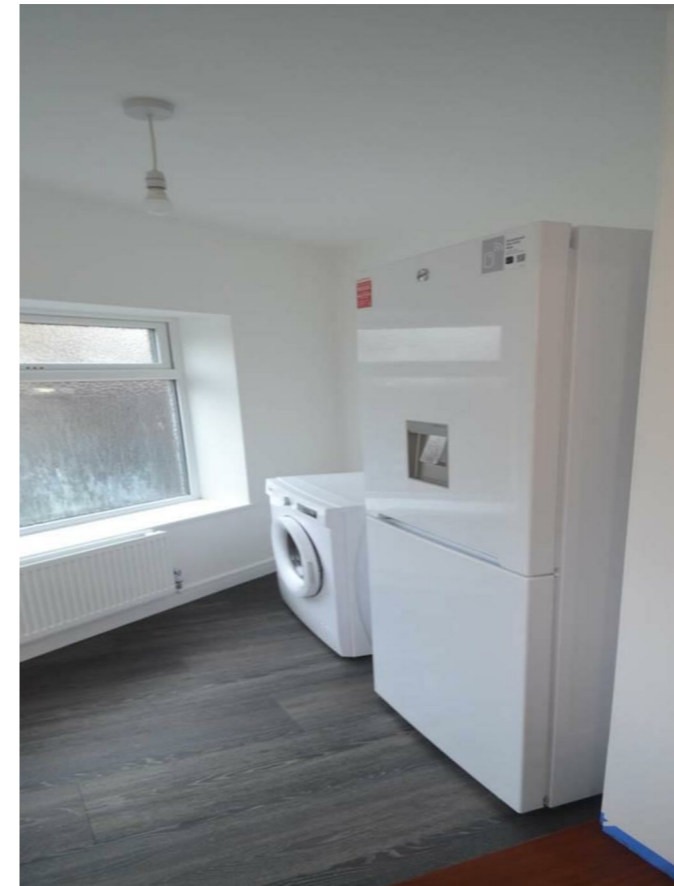
Contact our  
**Property Outlet Branch**

0117 935 4565

\*AVAILABLE 06.08.2026 \*

FIVE BEDROOM HOME - WELL PRESENTED FURNISHED HOUSE! The Property Outlet are keen to offer THIS BRAND-NEW STUDENT/PROFESSIONAL HOUSE to the rental market. The accommodation comprises ENTRANCE HALL, LIVING ROOM, BEDROOM ONE, REFITTED KITCHEN, UTILITY ROOM. On the second floor there are FOUR DOUBLE BEDROOMS & a TWO SHOWER ROOM/WC. WHITE GOODS INCLUDE a FRIDGE/FREEZER, ELECTRIC OVEN/HOB & a WASHING MACHINE. Benefits include GAS CENTRAL HEATING, DOUBLE GLAZING & a REAR GARDEN. The property is close to bus stops for transport to the City Centre & UWE. Sorry no pets.

Holding Deposit £750.00





CARDIFF

VALE

CAERPHILLY

BRISTOL

[www.jeffreygross.co.uk](http://www.jeffreygross.co.uk)





Energy Efficiency Rating		Current	Potential
Very energy efficient - lower running costs			
(92 plus) A			
(81-91) B			84
(69-80) C			
(55-68) D		56	
(39-54) E			
(21-38) F			
(1-20) G			
Not energy efficient - higher running costs			
<b>England &amp; Wales</b>		EU Directive 2002/91/EC	