

www.jeffreygross.co.uk

CARDIFF

VALE

CAERPHILLY

BRISTOL



Filton Road

HORFIELD



Comments by Ms Olivia Melville-Brown



Property Specialist
Ms Olivia Melville-Brown
Branch manager

o.melvillebrown@thepropertyoutlet.com

Comments by the Homeowner





Filton Road

Horfield, Bristol, BS7 0PB

PCM

£1,695 PCM



3 Bedroom(s)



1 Bathroom(s)



947.23 sq ft



Contact our
Property Outlet Branch
0117 935 4565

* AVAILABLE NOW *

WELL PRESENTED UNFURNISHED THREE BEDROOM MAISONETTE! The Property Outlet are keen to offer to the rental market this fantastic maisonette. The accommodation comprises ENTRANCE HALL, LARGE LIVING ROOM, REFITTED KITCHEN WITH INTEGRATED APPLIANCES & a BATH/SHOWER ROOM & WC. To the first floor there are THREE BEDROOMS. WHITE GOODS INCLUDE WASHING MACHINE, FRIDGE/FREEZER & a GAS HOB/ELECTRIC OVEN. Other benefits include GAS CENTRAL HEATING, DOUBLE GLAZING and ROOF TERRACE. Situated close to MONKS PARK AVENUE, PUBLIC TRANSPORT & UWE. Suitable for STUDENTS/PROFESSIONALS or a FAMILY.

Holding Deposit £391.15



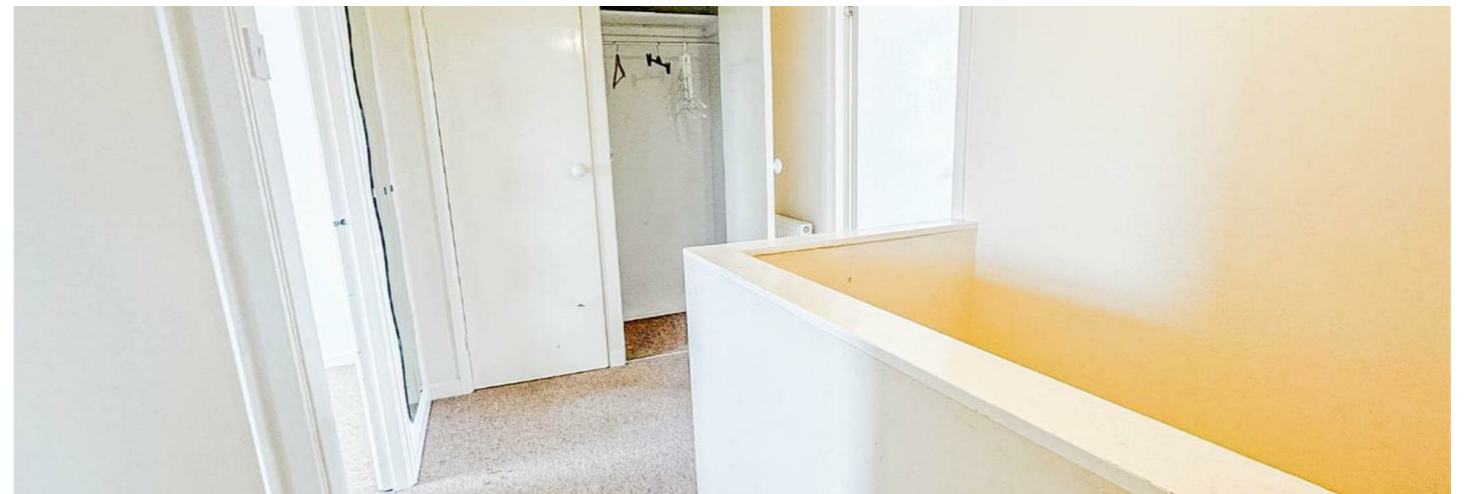
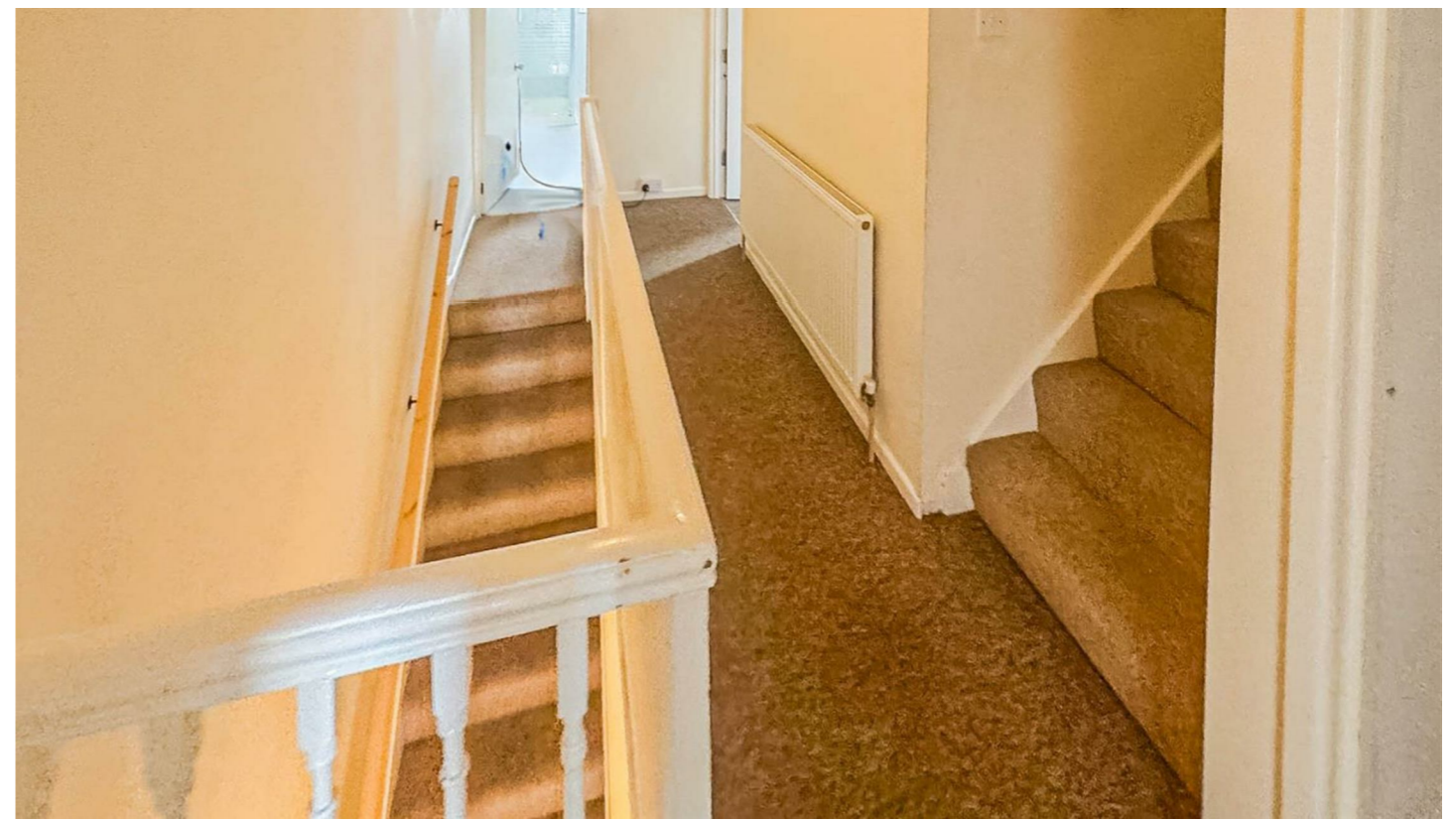
CARDIFF

VALE

CAERPHILLY

BRISTOL

www.jeffreygross.co.uk





Energy Efficiency Rating		
	Current	Potential
Very energy efficient - lower running costs		
(92 plus) A		
(81-91) B		
(69-80) C		77
(55-68) D	59	
(39-54) E		
(21-38) F		
(1-20) G		
Not energy efficient - higher running costs		
England & Wales		EU Directive 2002/91/EC

