



www.jeffreygross.co.uk

CARDIFF

VALE

CAERPHILLY

BRISTOL

Sandling Avenue



Comments by Miss Aaliyah McLoughlin

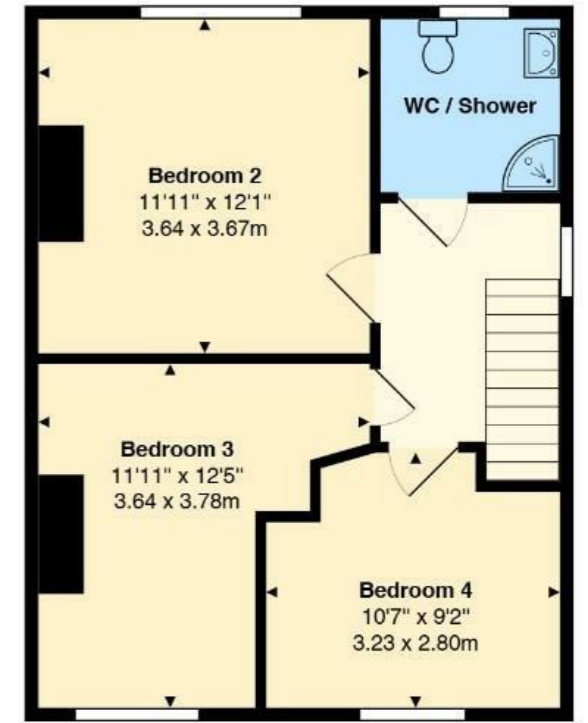


Property Specialist
Miss Aaliyah McLoughlin
Sales & Lettings Consultant

a.mcloughlin@thepropertyoutlet.co.uk



Comments by the Homeowner



Sandling Avenue, Horfield, Bristol, BS7 0HT

Total Area: 1055 ft² ... 98.0 m²

All measurements are approximate and for display purposes only



Sandling Avenue

, Bristol, BS7 0HT

PCM

£2,300 PCM



4 Bedroom(s)



1 Bathroom(s)



sq ft



Contact our
Property Outlet Branch

0117 935 4565

* AVAILABLE 21.07.2025 *

FURNISHED STUDENT HOME! The Property Outlet are delighted to offer to the rental market this FOUR BEDROOM HOME. The accommodation comprises REFITTED OPEN PLAN KITCHEN/LIVING AREA and BEDROOM 1, To the first floor there are THREE BEDROOMS and a REFITTED SHOWER & W/C .The Property is DOUBLE GLAZED THROUGHOUT with GAS CENTRAL HEATING. WHITE GOODS include ELECTRIC OVEN/GAS HOB, WASHING MACHINE and FRIDGE/FREEZER. There is a LARGE ENCLOSED GARDEN with PATIO AREA.WOULD SUIT STUDENTS AT UWE as there are LOCAL TRANSPORT CONNECTIONS to the campus, city centre. AIRBUS, SOUTHMEAD HOSPITAL & THE MOD. Sorry not Pets.

Holding Deposit £530.76





CARDIFF

VALE

CAERPHILLY

BRISTOL

www.jeffreygross.co.uk





Energy Efficiency Rating

	Current	Potential
Very energy efficient - lower running costs		
(92 plus) A		87
(81-91) B		
(69-80) C	71	
(55-68) D		
(39-54) E		
(21-38) F		
(1-20) G		
Not energy efficient - higher running costs		
England & Wales		EU Directive 2002/91/EC

