



www.jeffreygross.co.uk

Rudhall Grove

CARDIFF

VALE

CAERPHILLY

BRISTOL



Comments by Ms Olivia Melville-Brown



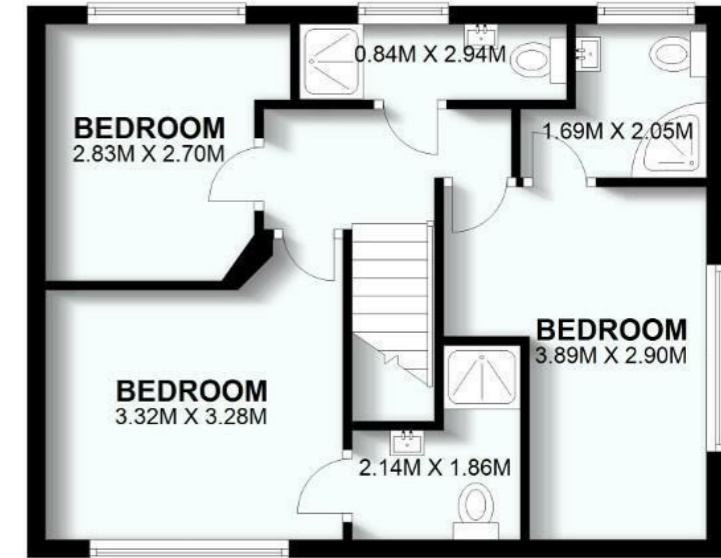
Property Specialist
Ms Olivia Melville-Brown
Branch manager

o.melvillebrown@thepropertyoutlet.com

GROUND FLOOR



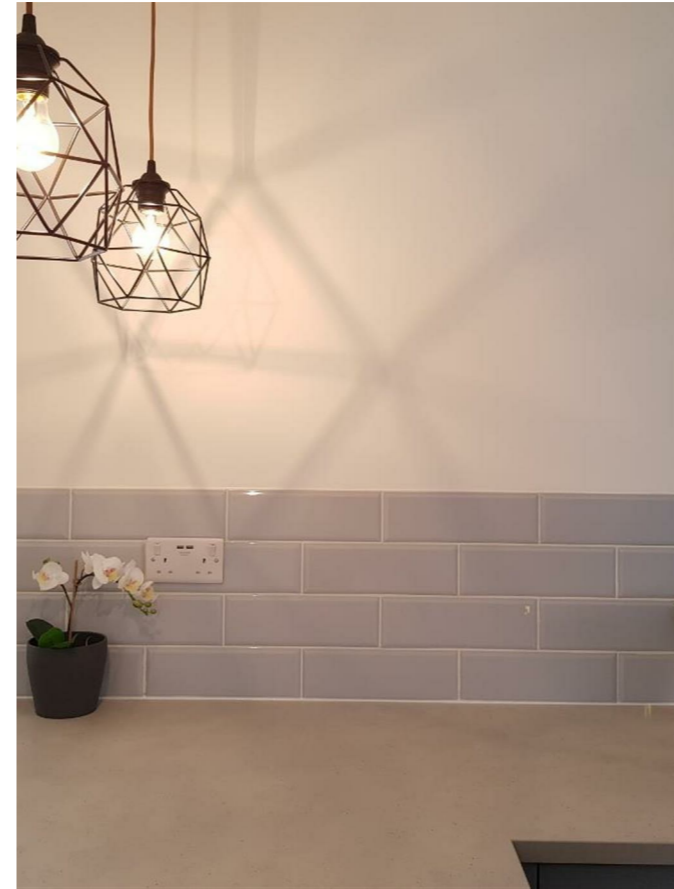
FIRST FLOOR



Whilst every attempt has been made to ensure accuracy of the floor plan, all measurements are approximate and no responsibility is taken for any error, omission or measurement
Plan produced using PlanUp.

Comments by the Homeowner





Rudhall Grove

, Bristol, BS10 5AJ

PCM

£2,650 PCM



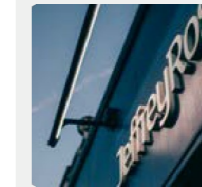
4 Bedroom(s)



4 Bathroom(s)



sq ft



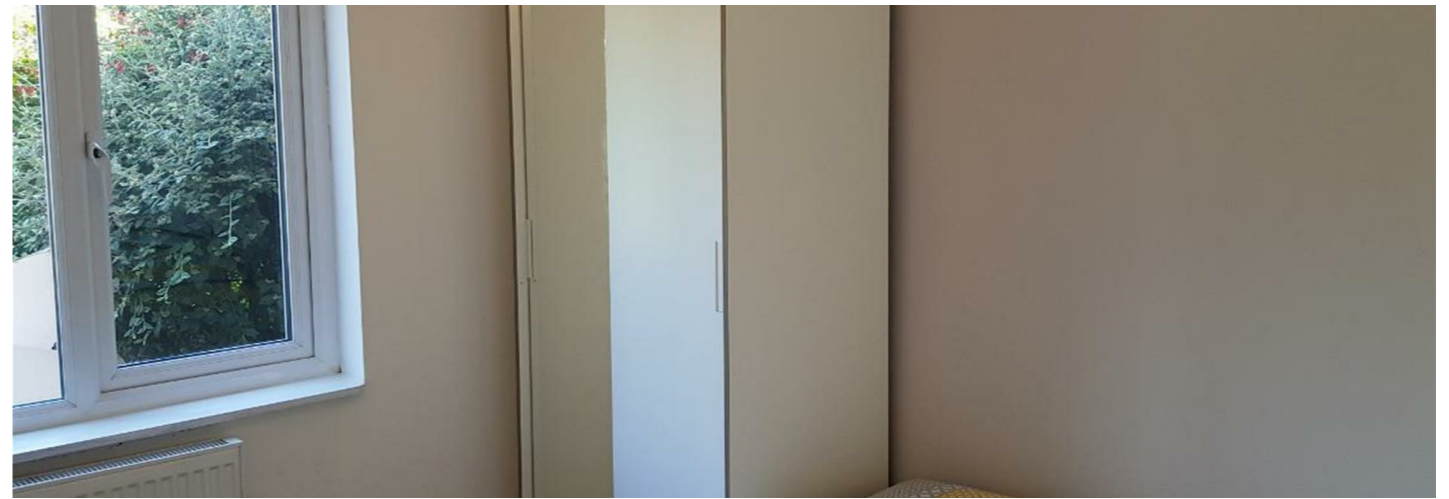
Contact our
Property Outlet Branch

0117 935 4565

* AVAILABLE 01.07.2026 *

WELL PRESENTED FOUR BEDROOM MODERN HOUSE. The Property Outlet and Jeffrey Ross are please to offer to the market this furnished four bedroom house with four bathrooms, located in the popular Horfield area close to Southmead hospital and just a short walk away from all the amenities of Gloucester Road.

The accommodation is arranged over two floors and consists of four bedrooms with queen size beds, all with ensuites, open plan living area with kitchen/diner with white goods included and access out to the rear garden. The property further benefits from an allocated parking space.



CARDIFF

VALE

CAERPHILLY

BRISTOL

www.jeffreygross.co.uk



