



www.jeffreygross.co.uk

St Mary Street

CARDIFF

VALE

CAERPHILLY

BRISTOL



Comments by Mr Ross Hooper-Nash



Property Specialist
Mr Ross Hooper-Nash
Director

ross@jeffreyross.co.uk

Comments by the Homeowner






St Mary Street

, Chepstow, NP16 5EW

PCM

£1,250 PCM

 null Bedroom(s)  null Bathroom(s)  1818.00 sq ft



Contact our
Property Outlet Branch

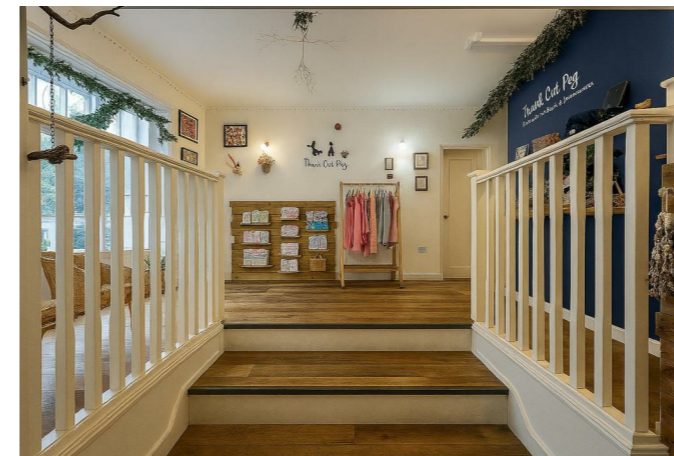
0117 935 4565

Split across the ground floor and basement, this unique and versatile space would suit a variety of business uses. Currently arranged as a pottery studio, workshop and café at lower ground level, with a retail frontage at entrance level from the high street, the property has also previously operated as a dental practice. The space measures approx. 1818 Sq Ft.

Access is directly from St Mary's Street into the split-level retail unit.

The basement provides a particularly characterful setting, believed to date back to the pre-Victorian era, featuring beautifully formed curved arches and a vaulted ceiling that create a distinctive, atmospheric studio environment.

EPC ordered





CARDIFF

VALE

CAERPHILLY

BRISTOL

www.jeffreygross.co.uk





Energy Efficiency Rating

| | Current | Potential |
|---|---------|-----------|
| Very energy efficient - lower running costs | | |
| (92 plus) A | | |
| (81-91) B | | |
| (69-80) C | | |
| (55-68) D | | |
| (39-54) E | | |
| (21-38) F | | |
| (1-20) G | | |
| Not energy efficient - higher running costs | | |

England & Wales EU Directive 2002/91/EC 

