

www.knights.uk.com

CARDIFF

VALE

CAERPHILLY

BRISTOL





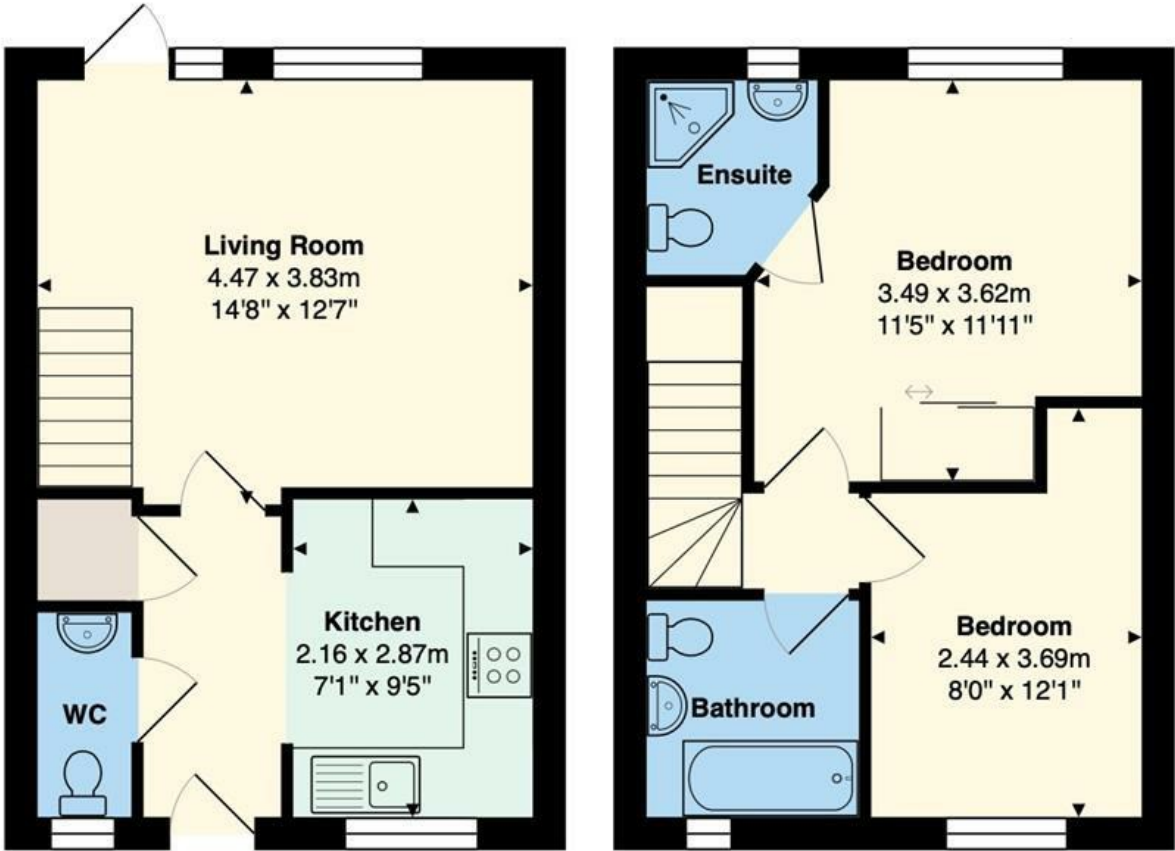
Comments by Miss Georgia Farr



Property Specialist
Miss Georgia Farr
Sales Negotiator

georgia@knights.uk.com

White Farm, Barry, CF62 9EW



Total Area: 59.6 m² ... 641 ft²
All measurements are approximate and for display purposes only

Comments by the Homeowner





White Farm

North Barry, Barry, CF62 9EW

Price Range

£230,000



2 Bedroom(s)



2 Bathroom(s)



645.84 sq ft



Contact our
Knights Barry Branch

01446 700222

Located in the charming area of White Farm, Barry, this delightful end-terrace house presents an excellent opportunity for both first-time buyers and those seeking a cosy retreat. Spanning a comfortable 646 square feet, the property boasts two well-proportioned bedrooms, making it ideal for small families or couples.

The inviting reception room offers a warm and welcoming space, perfect for relaxation or entertaining guests. The house features a conveniently located bathroom, ensuring practicality for everyday living.

One of the standout features of this property is the ample parking space available for two vehicles, a rare find in many urban settings. This added convenience enhances the appeal of the home, allowing for easy access and peace of mind.

With no onward chain, this property is ready for you to move in without delay, making it an attractive option for those eager to settle into their new home swiftly.

In summary, this end-terrace house in White Farm is a wonderful blend of comfort, convenience, and potential. Whether you are looking to invest or find your perfect home, this property is certainly worth considering.



HALLWAY 3'10" (1.17m)

LIVING ROOM 14'08" x 12'07" (4.47m x 3.84m)

KITCHEN 7'01" x 9'05" (2.16m x 2.87m)

W/C 3'0" x 6'01" (0.91m x 1.85m)

BEDROOM ONE 11'05" x 11'11" (3.48m x 3.63m)

ENSUITE 5'03" x 4'11" (1.60m x 1.50m)

BEDROOM TWO 8'0" x 12'1" (2.44m x 3.68m)

BATHROOM 6'02 x 6'04" (1.88m x 1.93m)





Energy Efficiency Rating		
	Current	Potential
Very energy efficient - lower running costs		
(92 plus) A		
(81-91) B		
(69-80) C		
(55-68) D		
(39-54) E		
(21-38) F		
(1-20) G		
Not energy efficient - higher running costs		
England & Wales		EU Directive 2002/91/EC

