

www.knights.uk.com

CARDIFF

VALE

CAERPHILLY

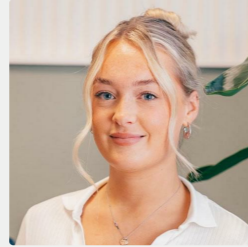
BRISTOL



Forest View



Comments by Miss Georgia Farr



Property Specialist
Miss Georgia Farr
 Sales Negotiator

georgia@jeffreycrossandknights.co.uk

Fforest View, Barry, CF62 6LW



Total Area: 133.2 m² ... 1434 ft²

All measurements are approximate and for display purposes only

Comments by the Homeowner





Fforest View

, Barry, CF62 6LW

Guide Price

£450,000



4 Bedroom(s)



2 Bathroom(s)



1434.00 sq ft



Contact our
Knights Barry Branch

01446 700222

Located on the highly sought-after Fforest View within the popular Woodlands Rise development in Barry, this impressive four-bedroom detached home offers spacious and beautifully presented accommodation throughout.

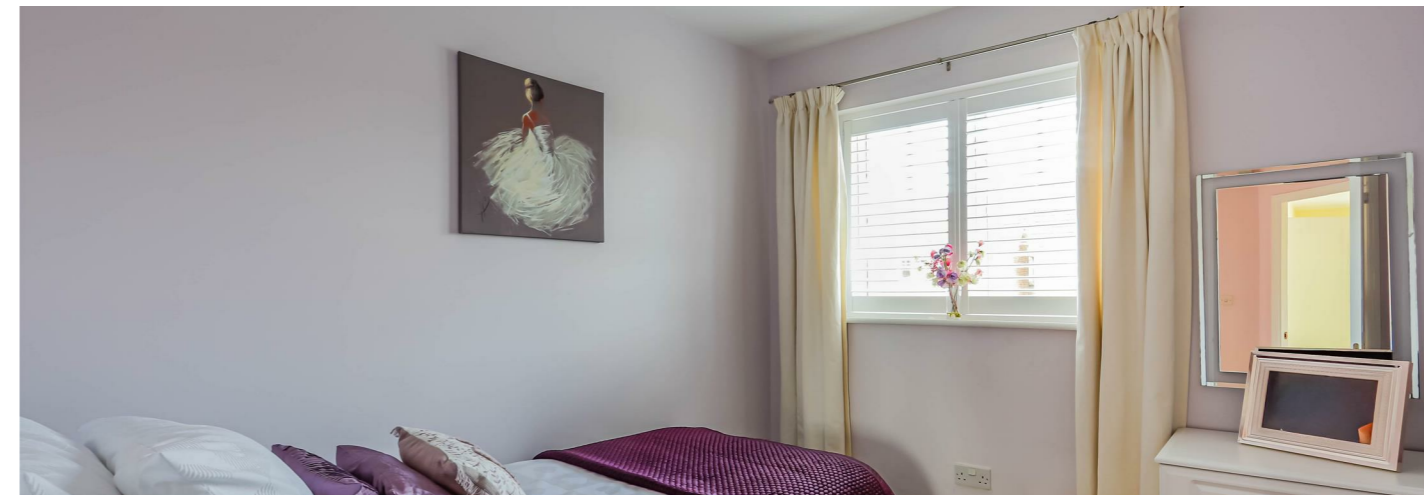
The property features two generous reception rooms and a larger-than-average conservatory, providing versatile living space ideal for modern family life and entertaining. Upstairs, there are four well-proportioned bedrooms and two well-appointed bathrooms, offering comfort and convenience for growing families.

Externally, the home benefits from a beautifully maintained rear garden, perfect for relaxing or entertaining, along with a private driveway and off-road parking for multiple vehicles.

Situated within the catchment area for highly regarded local schools and close to a range of amenities, this superb family home combines space, style and practicality in a desirable location.

Early viewing is highly recommended.





GARAGE 8'03" x 16'08" (2.51m x 5.08m)

HALLWAY 3'11" (1.19m)

LIVING ROOM 10'11" x 14'08" / 16'09"
(3.33m x 4.47m / 5.11m)

DINING ROOM 7'09" x 10'10" (2.36m x
3.30m)

CONSERVATORY 9'03" / 11'06" x 18'05"
(2.82m / 3.51m x 5.61m)

KITCHEN 11'0" x 6'07" (3.35m x 2.01m)

UTILITY ROOM 5'02" x 5'09" (1.57m x 1.75m
)

WC 2'07" x 5'01" (0.79m x 1.55m)

HALLWAY 6'0" (1.83m)

BEDROOM ONE 11'0" x 13'01" (3.35m x
3.99m)

EN-SUITE 3'04" / 6'02" x 6'06" (1.02m /
1.88m x 1.98m)

BEDROOM TWO 8'07" x 12'08" (2.62m x
3.86m)

BEDROOM THREE 7'08" x 9'0" (2.34m x
2.74m)

BEDROOM FOUR 7'08" x 9'0" (2.34m x
2.74m)

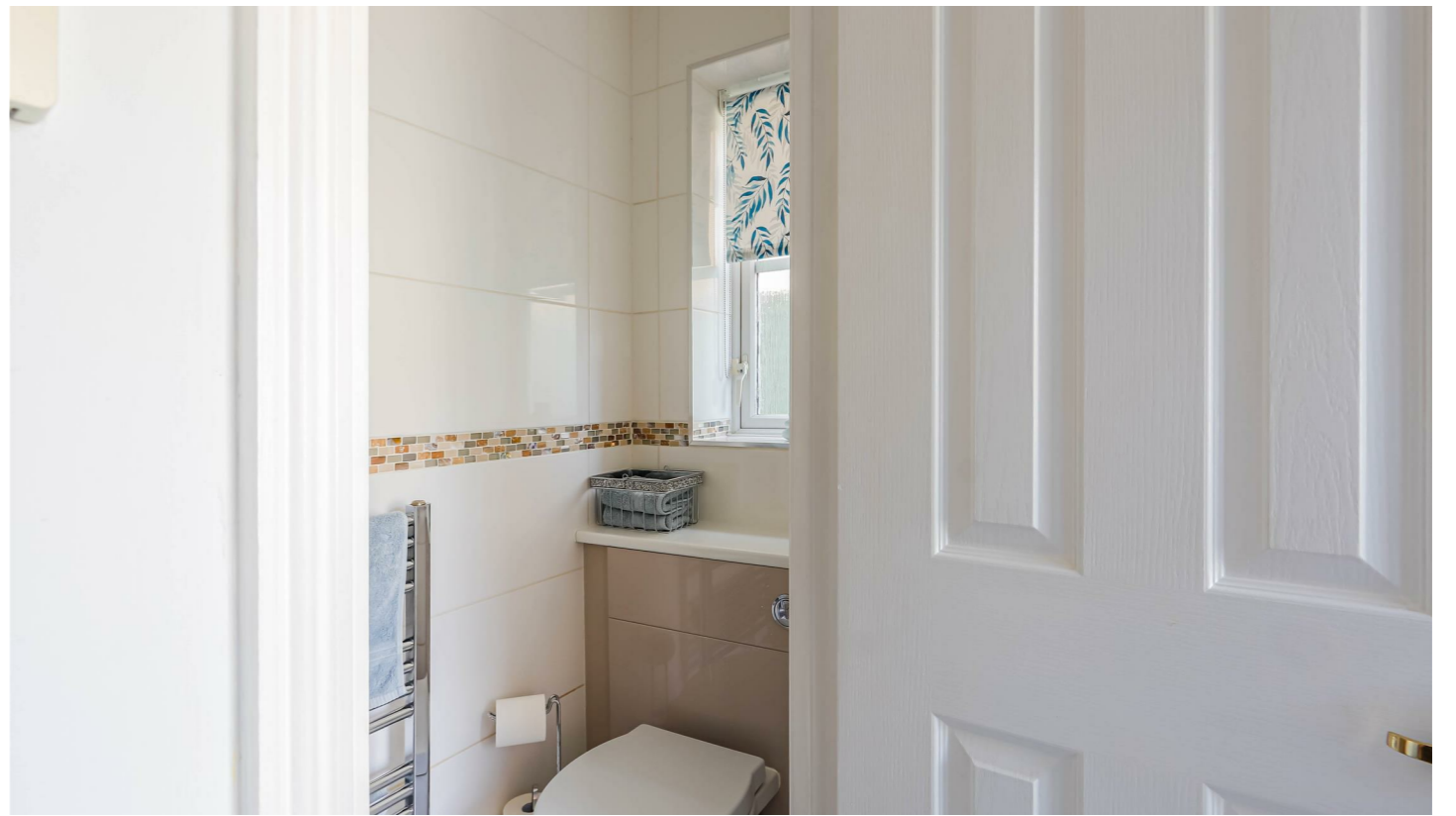
BATHROOM 6'05" x 6'07" (1.96m x 2.01m)

CARDIFF

VALE

CAERPHILLY

BRISTOL





Energy Efficiency Rating		Current	Potential
Very energy efficient - lower running costs			
(92 plus)	A		
(81-91)	B		
(69-80)	C		
(55-68)	D		
(39-54)	E		
(21-38)	F		
(1-20)	G		
Not energy efficient - higher running costs			
England & Wales		EU Directive 2002/91/EC 	

