



www.knights.uk.com

CARDIFF

VALE

CAERPHILLY

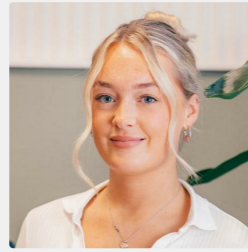
BRISTOL

North Walk

CENTRAL



Comments by Miss Georgia Farr



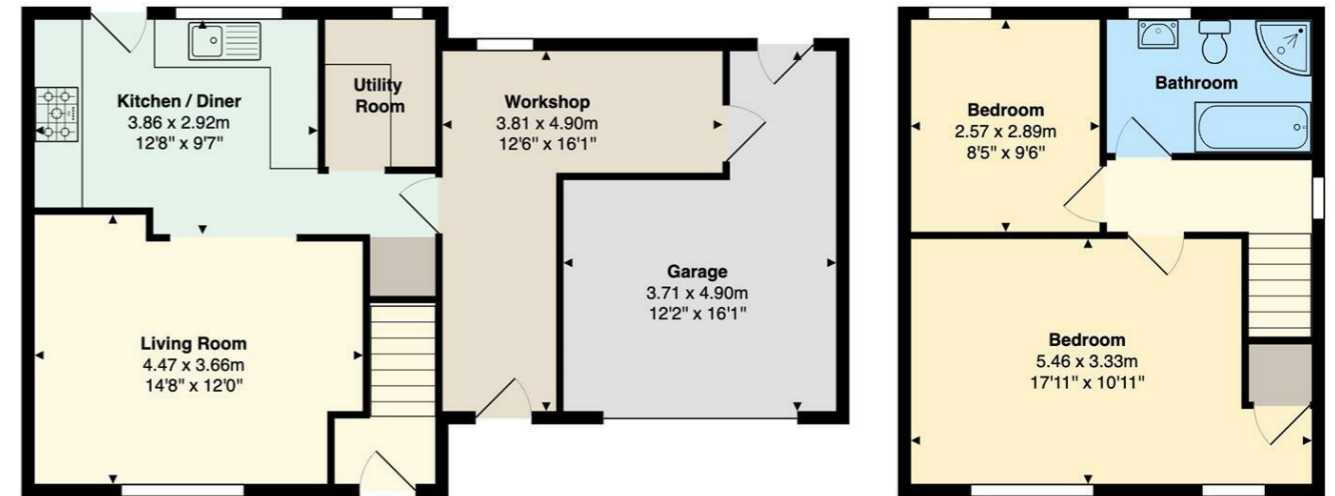
Property Specialist

Miss Georgia Farr

Sales Negotiator

georgia@jeffreycrossandknights.co.uk

North Walk, Barry



Total Area: 95.7 m² ... 1030 ft²

All measurements are approximate and for display purposes only

Comments by the Homeowner





North Walk

Central, Barry, CF62 8BX

Guide Price

£260,000



2 Bedroom(s)



1 Bathroom(s)



sq ft



Contact our
Knights Barry Branch

01446 700222

Situated in the highly sought-after North Walk area of Barry, this beautifully presented home offers a wonderful blend of comfort, style, and future potential.

The property features two spacious reception rooms, providing versatile living and entertaining space, alongside two well-proportioned bedrooms and a contemporary family bathroom. Having been tastefully renovated and redecorated throughout, the home is ready for immediate occupation and enjoys a fresh, modern feel.

Occupying an impressive plot, the property benefits from a generous rear garden that enjoys plenty of sunshine and a high degree of privacy, with no overlooking neighbours. For those looking to expand, previous plans and planning consent for a substantial double extension were approved and may be suitable for resubmission, offering exciting scope to enhance the property further.

Additional benefits include off-road parking for multiple vehicles, a garage, and the advantage of being offered to the market with no onward chain.

An early viewing is strongly recommended to fully appreciate the space, privacy, and potential this charming home has to offer. A fantastic opportunity to acquire a move-in-ready home in one of Barry's most desirable residential locations.



HALLWAY 2'11" / 4'06" (0.89m / 1.37m)

LIVING ROOM 10'10" / 12'0" x 14'08"
(3.30m / 3.66m x 4.47m)

KITCHEN / DINER 12'08" x 9'07" (3.86m x
2.92m)

LOBBY 2'07" (0.79m)

UTILITY ROOM 6'08" x 4'08" (2.03m x 1.42m
)

STORAGE 2'09" (0.84m)

GARAGE 5'01" / 12'06" x 16'01" / 5'05"
(1.55m / 3.81m x 4.90m / 1.65m)

WORKSHOP 12'02" / 4'09" x 9'11" / 16'01"
(3.71m / 1.45m x 3.02m / 4.90m)

HALLWAY 2'07" (0.79m)

BEDROOM ONE 10'11" x 14'09" (3.33m x
4.50m)

BEDROOM TWO 8'05" x 9'08" (2.57m x
2.95m)

BATHROOM

CARDIFF

VALE

CAERPHILLY

BRISTOL

