



www.knights.uk.com

CARDIFF

VALE

CAERPHILLY

BRISTOL



St. Marys Avenue



Set in a popular and well-established area, this home benefits from a strong sense of community and easy access to local shops, schools, and amenities. Nearby parks and good transport links add to its appeal, while the spacious and versatile layout, including two reception rooms, two bathrooms, and a useful basement, makes it a practical choice for modern living.

Comments by Miss Georgia Farr



Property Specialist

Miss Georgia Farr

Sales Negotiator

georgia@jeffreycrossandknights.co.uk

St Mary's Avenue, Barry, CF63 4LR

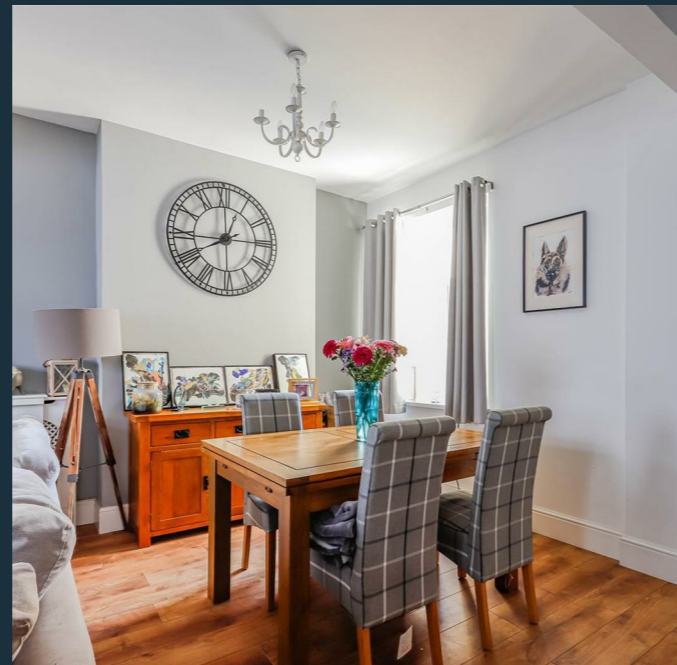


Total Area: 132.5 m² ... 1426 ft²

All measurements are approximate and for display purposes only

It's been a great place to call home, with a real sense of community and everything you need close by. The space has worked really well day to day, with plenty of room to relax and host when needed. Having local parks, shops, and good transport links nearby has made life here both easy and enjoyable.

Comments by the Homeowner



St. Marys Avenue

, Barry, CF63 4LR

Price Range

£240,000



3 Bedroom(s)



2 Bathroom(s)



1377.78 sq ft



Contact our
Knights Barry Branch

01446 700222

Welcome to this charming house located on St. Marys Avenue in the delightful town of Barry. This property offers a perfect blend of comfort and practicality, making it an ideal family home.

As you enter, you are greeted by two spacious reception rooms, providing ample space for both relaxation and entertaining guests. These versatile areas can be tailored to suit your lifestyle, whether you envision a cosy sitting room or a vibrant dining space.

The house boasts three well-proportioned bedrooms, ensuring that there is plenty of room for family members or guests. Each bedroom is designed to be a peaceful retreat, offering a comfortable atmosphere for rest and relaxation.

With two bathrooms, morning routines will be a breeze, allowing for convenience and privacy for all occupants.

Additionally, the property features a basement, providing extra storage space that is always a welcome asset in any home. This area can be utilised for storing seasonal items, sports equipment, or even transformed into a hobby space, depending on your needs.

Situated in a friendly neighbourhood, this house is close to local amenities, schools, and parks, making it a fantastic choice for families or anyone looking to enjoy the vibrant community of Barry.

In summary, this property on St. Marys Avenue presents an excellent opportunity for those seeking a spacious and versatile home in a desirable location. Do not miss the chance to make this lovely house your new home.





PORCH 3'01" x 3'0" (0.94m x 0.91m)

EN-SUITE 3'09" x 9'03" (1.14m x 2.82m)

LIVING/DINING ROOM 15'05" x 22'06" /
24'02" (4.70m x 6.86m / 7.37m)

KITCHEN 11'10" x 8'11" (3.61m x 2.72m)

UTILITY ROOM 4'01" x 10'03" (1.24m x
3.12m)

BEDROOM ONE 10'0" x 14'07" (3.05m x
4.45m)

BEDROOM TWO 9'07" x 11'0" (2.92m x
3.35m)

BATHROOM 12'04" x 8'09" (3.76m x 2.67m)

RECEPTION ROOM 14'07" x 10'02" (4.45m x
3.10m)

OFFICE 9'06" / 12'0" x 14'04" (2.90m /
3.66m x 4.37m)

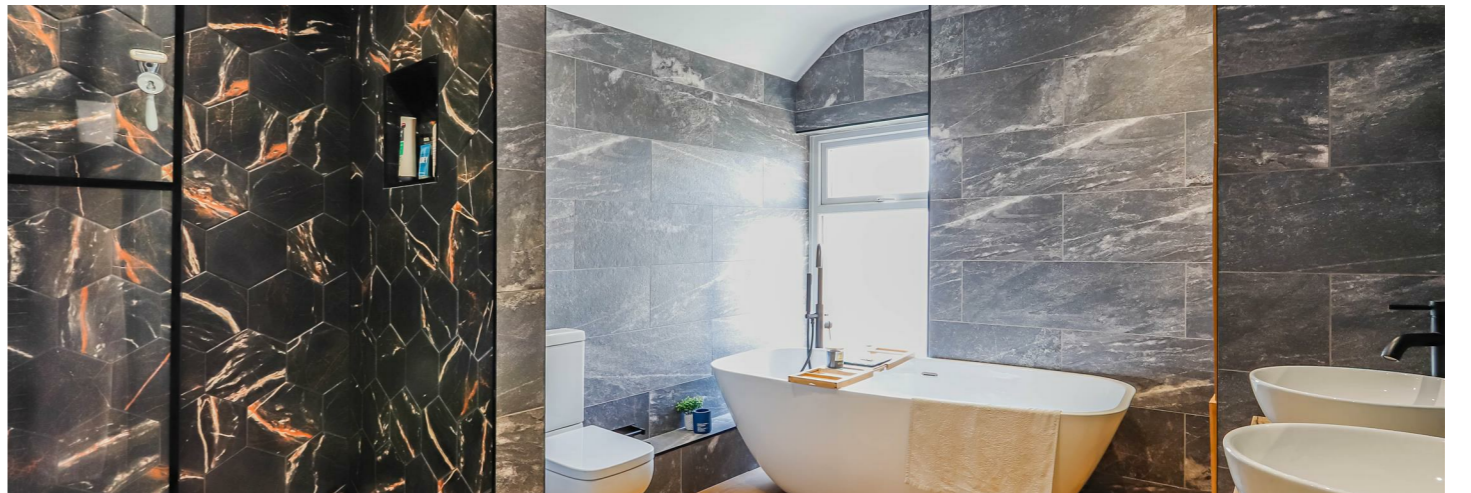
BEDROOM 12'06" x 9'04" (3.81m x 2.84m)

CARDIFF

VALE

CAERPHILLY

BRISTOL





Energy Efficiency Rating		Current	Potential
Very energy efficient - lower running costs			
(92 plus) A			
(81-91) B			
(69-80) C		73	79
(55-68) D			
(39-54) E			
(21-38) F			
(1-20) G			
Not energy efficient - higher running costs			
England & Wales		EU Directive 2002/91/EC	

