

www.knights.uk.com

CARDIFF

VALE

CAERPHILLY

BRISTOL



Heathfield Drive



The property benefits from a spacious ground floor and well-maintained outdoor green areas, providing both practicality and charm.

Comments by Miss Georgia Farr



Property Specialist
Miss Georgia Farr
Sales Negotiator

georgia@knights.uk.com

Heathfield Drive, Barry



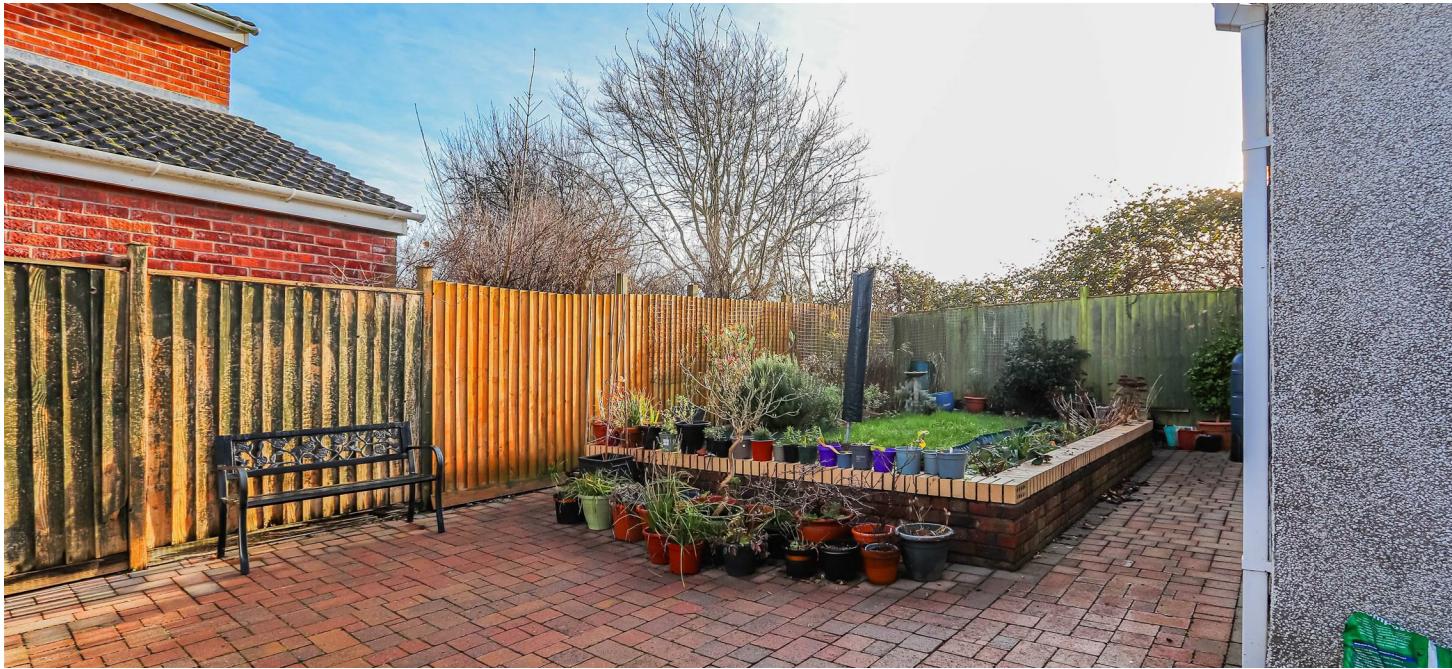
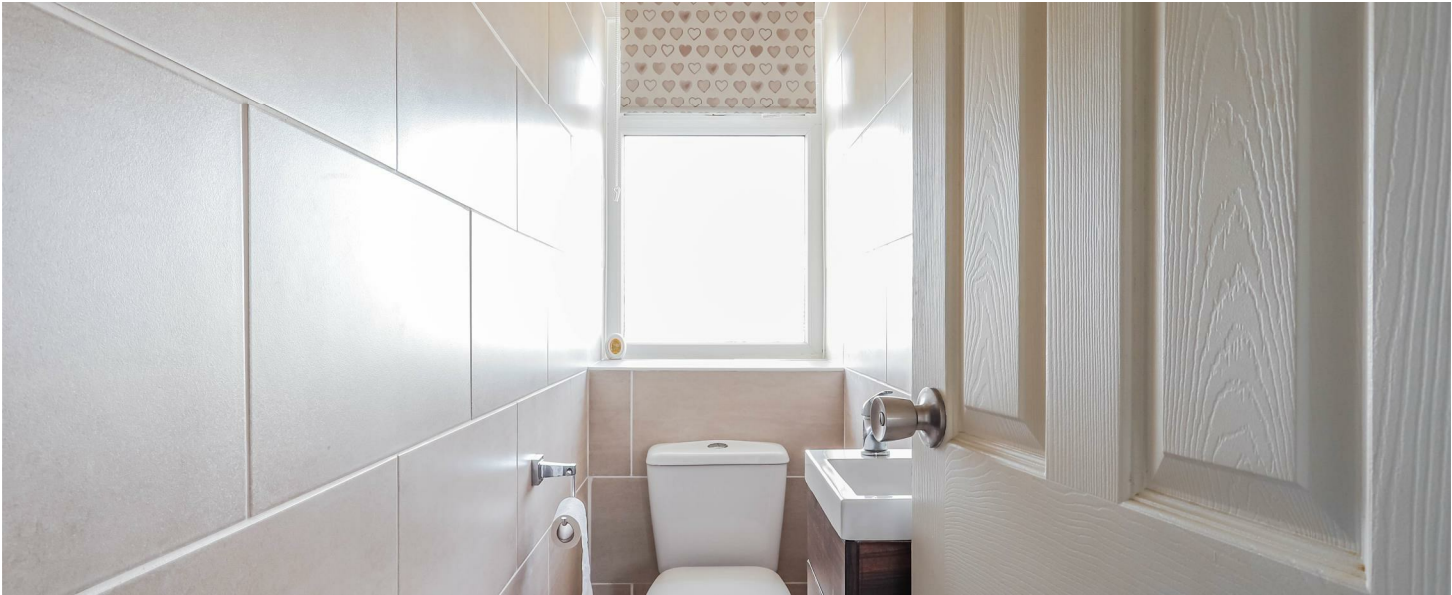
Total Area: 124.9 m² ... 1345 ft²

All measurements are approximate and for display purposes only

We have loved living here. It's a lovely, quiet location, and the house offers so much space. We would love for another family to enjoy this home as much as we have. Now that our children are all grown up and have flown the nest, we are looking to downsize.

Comments by the Homeowner





Heathfield Drive

, Barry, CF62 9UG

Offers Over

£300,000



4 Bedroom(s)



1 Bathroom(s)



1345.49 sq ft



Contact our
Knights Barry Branch
01446 700222

Situated in the charming area of Heathfield Drive, Barry, this delightful end-terrace house offers a perfect blend of space and comfort. With a generous 1,345 square feet of living area, this property is ideal for families or those seeking ample room to entertain.

The house boasts five well-proportioned reception rooms, providing versatile spaces that can be tailored to your lifestyle. Whether you envision a cosy family lounge, a formal dining area, or a vibrant playroom, the possibilities are endless. The four bedrooms are thoughtfully designed to ensure restful nights and personal retreats for all family members.

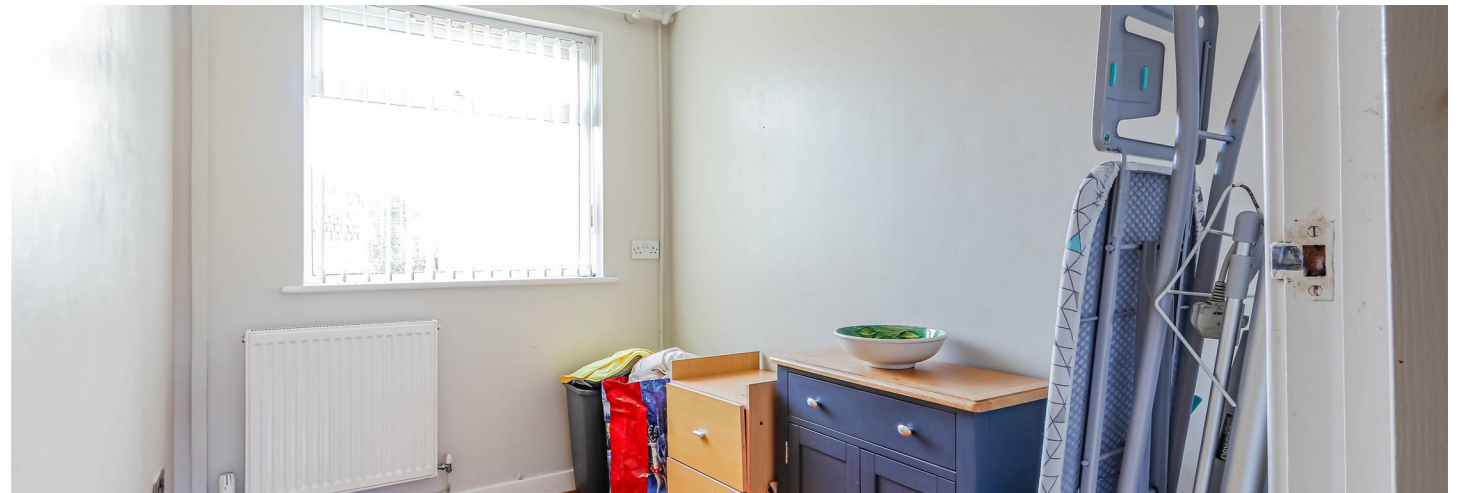
The property features a well-appointed bathroom, catering to the needs of a busy household. The layout of the home promotes a sense of flow and connectivity, making it easy to enjoy both quiet moments and lively gatherings.

Situated in a friendly neighbourhood, this home is conveniently located near local amenities, schools, and parks, making it an excellent choice for families. The end-terrace position offers added privacy and a sense of space, with potential for outdoor enjoyment.

This property presents a wonderful opportunity to create lasting memories in a welcoming environment. If you are looking for a spacious family home in Barry, this end-terrace house on Heathfield Drive is certainly worth considering.



PORCH 6'03" x 3'06" (1.91m x 1.07m)	BEDROOM TWO 11'01" x 8'0" (3.38m x 2.44m)
HALLWAY 3'02" (0.97m)	BEDROOM THREE 8'11" x 10'02" (2.72m x 3.10m)
WC 2'06" x 5'02" (0.76m x 1.57m)	BEDROOM FOUR 8'10" x 7'08" (2.69m x 2.34m)
LIVING ROOM 10'10" x 14'03" (3.30m x 4.34m)	WC 2'04" x 7'08" (0.71m x 2.34m)
BATHROOM 5'01" x 7'04" (1.55m x 2.24m)	
KITCHEN 8'09" x 10'01" (2.67m x 3.07m)	
DINING ROOM 10'10" x 10' (3.30m x 3.05m)	
LOUNGE 9'09" x 14'00" (2.97m x 4.27m)	
RECEPTION ROOM 13'01" x 9'01" (3.99m x 2.77m)	
STUDY 6'02" x 8'09" (1.88m x 2.67m)	
BEDROOM ONE 13'04" x 10'10" (4.06m x 3.30m)	





Energy Efficiency Rating		
	Current	Potential
Very energy efficient - lower running costs		
(92 plus) A		
(81-91) B		
(69-80) C		
(55-68) D		
(39-54) E		
(21-38) F		
(1-20) G		
Not energy efficient - higher running costs		
England & Wales	EU Directive 2002/91/EC	

