



www.knights.uk.com

CARDIFF

VALE

CAERPHILLY

BRISTOL



Canon Street



It's not often that a property renovated to this standard comes to market. With plenty of space both inside and out, it's well suited to family living and entertaining. The main bedroom is a real highlight, with far-reaching views over the sea and surrounding area.

Comments by Miss Georgia Farr



Property Specialist

Miss Georgia Farr

Sales Negotiator

georgia@jeffreycrossandknights.co.uk

Canon Street, Barry, CF62 7RH

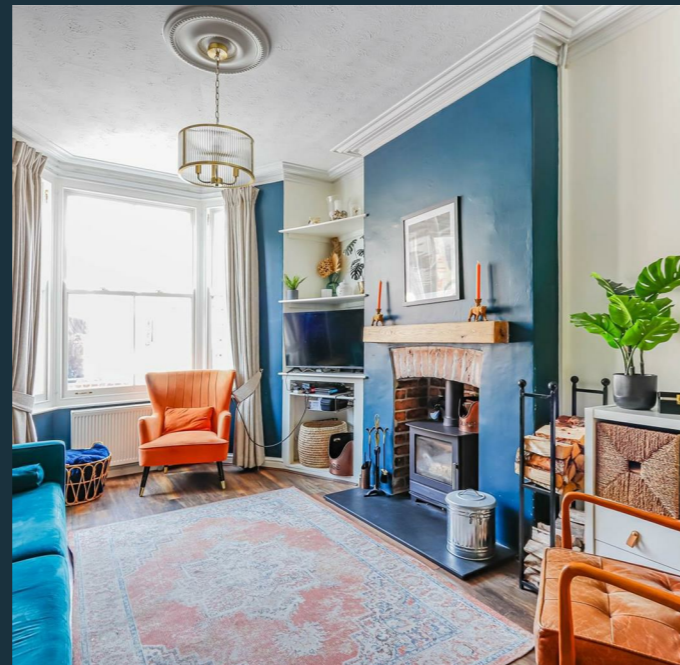


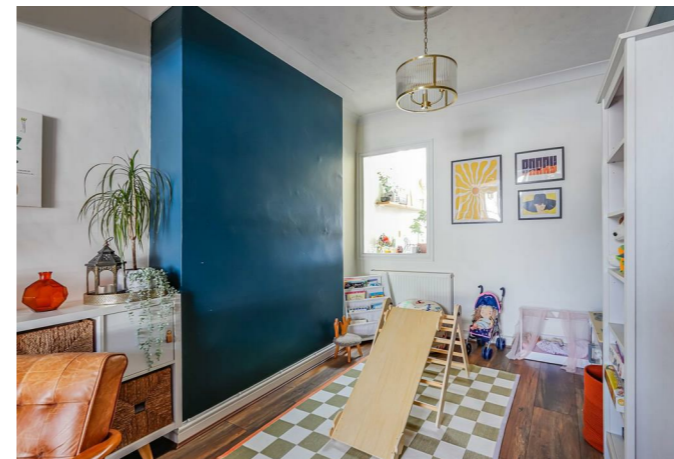
Total Area: 136.9 m² ... 1473 ft²

All measurements are approximate and for display purposes only

We loved transforming this property into what we thought would be our forever home so much that we're ready to do it all over again. Every aspect of the renovation was carefully designed to suit our active, sociable family, and we've poured our hearts into creating a space that truly works for modern family life. The location is equally exceptional, with excellent schools, local shops, transport links, and beautiful beaches all within easy reach.

Comments by the Homeowner





Canon Street

, Barry, CF62 7RH

Guide Price

£400,000



4 Bedroom(s)



2 Bathroom(s)



1473.00 sq ft



Contact our
Knights Barry Branch

01446 700222

Situated in the sought-after area of Canon Street, Barry, this exceptional mid-terrace home beautifully combines character, style, and contemporary family living. Extending to approximately 1,473 sq ft, the property has been thoughtfully renovated throughout, offering spacious and versatile accommodation across four bedrooms.

At the heart of the home lies a stunning open-plan living, kitchen and dining space, enhanced by side and rear extensions to create a superb family hub. Designed for modern living, this expansive room provides the perfect setting for both everyday life and entertaining, with an abundance of natural light and a seamless flow throughout.

Bifold doors open directly onto the level, sun-filled rear garden, effortlessly blending indoor and outdoor living and creating an ideal space for relaxing, dining, and entertaining family and friends.

Another standout feature is the impressive dormer loft conversion, which enjoys breathtaking sea views from a Juliette balcony and benefits from a stylish en-suite shower room, creating a wonderful principal suite or guest retreat.

Immaculately presented and ready to move straight into, this remarkable home successfully marries its original period charm with high-quality modern finishes. Offering generous living space, stunning sea views, and excellent entertaining areas, this is a rare opportunity to acquire a truly special home in one of Barry's most desirable locations.



PORCH 3'09" x 2'07" (1.14m x 0.79m)

HALLWAY 3'0" (0.91m)

HALLWAY 3'09" / 5'04" (1.14m / 1.63m)

MASTER BEDROOM 10'11" / 9'01" x 17'04" (3.33m / 2.77m x 5.28m)

LIVING ROOM 10'10" x 10'09" (3.30m x 3.28m)

EN-SUITE 4'09" x 5'09" / 8'04" (1.45m x 1.75m / 2.54m)

PLAY ROOM 9'02" x 11'10" (2.79m x 3.61m)

OPEN PLAN KITCHEN / DINER / LIVING 20'04" x 14'03" (6.20m x 4.34m)

HALLWAY 5'02" / 3'04" (1.57m / 1.02m)

BEDROOM ONE 10'11" x 14'11" (3.33m x 4.55m)

BEDROOM TWO 9'03" x 10'11" (2.82m x 3.33m)

BEDROOM THREE 6'09" x 11'05" (2.06m x 3.48m)

BATHROOM 9'08" x 7'09" (2.95m x 2.36m)

CARDIFF

VALE

CAERPHILLY

BRISTOL





Energy Efficiency Rating		Current	Potential
Very energy efficient - lower running costs			
(92 plus) A			
(81-91) B			
(69-80) C		76	80
(55-68) D			
(39-54) E			
(21-38) F			
(1-20) G			
Not energy efficient - higher running costs			
England & Wales		EU Directive 2002/91/EC	

