



www.knights.uk.com

CARDIFF

VALE

CAERPHILLY

BRISTOL

Maes-T-Cwm Street



This beautifully renovated mid-terrace home perfectly combines contemporary style with traditional charm. Boasting two spacious reception rooms, the property offers versatile living space ideal for both relaxing evenings and entertaining guests.

Recently refurbished throughout, the home has been thoughtfully updated to create a bright, modern, and welcoming atmosphere, ready for immediate enjoyment.

Comments by Mrs Cassie Deans - Shumack



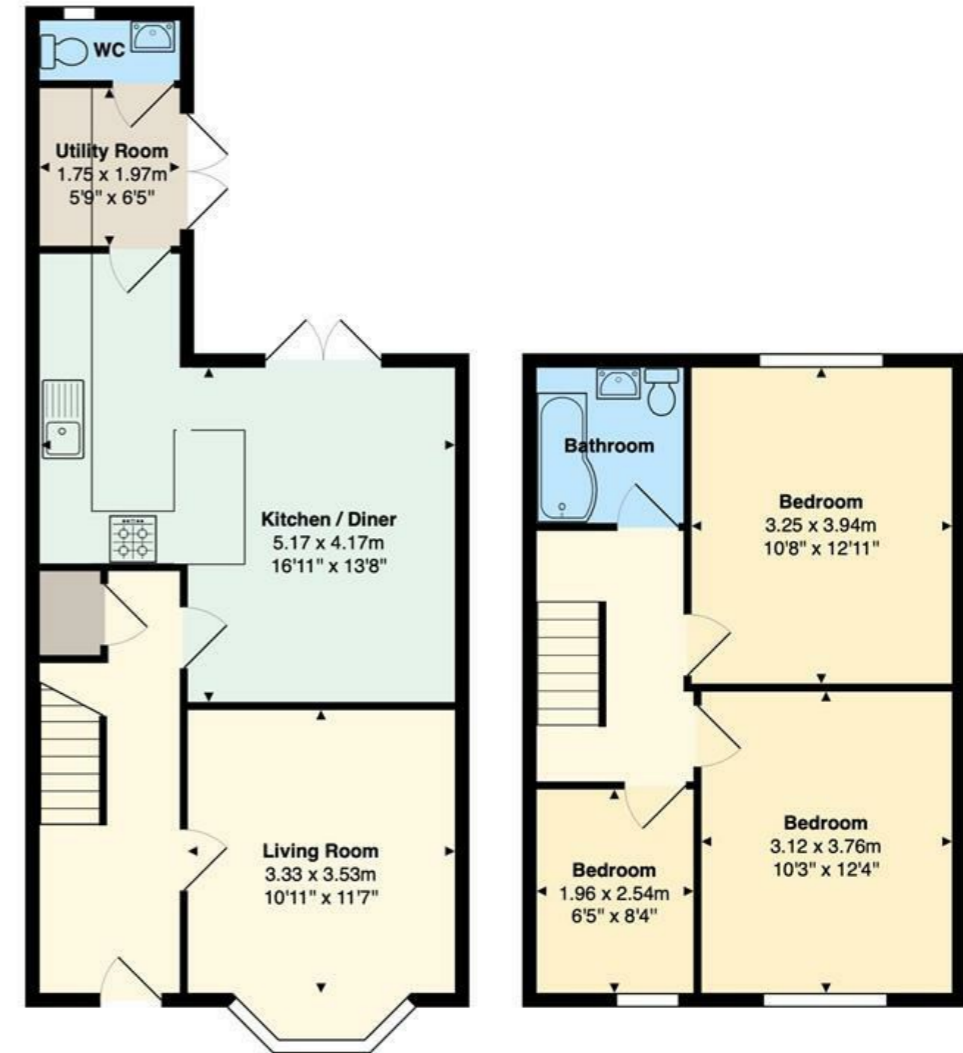
Property Specialist
Mrs Cassie Deans - Shumack
 Senior valuer
 cassie@jeffreygrossandknights.co.uk

It's been incredibly convenient living so close to local amenities, with shops, cafés, parks, and schools all within easy reach. The area offers not only everyday convenience but also a strong sense of community, it has been a great home.

Comments by the Homeowner

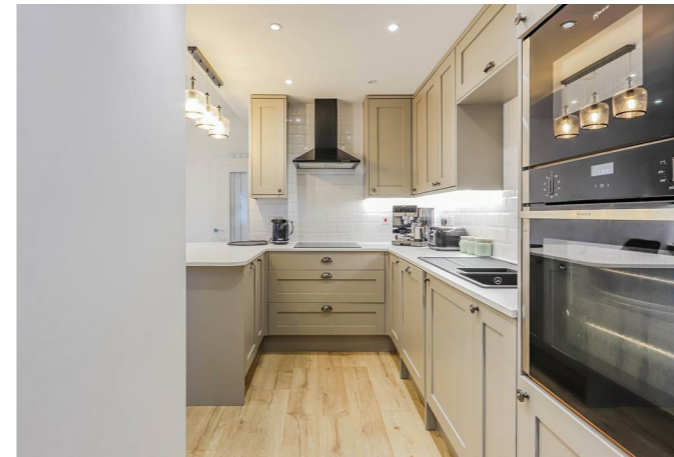


Maes-y-cwm Street, Barry, CF63 4EH



Total Area: 89.4 m² ... 962 ft²

All measurements are approximate and for display purposes only



Maes-Y-Cwm Street

, Barry, CF63 4EH

Offers Over

£250,000



3 Bedroom(s)



2 Bathroom(s)



893.00 sq ft



Contact our
Knights Barry Branch

01446 700222

This beautifully renovated mid-terrace house offers a perfect blend of modern living and traditional comfort. The two reception rooms provide ample opportunity for relaxation and entertainment, making it easy to host gatherings or enjoy quiet evenings at home.

The recent renovations have enhanced the property, creating a fresh and inviting atmosphere throughout.

Situated close to local amenities, residents will find everything they need within easy reach, from shops and cafes to parks and schools. This prime location not only offers convenience but also a sense of community, making it an ideal place to call home.

In summary, this mid-terrace house on Maes-Y-Cwm Street is a delightful opportunity for anyone looking to settle in Barry. With modern finishes, and proximity to local conveniences, it is sure to appeal to a wide range of buyers. Do not miss the chance to make this lovely property your own.



HALLWAY 5'09" (1.75m)

LIVING ROOM 10'11" x 11'07" / 13'08"
(3.33m x 3.53m / 4.17m)

DINING ROOM 10'09" x 13'08" (3.28m x
4.17m)

KITCHEN 17'01" / 5'08" x 7'02" / 12'08"
(5.21m / 1.73m x 2.18m / 3.86m)

UTILITY ROOM 6'05" x 5'10" (1.96m x 1.78m
)

WC 2'05" x 6'05" (0.74m x 1.96m)

BEDROOM ONE 10'08" x 12'11" (3.25m x
3.94m)

BEDROOM TWO 11'08" x (3.56m x)

BEDROOM THREE 6'05" x 8'04" (1.96m x
2.54m)

BATHROOM 6'04" x 5'08" (1.93m x 1.73m)

CARDIFF

VALE

CAERPHILLY

BRISTOL





Energy Efficiency Rating

	Current	Potential
Very energy efficient - lower running costs		
(92 plus) A		
(81-91) B		
(69-80) C		
(55-68) D	68	75
(39-54) E		
(21-38) F		
(1-20) G		
Not energy efficient - higher running costs		
England & Wales	EU Directive 2002/91/EC 