



# CEITIRY CASTELL

BARRY

# CEITIRY CASTELL

WATERFRONT, CF63 4DG

OFFERS OVER

£130,000 -

LEASEHOLD



1 Bed



1 Bath



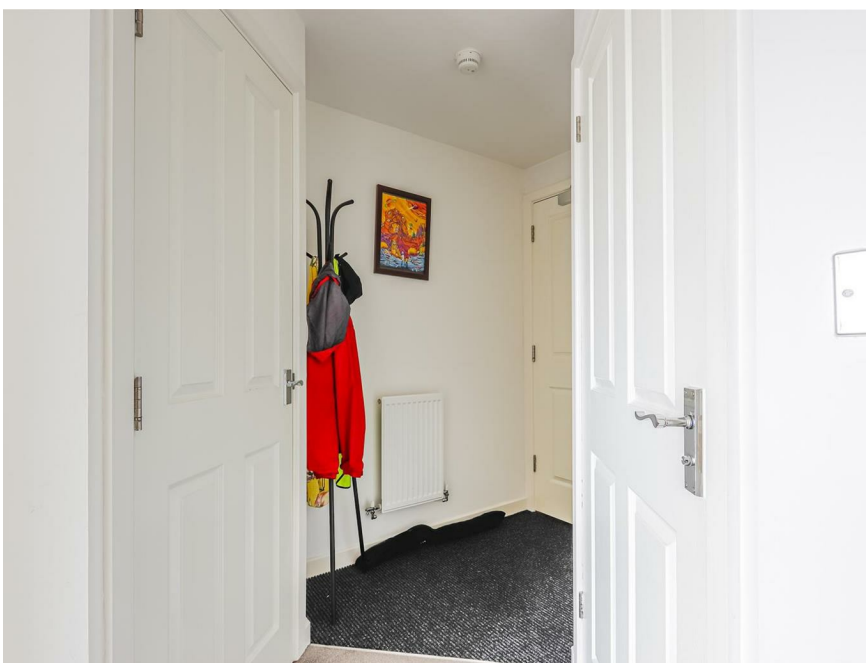
365.97 sq ft


Located in the heart of Barry's popular waterfront area, this well-maintained one-bedroom flat is a great option for first-time buyers or investors. The property features a spacious reception room, a modern bathroom, and a double bedroom, offering comfortable and practical living.

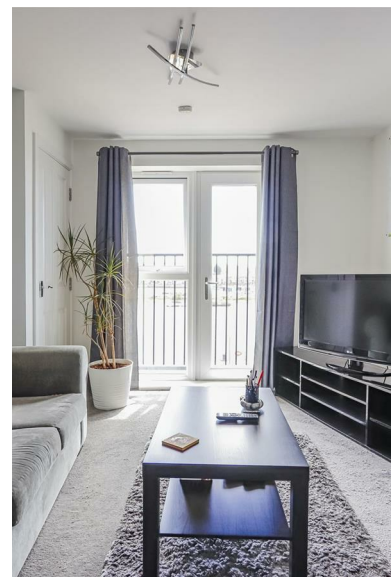
A key highlight is the impressive view over the docks, providing a peaceful outlook and a strong sense of place. Whether you're starting your day with a coffee or winding down in the evening, the waterfront setting adds real appeal.

The flat is conveniently situated close to local parks, shops, and public transport links, offering easy access to everything you need. It's also offered with no onward chain, helping to simplify the buying process.

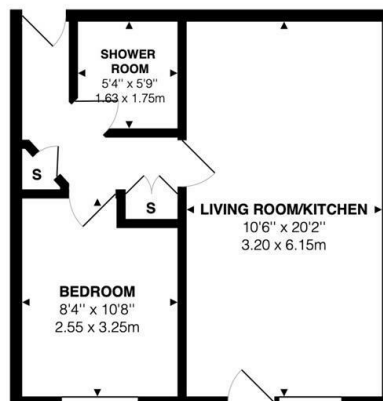
Combining location, convenience, and great views, this property is a solid choice for anyone looking to enter the market or expand a portfolio in one of Barry's most desirable areas.



Energy Efficiency Rating		
	Current	Potential
Very energy efficient - lower running costs		
(92 plus) <b>A</b>		
(81-91) <b>B</b>		
(69-80) <b>C</b>	<b>83</b>	<b>83</b>
(55-68) <b>D</b>		
(39-54) <b>E</b>		
(21-38) <b>F</b>		
(1-20) <b>G</b>		
Not energy efficient - higher running costs		
<b>England &amp; Wales</b>	EU Directive 2002/91/EC	



**Cei Tir Y Castell, Barry, CF63 4DG**



Total Area: 390 ft<sup>2</sup> ... 36.3 m<sup>2</sup>

All measurements are approximate and for display purposes only

BARRY & THE VALE'S HOME FOR

STYLISH SALES  
& LETTINGS



KNIGHTS