



www.knights.uk.com

CARDIFF

VALE

CAERPHILLY

BRISTOL



Greenlawns



Properties offering this amount of living space and outdoor space are becoming increasingly difficult to find. With three reception rooms, three bedrooms and a generous wrap-around garden, this home provides exceptional versatility for growing families. Combined with its sought-after location and vacant possession, it presents an exciting opportunity for buyers looking to create their ideal home.

Comments by Mrs Samantha Draisey



Property Specialist
Mrs Samantha Draisey
 Branch manager

samantha@jeffreycrossandknights.co.uk



This home has been in our family for many years and holds so many wonderful memories. It has been a place where generations have come together to celebrate special occasions and enjoy everyday family life. While it is sad to say goodbye, the time has come for a new chapter, and we hope the next owners will create just as many happy memories here as we have.

Comments by the Homeowner

Greenlawns, Barry



Total Area: 98.9 m² ... 1064 ft²

All measurements are approximate and for display purposes only



Greenlawns

, Barry, CF62 9DX

Guide Price

£260,000



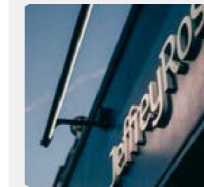
3 Bedroom(s)



1 Bathroom(s)



1064.00 sq ft



Contact our
Knights Barry Branch

01446 700222

Welcome to this charming end-terrace house located in the desirable area of Greenlawns, Barry. This delightful property boasts three spacious reception rooms, providing ample space for both relaxation and entertaining. The three well-proportioned bedrooms offer comfortable living for families or individuals seeking extra room for guests or a home office.

The house features a single extension to the rear, which enhances the living space and allows for a versatile layout that can be tailored to your needs. The property is currently vacant, making it an ideal opportunity for those looking to move in without delay.

One of the standout features of this home is the wrap-around garden, which offers a lovely outdoor space for gardening, play, or simply enjoying the fresh air. This garden is perfect for hosting summer barbecues or enjoying quiet evenings under the stars.

Situated in a friendly neighbourhood, this property is conveniently located near local amenities, schools, and transport links, making it an excellent choice for families and commuters alike. With its combination of space, potential, and outdoor charm, this end-terrace house in Greenlawns is a wonderful opportunity not to be missed.



HALLWAY 5'11" x 15'02" (1.80m x 4.62m)

LIVING ROOM 12'04" x 14'09" (3.76m x 4.50m)

KITCHEN 7'06" x 10'10" (2.29m x 3.30m)

DINER 7'05" x 7'07" (2.26m x 2.31m)

LOUNGE 18'07" x 11'09" (5.66m x 3.58m)

BEDROOM ONE 10'07" x 11'02" (3.23m x 3.40m)

BEDROOM TWO 9'01" x 9'09" / 10'07"
(2.77m x 2.97m / 3.23m)

BEDROOM THREE 7'07" x 7'09" (2.31m x 2.36m)

BATHROOM 8'07" x 5'04" (2.62m x 1.63m)

CARDIFF

VALE

CAERPHILLY

BRISTOL





Energy Efficiency Rating

	Current	Potential
Very energy efficient - lower running costs		
(92 plus) A		
(81-91) B		
(69-80) C		
(55-68) D		
(39-54) E		
(21-38) F		
(1-20) G		
Not energy efficient - higher running costs		
England & Wales	EU Directive 2002/91/EC 