



www.knights.uk.com

CARDIFF

VALE

CAERPHILLY

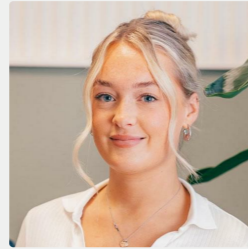
BRISTOL

Westward Rise

WEST END



Comments by Miss Georgia Farr



Property Specialist
Miss Georgia Farr
Sales Negotiator

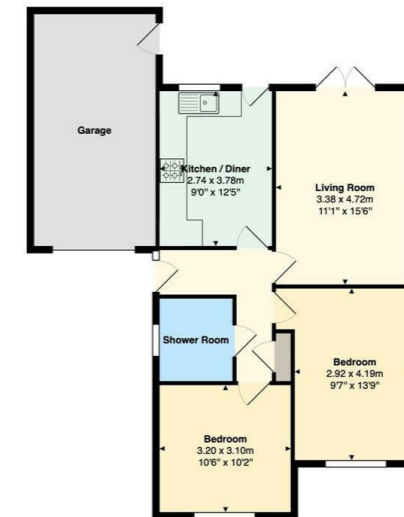
georgia@jeffreycrossandknights.co.uk



Comments by the Homeowner



Westward Rise, Barry, CF62 6NQ



Total Area: 77.3 m² ... 832 ft²
All measurements are approximate and for display purposes only



Energy Efficiency Rating		Current	Potential
Very energy efficient - lower running costs			
(92 plus) A			
(81-91) B			
(69-80) C		69	75
(55-68) D			
(39-54) E			
(21-38) F			
(1-20) G			
Not energy efficient - higher running costs			
England & Wales	EU Directive 2002/91/EC		



Westward Rise

West end, Barry, CF62 6NQ

£350,000

2 Bedroom(s) 1 Bathroom(s) 635.00 sq ft



Contact our
Knights Barry Branch

01446 700222

Situated in the highly desirable Westward Rise area of Barry, this beautifully maintained bungalow combines comfort, privacy, and convenience in an attractive residential area.

The property welcomes you with a spacious and inviting reception room, offering the perfect space for both relaxing and hosting. There are two generously sized double bedrooms, providing comfortable accommodation for homeowners and guests alike, while the well-appointed shower room is designed with practicality in mind.

Externally, the home continues to impress with ample off-road parking for multiple vehicles, complemented by a garage offering secure parking or valuable additional storage space.

To the rear, the low-maintenance garden provides a peaceful and private outdoor retreat, benefiting from a lack of overlooking neighbours and creating an ideal setting for relaxing, gardening, or entertaining family and friends.

Offered to the market with no onward chain, this delightful bungalow presents an excellent opportunity for those looking to move quickly. Whether you are downsizing, or searching for a tranquil home in a sought-after location, this charming property is sure to appeal.



HALLWAY 3'07" / 2'10" (1.09m / 0.86m)

LIVING ROOM 11'0" x 15'06" (3.35m x 4.72m)

KITCHEN 12'05" x 9'03" (3.78m x 2.82m)

BEDROOM ONE 9'07" x 13'09" (2.92m x 4.19m)

BEDROOM TWO 10'02" x 10'06" (3.10m x 3.20m)

BATHROOM 5'10" x 6'07" (1.78m x 2.01m)

GARAGE 9'09" x 18'07" (2.97m x 5.66m)



CARDIFF

VALE

CAERPHILLY

BRISTOL

www.knights.uk.com