



www.knights.uk.com

CARDIFF

VALE

CAERPHILLY

BRISTOL

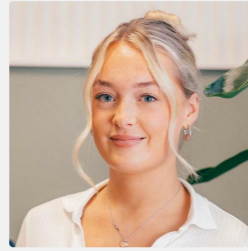


Phyllis Street

BARRY ISLAND



Comments by Miss Georgia Farr



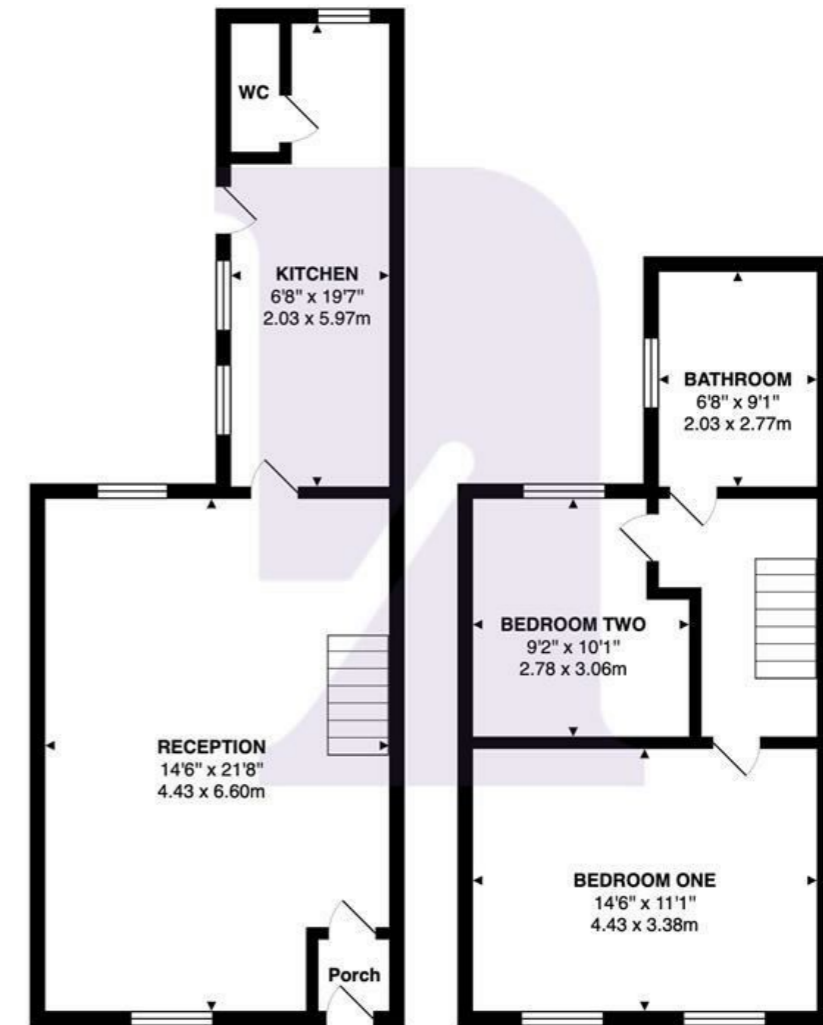
Property Specialist
Miss Georgia Farr
Sales Negotiator

georgia@jeffreycrossandknights.co.uk



Comments by the Homeowner

Phyllis Street, Barry, CF62 5UT



Total Area: 828 ft² ... 76.9 m²

All measurements are approximate and for display purposes only



Phyllis Street

Barry Island, Barry, CF62 5UT

Guide Price

£180,000



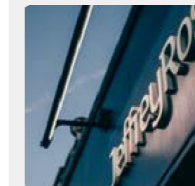
2 Bedroom(s)



2 Bathroom(s)



828.82 sq ft



Contact our

Knights Barry Branch

01446 700222

Situated in the charming area of Barry, specifically on Phyllis Street, this delightful house offers an exceptional opportunity for both families and individuals seeking a new home. The property is ideally situated near the renowned Barry Island, known for its beautiful beaches and vibrant atmosphere, making it a perfect spot for leisure and relaxation.

One of the standout features of this residence is its excellent transport links, ensuring easy access to nearby towns and cities. Whether you are commuting for work or exploring the local area, you will find that getting around is both convenient and efficient.

This property comes with the added benefit of no chain, allowing for a smooth and straightforward purchasing process. This is particularly advantageous for those eager to move in without unnecessary delays.

Families will appreciate the great school catchment areas surrounding the home, providing access to quality education for children of all ages. Additionally, the proximity to local shops means that everyday amenities are just a short stroll away, enhancing the overall convenience of this location.

In summary, this house on Phyllis Street presents a wonderful opportunity to enjoy the best of Barry living, with its prime location, excellent transport links, and access to schools and shops. It is a property that truly deserves your attention.



RECEPTION 14'06 x 21'10 (4.42m x 6.65m)

PORCH 3'02 x 3'07 (0.97m x 1.09m)

KITCHEN 6'08 x 19'08 (2.03m x 5.99m)

WC 5'05 x 2'0 (1.65m x 0.61m)

BEDROOM ONE 14'06 x 11'01 (4.42m x 3.38m)

BEDROOM TWO 9'01 / 7'02 x 10'02 (2.77m / 2.18m x 3.10m)

BATHROOM 8'11 x 6'09 (2.72m x 2.06m)

CARDIFF

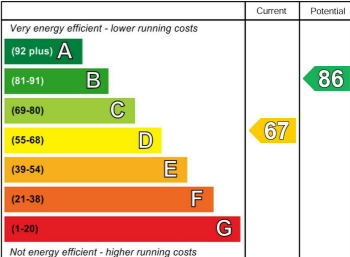
VALE

CAERPHILLY

BRISTOL



Energy Efficiency Rating



England & Wales EU Directive 2002/91/EC