

[www.jeffreygross.co.uk](http://www.jeffreygross.co.uk)

CARDIFF

VALE

CAERPHILLY

BRISTOL







*“From its welcoming Edwardian character to its unbeatable Barry Island location, this is a home that’s easy to settle into and even easier to love.”*

Comments by Miss Georgia Farr




**Property Specialist**

**Miss Georgia Farr**

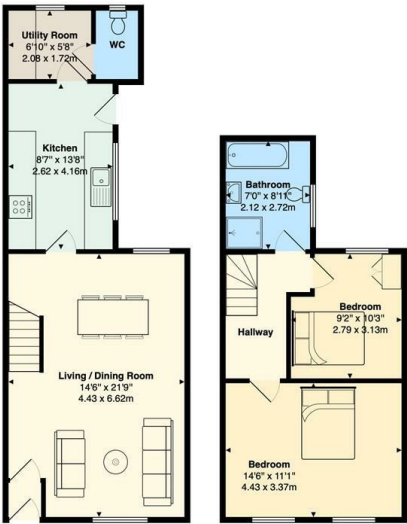
Sales Negotiator

[georgia@knights.uk.com](mailto:georgia@knights.uk.com)



Comments by the Homeowner

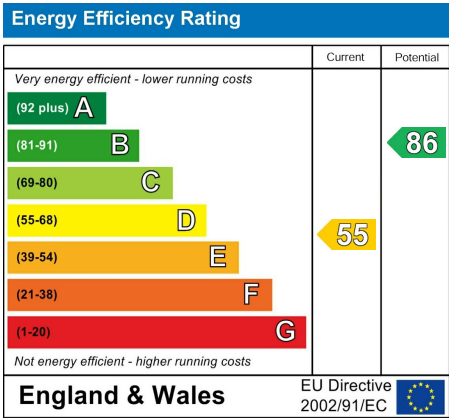
Phyllis Street, Barry, CF62 5UT



Total Area: 881 ft² ... 81.8 m²  
All measurements are approximate and for display purposes only



- LIVING ROOM 21'9 x 14'6 (6.63m x 4.42m)
- KITCHEN 13'8 x 8'7 (4.17m x 2.62m)
- UTILITY ROOM 6'10 x 5'8 (2.08m x 1.73m)
- BEDROOM ONE 14'6 x 11'1 (4.42m x 3.38m)
- BEDROOM TWO 10'3 x 9'2 (3.12m x 2.79m)
- BATHROOM 8'11 x 7'0 (2.72m x 2.13m)



# Phyllis Street

, Barry, CF62 5UT

Guide Price

£180,000

2 Bedroom(s)

1 Bathroom(s)

850.00 sq ft

Contact our

***Knights Barry Branch***

01446 700222

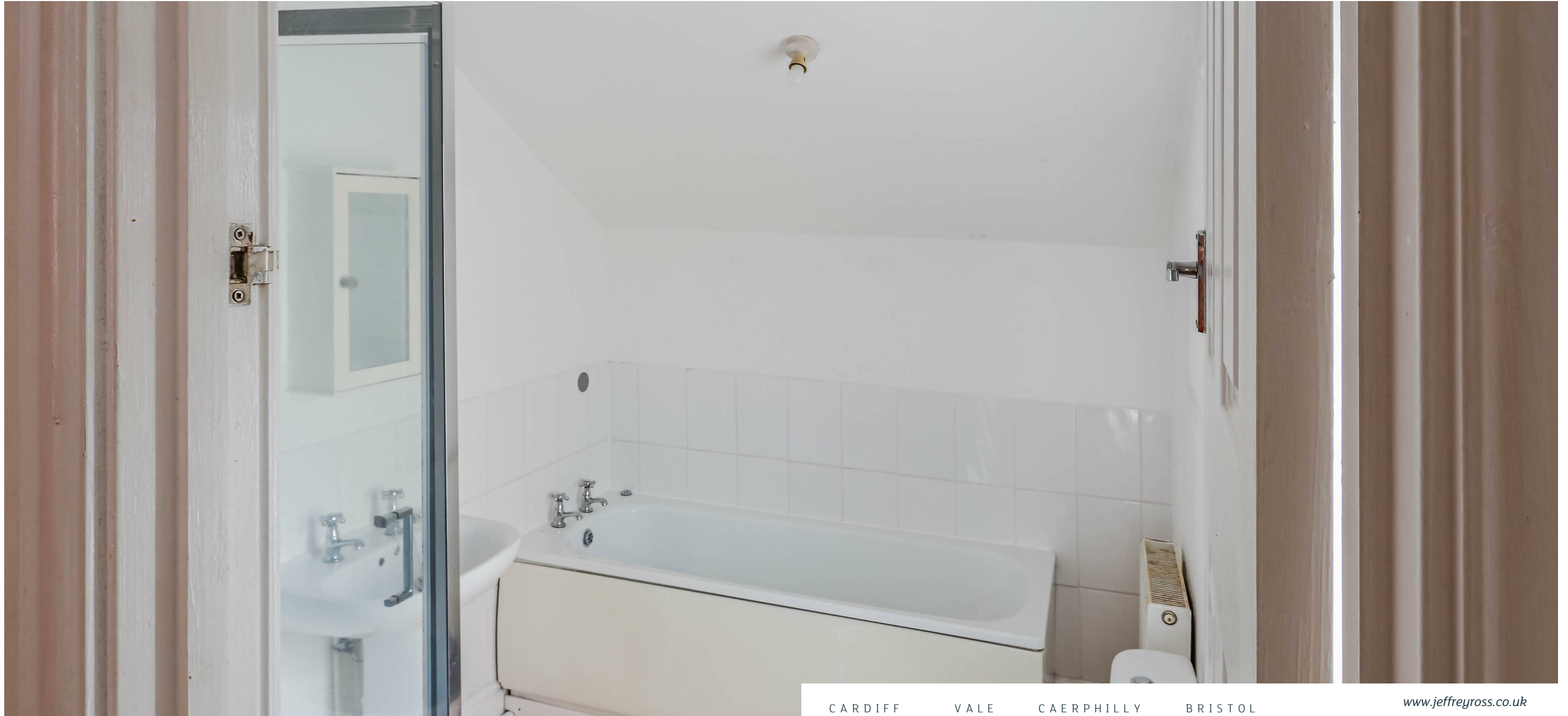
Situated on the well-loved Phyllis Street on Barry Island, this charming Edwardian terraced home offers a fantastic opportunity for first-time buyers. The property features two well sized bedrooms, providing comfortable spaces for rest and relaxation, along with a convenient upstairs bathroom to streamline daily routines.

Maintained throughout, the house benefits from a recently installed boiler, ensuring reliable warmth during the colder months. Its condition means you can move straight in, with the freedom to add your own personal touches over time. The property is also offered with no chain, making the buying process even smoother.

The location is a major highlight. Phyllis Street is known for its character and community feel, and the home sits close to local schools, making it ideal for families. A range of nearby shops caters to everyday needs, while Barry Island’s stunning beaches are just a short walk away—perfect for leisurely strolls, relaxation, or family days out.

In summary, this Edwardian terrace on Phyllis Street combines comfort, convenience, and the potential for personalisation. With no chain and a sought-after Barry Island location, it’s a wonderful opportunity for anyone ready to take their first step onto the property ladder.





CARDIFF

VALE

CAERPHILLY

BRISTOL

[www.jeffreygross.co.uk](http://www.jeffreygross.co.uk)