



ABINGDON STREET

BARRY

ABINGDON STREET

EAST END, CF63 2HQ

OFFERS OVER

£190,000 -

LEASEHOLD



2 Bed



1 Bath

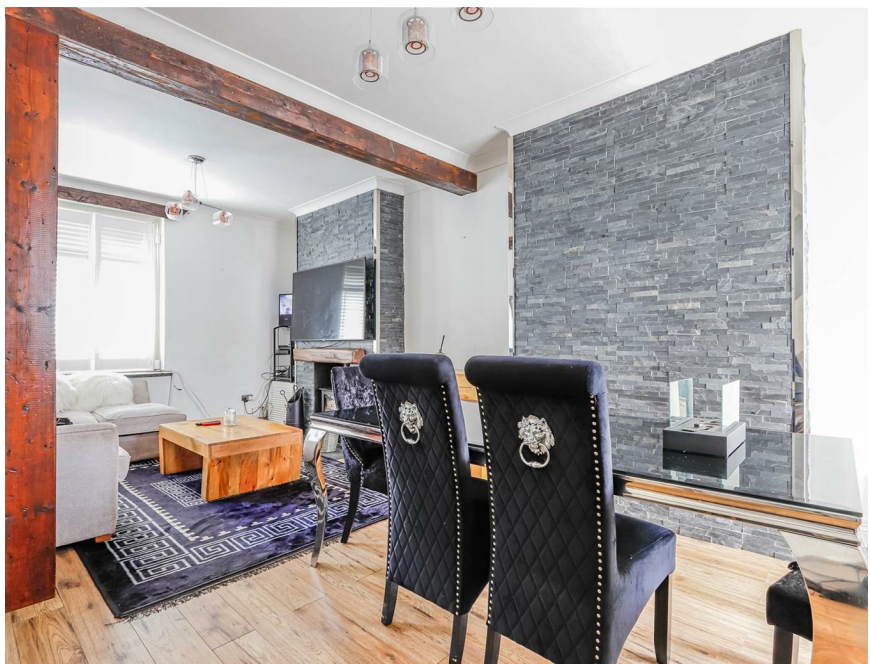


1022.57 sq ft

Located in Abingdon Street, Barry, this delightful terraced house offers a perfect blend of comfort and convenience. Spanning an impressive 1,023 square feet, the property features a well-proportioned reception room, ideal for relaxing or entertaining guests.

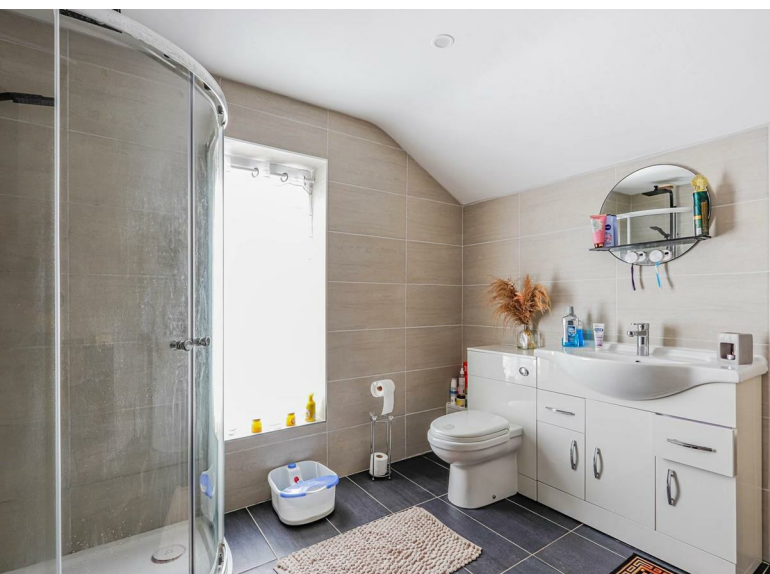
The house includes two inviting bedrooms, providing plenty of space for a small family or professionals looking for a peaceful retreat. The bathroom is thoughtfully designed, combining functionality with comfort for everyday living.

Set within a vibrant community, local shops, schools, and transport links are just a short walk away, making this an ideal choice for anyone seeking both convenience and a friendly neighbourhood. Whether you're a first-time buyer or an investor, this terraced house on Abingdon Street is a fantastic opportunity to create a home that suits your lifestyle. Don't miss the chance to view this charming property in a desirable location.

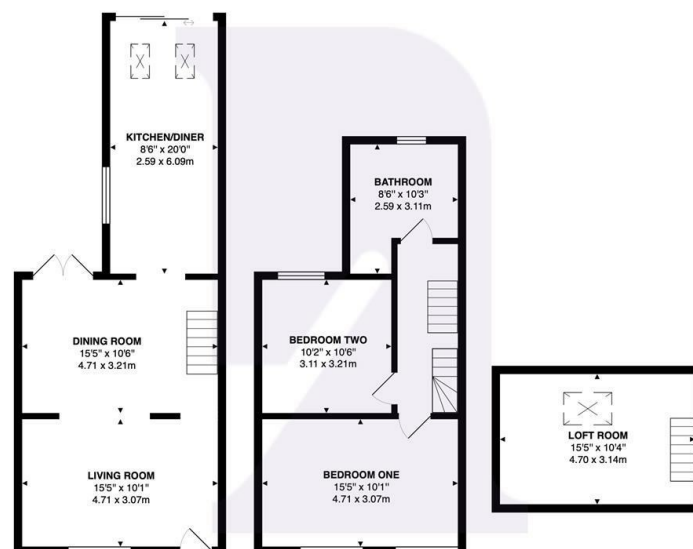




Energy Efficiency Rating		
	Current	Potential
Very energy efficient - lower running costs		
(92 plus) A		
(81-91) B		86
(69-80) C	69	
(55-68) D		
(39-54) E		
(21-38) F		
(1-20) G		
Not energy efficient - higher running costs		
England & Wales		EU Directive 2002/91/EC



Abingdon Street, Barry, CF63 2HQ



Total Area: 1076 ft² ... 99.9 m²
All measurements are approximate and for display purposes only

BARRY & THE VALE'S HOME FOR

STYLISH SALES
& LETTINGS



KNIGHTS