



[www.knights.uk.com](http://www.knights.uk.com)

*Pontypridd Street*

CARDIFF

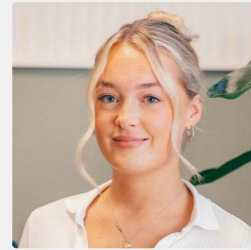
VALE

CAERPHILLY

BRISTOL



Comments by Miss Georgia Farr



**Property Specialist**  
**Miss Georgia Farr**  
Sales Negotiator

[georgia@jeffreycrossandknights.co.uk](mailto:georgia@jeffreycrossandknights.co.uk)

**Pontypridd Street, Barry, CF63 2HH**



**Total Area: 84.6 m<sup>2</sup> ... 911 ft<sup>2</sup>**

All measurements are approximate and for display purposes only

Comments by the Homeowner





# Pontypridd Street

, Barry, CF63 2HH

Guide Price

£230,000



3 Bedroom(s)



1 Bathroom(s)



861.11 sq ft



Contact our  
**Knights Barry Branch**

01446 700222

Situated on Pontypridd Street in Barry, this beautifully presented three-bedroom home has been thoughtfully updated to offer stylish, modern living while retaining a warm and welcoming feel.

The property features a reconfigured layout that maximises both space and functionality, with two spacious reception rooms providing flexible living and entertaining areas. At the heart of the home is a contemporary fitted kitchen, finished to a high standard and designed to suit modern family life.

Upstairs, there are three generously sized bedrooms, complemented by a well-appointed family bathroom.

Externally, the property continues to impress with a generous rear garden, offering plenty of space to relax, entertain or enjoy outdoor living. A useful workshop/storage outbuilding provides excellent additional space, while side access adds to the garden's practicality.

Another of the home's features is the elevated rear aspect, enjoying far-reaching views across Barry towards the coastline and sea, creating a stunning backdrop throughout the year.

Ideally positioned within easy reach of local shops, schools and excellent public transport links, this property offers convenience alongside its many attractive features. Offered to the market with no onward chain, it presents an excellent opportunity for buyers seeking a straightforward move.

Early viewing is highly recommended to fully appreciate everything this impressive home has to offer.



CARDIFF

VALE

CAERPHILLY

BRISTOL

[www.knights.uk.com](http://www.knights.uk.com)



LIVING ROOM 21'10" x 16'9" (6.68m x 5.11m)

KITCHEN 9'1" x 7'10" (2.77m x 2.39m)

BEDROOM ONE 12'4" x 9'10" (3.76m x 3m)

BEDROOM TWO 12'4" x 11'1" (3.76m x 3.4m)

BEDROOM THREE 8'2" x 6'5" (2.49m x 1.98m)

BATHROOM 7'3" x 5'4" (2.21m x 1.65m )





Energy Efficiency Rating		Current	Potential
Very energy efficient - lower running costs			
(92 plus) A			
(81-91) B			
(69-80) C			
(55-68) D			
(39-54) E			
(21-38) F			
(1-20) G			
Not energy efficient - higher running costs			
<b>England &amp; Wales</b>		EU Directive 2002/91/EC	

