

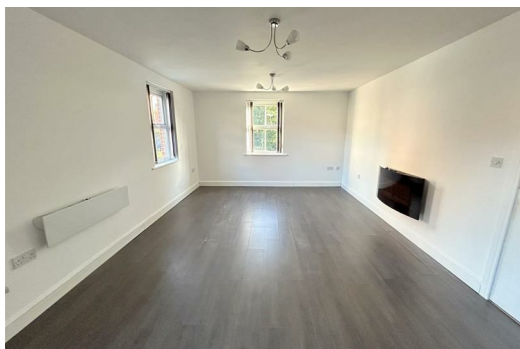
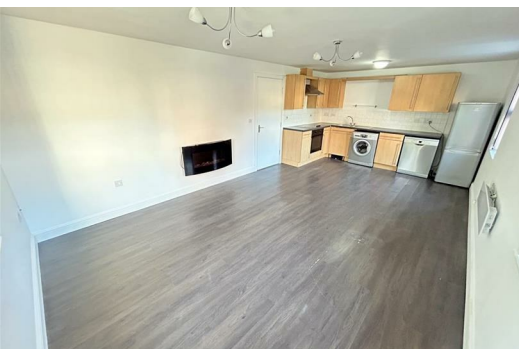


**64 Britain Street, Bury
Greater Manchester BL9 9PD**

£850 Per Calendar Month

Hyde Estates are pleased to offer this two bedroom, ground floor apartment to let. The apartment has been redecorated and is situated in a modern block with ample communal parking. Offered unfurnished and available now.

Located just off Manchester Road, Britain street is conveniently located with excellent public transport links to both Bury and Manchester City Centre.



Accommodation

Briefly comprising; communal entrance with intercom access, entrance hall with boiler cupboard providing access to all rooms. A well-proportioned, dual aspect living room able to accommodate both lounge and dining furniture, fully opens to the kitchen which is fitted with a collection of wall and base units, tiled splash backs, contrasting worksurfaces, and inset 1.5 stainless steel sink unit. Integral electric oven, four ring hob and extractor hood with space for freestanding fridge freezer, dishwasher and washing machine. Two double bedrooms. Bathroom fitted with a white suite of wc, washbasin and bath with overhead shower attachment. Complete with tiled splash backs, extractor fan, heated chrome towel rail and vinyl floor covering.

Room Measurements

Living room: 15' x 12'
Kitchen: 12' x 6'3"
Bedroom 1: 13'6" x 9' at extremes.
Bedroom 2: 11'6" x 6'8"
Bathroom: 9'2" x 6'

Parking

Ample unallocated parking.

Communal Gardens

Tended communal gardens surround the block.

Additional Information

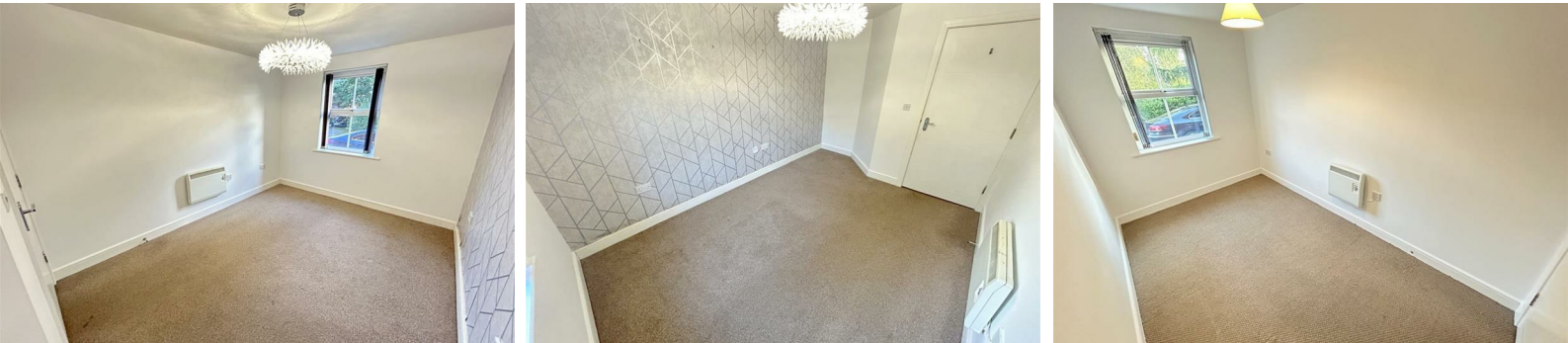
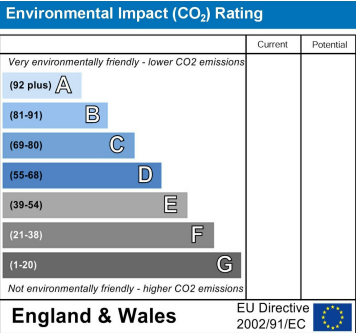
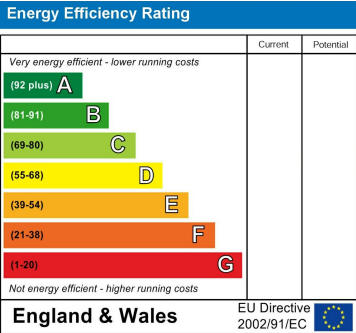
The property is serviced by wall mounted electric heaters and has uPVC double glazed windows throughout. Redecoration of all walls was completed in October '24.

Council Tax

Bury Council, Band A.

Viewings

All viewings to be arranged via Hyde Estate and Letting Agents
0161 773 4583.



1 St. Margarets Road, Prestwich, Manchester, M25 2QB