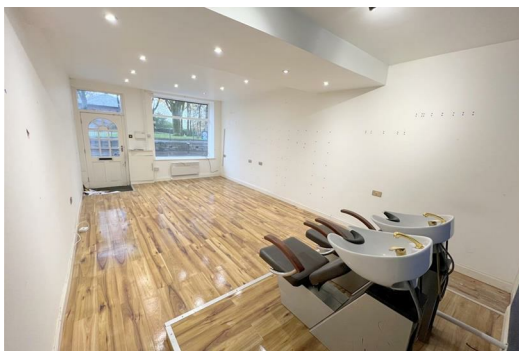




**62 Market Street, Bury
BL8 3LJ**

£625 PCM

Hyde Estates present this ground floor retail unit in Tottington town centre. Formerly trading as a hairdresser, this vacant unit presents an opportunity for possible uses including hairdressing, retail, or an office. The total approx area is 36 sqm / 386 sqft. The unit features a retail area to the front with laminate flooring throughout, inset lighting and electric shutter to the front window. A fitted kitchen together with separate WC is located to the rear. Access is available to the rear of the property via uPVC door.



Hyde Estates present this ground floor retail unit in Tottington town centre. Formerly trading as a hairdresser, this vacant unit presents an opportunity for possible uses including hairdressing, retail, or an office. The total approx area is 36 sqm / 386 sqft. The unit features a retail area to the front with laminate flooring throughout, inset lighting and electric shutter to the front window. A fitted kitchen together with separate WC is located to the rear. Access is available to the rear of the property via uPVC door.

Use class - E

EPC rating - D

Dimensions - approx area is 36 sqm / 386 sqft.

Rent - £7,500pax

Available - Immediately

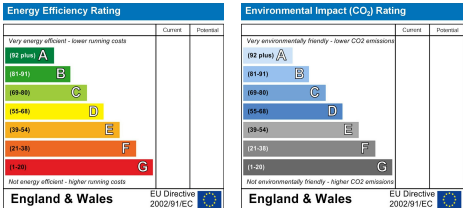
Location - Located in the heart of Tottington town centre on Market Street, opposite Town Meadow Park. Tottington bus and coach station is only a moment's walk. Only 2.6 miles to Bury town centre and 3.7 miles to the M66 motorway junction 2.

Terms - lease by negotiation

Business rates - all parties should make their own enquiries with Bury council 0161 253 5656 as to the business rates.

Legal costs - each party to bear their own legal costs

Viewings - please contact Hyde Estate & Letting Agents 0161-773 4583



1 St. Margarets Road, Prestwich, Manchester, M25 2QB

