



**Apartment 2, 17 Bury Street, Radcliffe
Manchester M26 2GB**

£895 PCM

Hyde Estates are delighted to offer this first floor two bedroom apartment above a shop to let. The property has been redecorated throughout and benefits from new carpets, window blinds and new energy efficient electric heaters.

Located within a short stroll of Close park with excellent links to both Radcliffe and Bury Town Centre. Offered unfurnished and available now.

(Please note access is to the rear of the property via a communal entrance servicing two apartments).



Accommodation

Access via a communal entrance servicing two apartments. Stairs to the first floor. From the apartment entrance is a long hallway with multiple storage areas opening to all rooms. The open plan living room/kitchen features laminate flooring and multiple windows bringing in ample natural light with space for both lounge and dining furniture. The kitchen comprises both wall and base gloss fronted units with contrasting worksurfaces and tiled splashbacks, inset sink unit with mixer tap and integral electric oven with four ring hob and extractor. Space for a freestanding fridge freezer and plumbing for a washing machine. The main bedroom is a spacious double room with the smaller second bedroom being a single room, ideal for a home office. Shower room features a three piece suite of wc, washbasin and shower cubicle with electric shower. Tiled splashbacks and vinyl flooring.

Room Measurements

To follow...

Additional Information

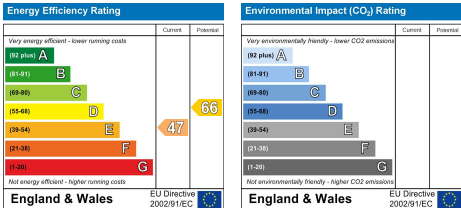
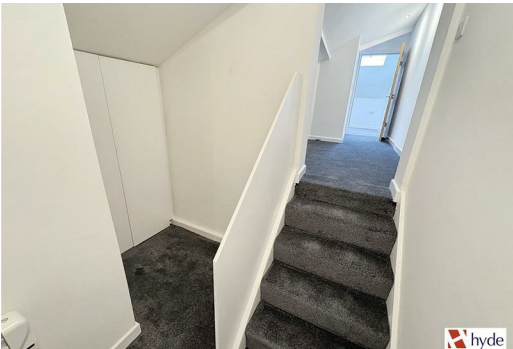
The property has been redecorated throughout and benefits from new carpets, window blinds and new energy efficient electric heaters. UPVC double glazed with Velux windows to both bedrooms. Please note access is to the rear of the property via a communal entrance servicing two apartments.

Council Tax

Bury Council, Band A.

Viewing

To be arranged via Hyde Estate & Letting Agents 0161 773 4583



1 St. Margarets Road, Prestwich, Manchester, M25 2QB