



**2 Lamorna Close, Manchester  
M7 3GT**

**£1,195 PCM**

Hyde Estates present this three bedroom semi detached house to let. Ideally situated on a leafy cul-de-sac off Littleton Road with excellent links to Manchester City Centre. Located on the doorstep of Kersal Sale and Salford Sports Village. The property has been redecorated throughout (June 2025) and benefits off street parking and a rear garden. Offered unfurnished and available now.





Accommodation

Briefly comprising; entrance hall, carpeted living room with ample space for lounge furniture and double doors to the kitchen. The dining kitchen features a range of white gloss wall and base mounted cupboards with integral gas hob/oven/extractor, space for a free standing fridge freezer, dining suite and plumbing for a washing machine. Understairs storage cupboard and french doors allowing access to the garden. To the first floor are two double bedrooms and one single together with a three piece family bathroom suite.

Room Measurements

- Living room: 15`11" x 11`7"
- Kitchen/diner 14` 11" x 8`6"
- Bedroom 1: 11`8" x 8` 1"
- Bedroom 2: 10`3" x 8`1"
- Bedroom 3: 7`6" x 6`6"
- Bathroom: 6`9" x 5`7"

Gardens

Paved driveway to the front of the property with gated side access opening to the rear garden with fenced borders.

Parking

Paved driveway located at the front of the property.

Additional Information

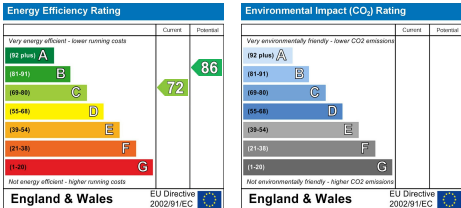
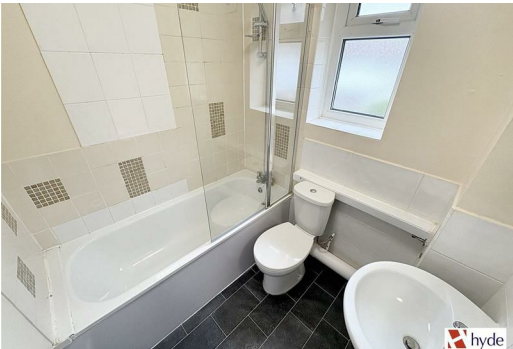
The property has been redecorated throughout (June 2025) and benefits uPVC double glazed windows and doors together with gas central heating and storage to both the ground and first floor.

Council Tax

Salford Council, Band B.

Viewings

All viewings to be arranged via Hyde Estate and Letting Agents 0161 773 4583.



1 St. Margarets Road, Prestwich, Manchester, M25 2QB