

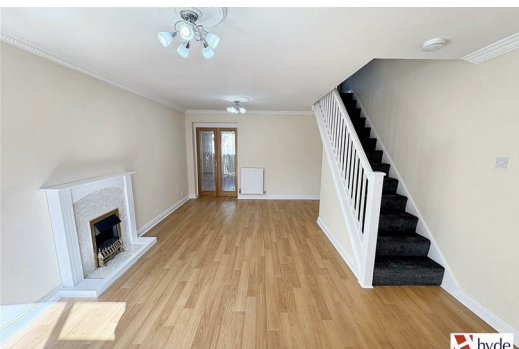


**26 Canterbury Drive, Prestwich  
Manchester M25 0HY**

**£1,500 Per Calendar Month**

Hyde Estates are delighted to offer this extended three bedroom semi detached property to let. Redecorated throughout in August 2025, the property is immaculately presented and features both a modern kitchen and bathroom. Benefits include off road parking, a detached garage and large gardens to the front and rear. Offered unfurnished and available now.

Located at the head of a quiet cul-de-sac in the ever popular Sedgley Park area of Prestwich, close to; shops, schools and places of worship with excellent links to Manchester City Centre.





Accommodation

Briefly comprising; vestibule entrance, living room with feature fire together with timber connecting french doors to the dining room. The fitted kitchen benefits a range of wall and base mounted cupboards with contrasting working surfaces and tiled splashbacks. Integrated appliances include a four ring gas hob with overhead extractor fan, eye level double oven and dishwasher, with space for a freestanding fridge. To the first floor are three bedrooms all with fitted wardrobes and a fully tiled three-piece bathroom with chrome towel warmer.

Room Measurements

- Lounge; 20`3" x 12`11"
- Dining room; 16`2" x 8`9"
- Kitchen; 12`4" x 6`4"
- Bedroom 1: 13` x 10`7" at extremes
- Bedroom 2: 12`6" x 6`5"
- Bedroom 3: 6`11" x 6`10"
- Bathroom: 7`3" x 4`10"

Gardens

To the front of the property is a block paved driveway leading to the garage and lawned area with front path. The generous rear garden features a paved patio and lawn, with fenced borders.

Parking

Block paved driveway to the front of the property.

Garage

Detached brick built garage with up and over garage door.

Additional Information

The property has mostly uPVC double glazed windows together with gas central heating. The property was redecorated throughout in August 2025.

Council Tax

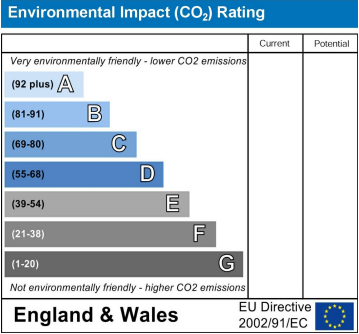
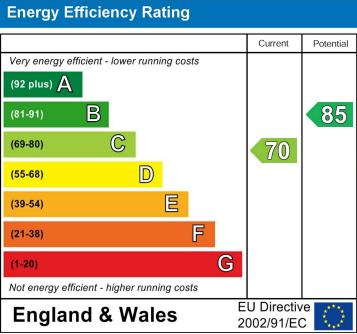
Bury Council, Band C.

Viewings

To be arranged via Hyde Estate & Letting Agents 0161 773 4583.

Disclaimer

The information and images provided in this property advertisement are intended for guidance purposes only. While we make every effort to ensure the accuracy of the details, we strongly recommend that interested parties view the property in person to confirm the property’s condition and suitability for their specific requirements.



1 St. Margarets Road, Prestwich, Manchester, M25 2QB