

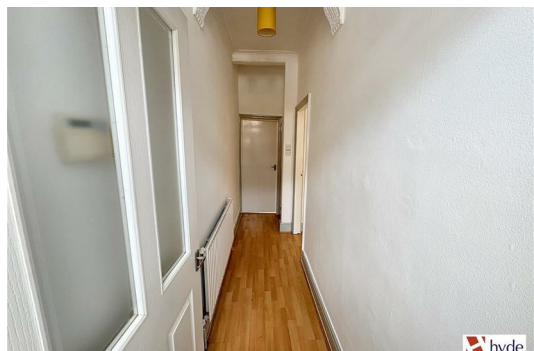


**88 Milton Road, Prestwich  
Manchester M25 1PU**

**£1,250 PCM**

Hyde Estates are pleased to offer this three bedroom mid terraced house to let. The property offers spacious living accommodation and is well presented throughout. Includes low maintenance gardens to the front and rear. Offered unfurnished and available now.

Ideally situated just a short walk from Prestwich Village and all its amenities and on the doorstep of Heaton Park and its Metrolink station. Excellent links to Manchester City Centre and the motorway network.





Accommodation

Briefly comprising; porch, entrance hall, spacious bay fronted living room and diner kitchen with ample space for family sized dining suite and understairs storage cupboard. The kitchen is fitted with a range of wall and base mounted cupboards with contrasting working surfaces, inset sink unit with mixer tap, integral oven, gas hob and extractor hood. Off the kitchen is a utility room that also provides a range of wall and base mounted cupboards together with plumbing for a washing machine and yard access. The carpeted stairs lead to the first floor landing allowing access to all bedrooms and a three piece bathroom suite with bath, over bath shower, glass shower screen, WC and washbasin.

Room Measurements

- Living room; 15`7" x 10`9"
- kitchen; 14`4" x 12`8"
- Utility room; 7`10" x 6`5"
- Bedroom 1; 14`4" x 13`2"
- Bedroom 2; 10` x 7`1"
- Bedroom 3; 10` x 6`11"
- Bathroom; 8`5" x 5`5"

Gardens

Gated front garden and rear yard featuring a decked patio area and outdoor storage.

Additional Information

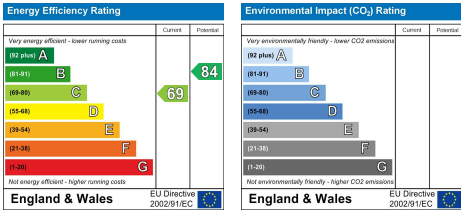
Benefits gas central heating and uPVC double glazed windows.

Council Tax

Bury Council, Band A.

Viewings

All viewings to be arranged via Hyde Estate and Letting Agents 0161 773 4583



1 St. Margarets Road, Prestwich, Manchester, M25 2QB

