



REGENT  
ESTATES

Restricted Zone  
At any time  
No loading  
at any time



# HIGH STREET, BERKHAMSTED

**£430,000** Leasehold - Share of Freehold

---

## ACCOMMODATION

This impressive newly decorated two bedroom apartment (914 sq ft) is located in the coveted and iconic Rex Apartments, located in the centre of Berkhamsted town with all amenities on the door step. With private gate and security access, location lift access, undercover parking, and close to the station this property appeals to modern day living.

Inside, the apartment boasts natural light throughout, offers a good size living/dining room, and a large modern kitchen. There are two double bedrooms, both with fitted wardrobes, and the master is complete with an en-suite shower room. A separate bathroom serves the second bedroom.

The property is part of a freehold company and has a new updated lease of 999 years. This apartment would make a great investment opportunity and equally a lovely home for an owner-occupier.

Berkhamsted was recently voted one of the best locations to live in the Southeast and offers a good range of leisure facilities in the area including train stations, walking and riding just minutes away in the surrounding countryside and on the National Trust's 5,000 acre Ashridge Estate (around 3 miles away), while nearby golf courses include Ashridge, Berkhamsted and The Grove.

## IMPORTANT NOTICE

1. These sales particulars have been prepared from information supplied by the vendors and information collated by Regent Estates.
2. Confirmation has been sought from the vendors to confirm these particulars accuracy.
3. All measurements given have a tolerance of 3" in accordance with RICS Code of Measuring Practice.
4. None of these appliances, plumbing or electrics mentioned within these particulars have been tested by ourselves, prospective purchasers are urged to check their condition before entering in to purchase.

## VIEWING

Strictly by appointment through Regent Estates.

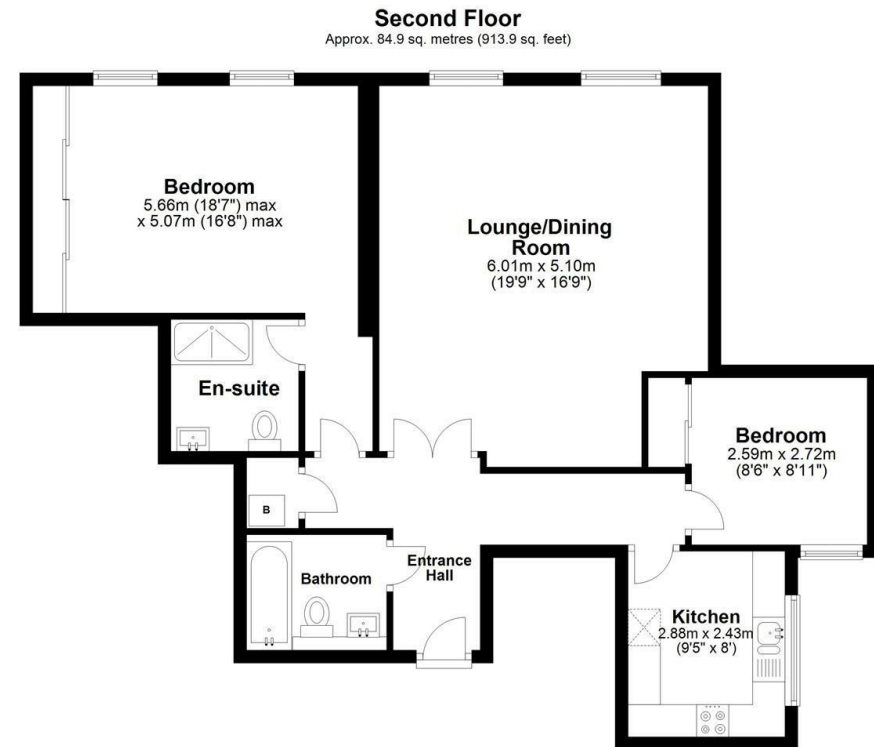
01442 877878  
141-143 High Street, Berkhamsted, Herts,  
HP4 3HH

Email: [info@regent-estates.com](mailto:info@regent-estates.com)  
[www.regent-estates.com](http://www.regent-estates.com)









Total area: approx. 84.9 sq. metres (913.9 sq. feet)

Disclaimer - Floor plan is for marketing purposes only and is to be used as a guide - SKM Studio  
Plan produced using PlanUp.

**REGENT  
ESTATES**

TELEPHONE: 01442 877878

141-143 High Street, Berkhamsted,  
Herts, HP4 3HH

Email: [info@regent-estates.com](mailto:info@regent-estates.com)

[www.regent-estates.com](http://www.regent-estates.com)