



REGENT
ESTATES

CHESHAM ROAD, BERKHAMSTED

£550,000 Leasehold

ACCOMMODATION

Beautifully presented and built to a high quality specification, this two double bedroom, two bathroom top floor apartment with lift access is set in an elevated position in a prestigious development of just twelve luxury apartments.

EXCLUSIVE DEVELOPMENT * STYLISH AND QUALITY COMMUNAL AREAS * LIFT ACCESS * SPACIOUS ENTRANCE HALL * LIVING ROOM WITH BALCONY * FULLY FITTED LUXURY KITCHEN * MASTER BEDROOM WITH FITTED WARDROBES AND ENSUITE BATHROOM WITH SEPARATE SHOWER CUBICLE * SECOND BEDROOM * SHOWER ROOM * GAS UNDERFLOOR HEATING * DOUBLE GLAZING * COMMUNAL LANDSCAPED GARDENS * ALLOCATED PARKING SPACE * VISITORS PARKING * SEPARATE LARGE STORAGE CUPBOARD IN THE BLOCK * WALKING DISTANCE TO THE TOWN CENTRE AND RAILWAY STATION

LOCATION

Berkhamsted is a vibrant town with a cosmopolitan mix of shops restaurants and bars and the renowned Berkhamsted School. It nestles in a valley of the Chiltern Hills with excellent rail links to London Euston (approximately 30 minutes). The A41 bypass provides easy access to junction 20 of the M25, the M1, Heathrow and Luton Airports.

OUTSIDE

Outside, there are landscaped communal gardens, allocated parking, and visitors parking.

IMPORTANT NOTICE

1. These sales particulars have been prepared from information supplied by the vendors and information collated by Regent Estates.
2. Confirmation has been sought from the vendors to confirm these particulars accuracy.
3. All measurements given have a tolerance of 3" in accordance with RICS Code of Measuring Practice.
4. None of these appliances, plumbing or electrics mentioned within these particulars have been tested by ourselves, prospective purchasers are urged to check their condition before entering in to purchase.

VIEWING

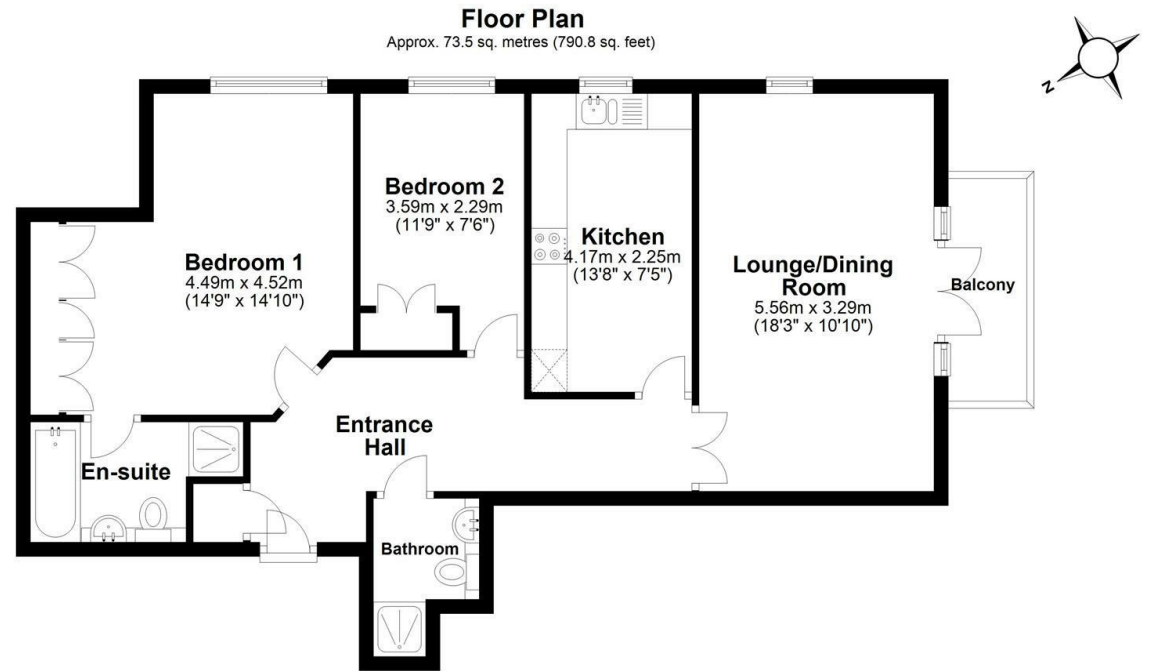
Strictly by appointment through Regent Estates.

01442 877878
141-143 High Street, Berkhamsted, Herts,
HP4 3HH

Email: info@regent-estates.com
www.regent-estates.com







Total area: approx. 73.5 sq. metres (790.8 sq. feet)

Disclaimer - Floor plan is for marketing purposes only and is to be used as a guide.
Plan produced using PlanUp.

**REGENT
ESTATES**

TELEPHONE: 01442 877878

141-143 High Street, Berkhamsted,
Herts, HP4 3HH

Email: info@regent-estates.com

www.regent-estates.com