



SEYMOUR ROAD

KNOWLE COTTAGE

REGENT  
ESTATES

# SEYMOUR ROAD, NORTHCHURCH, BERKHAMSTED

£1,550 PCM

---

## ACCOMMODATION

A nicely presented TWO bedroom cottage with large converted loft room, situated in Northchurch, a short drive to Berkhamsted town centre. DRIVEWAY PARKING for one car. Courtyard garden, garden office with electric heating. Gas central heating. EPC rating E. Council Tax Band C.

AVAILABLE END OF MAY

Accommodation: Cosy sitting room with log burner, fully fitted kitchen, large master bedroom, modern shower room, single bedroom/office, stairs up to a spacious loft room with eaves storage.

## LOCATION

## OUTSIDE

## IMPORTANT NOTICE

1. These sales particulars have been prepared from information supplied by the vendors and information collated by Regent Estates.
2. Confirmation has been sought from the vendors to confirm these particulars accuracy.
3. All measurements given have a tolerance of 3" in accordance with RICS Code of Measuring Practice.
4. None of these appliances, plumbing or electrics mentioned within these particulars have been tested by ourselves, prospective purchasers are urged to check their condition before entering in to purchase.

## VIEWING

Strictly by appointment through Regent Estates.

01442 877878

141-143 High Street, Berkhamsted, Herts,  
HP4 3HH

Email: [info@regent-estates.com](mailto:info@regent-estates.com)

[www.regent-estates.com](http://www.regent-estates.com)



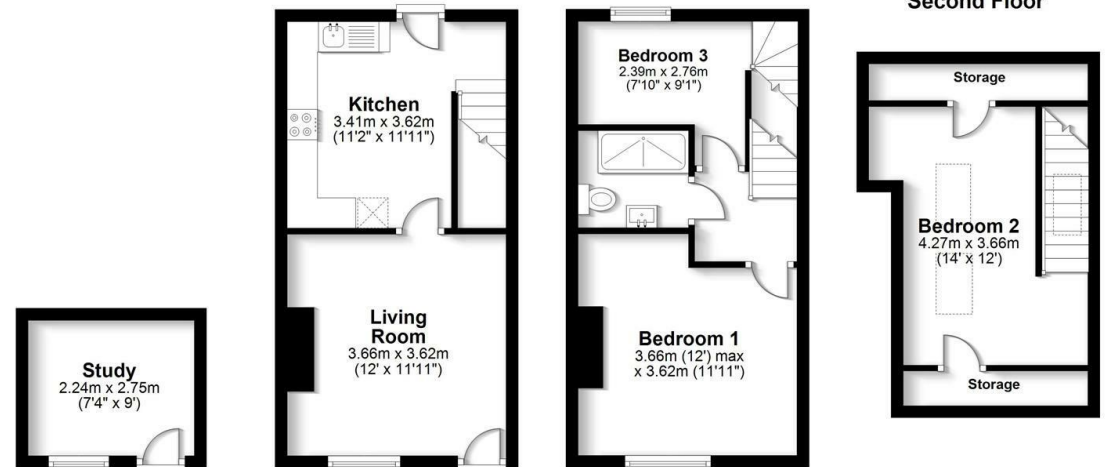




Ground Floor

First Floor

Second Floor



Total area: approx. 66.3sq. metres (713.4sq. feet)

FOR ILLUSTRATIVE PURPOSES ONLY - NOT TO SCALE - The position and size of doors, windows, appliances and other features are approximate only. Total area includes garages and outbuildings - © My Home Property Marketing - Unauthorised reproduction prohibited. Plan produced using PlanUp.

REGENT  
ESTATES

TELEPHONE: 01442 877878  
141-143 High Street, Berkhamsted,  
Herts, HP4 3HH  
Email: info@regent-estates.com  
www.regent-estates.com