

REGENT ESTATES

REGENT
ESTATES

BERKHAMSTED

£2,750

PCM

ACCOMMODATION

A luxury three bedroom DUPLEX apartment located an expertly converted period building with stylishly crafted interior and beautifully finished to the highest standard throughout. Close walking distance to Berkhamsted town centre and train station. TWO OUTDOOR TERRACES.

One allocated parking space with EV charging point. Communal courtyard garden, bin/bike store.

Gas central heating. EPC B. Council tax band TBC.

AVAILABLE NOW!

Accommodation: Entrance into large hallway/study area, patio doors out to large private terrace, stairs up to spacious second bedroom with stylish ensuite shower room, main bedroom with feature chimney breast and ensuite bathroom, views over the valley. Large hallway/living space with second small balcony, third family shower room, further double bedroom, beautiful open plan kitchen living area.

LOCATION

OUTSIDE

IMPORTANT NOTICE

1. These sales particulars have been prepared from information supplied by the vendors and information collated by Regent Estates.
2. Confirmation has been sought from the vendors to confirm these particulars accuracy.
3. All measurements given have a tolerance of 3" in accordance with RICS Code of Measuring Practice.
4. None of these appliances, plumbing or electrics mentioned within these particulars have been tested by ourselves, prospective purchasers are urged to check their condition before entering in to purchase.

VIEWING

Strictly by appointment through Regent Estates.

01442 877878

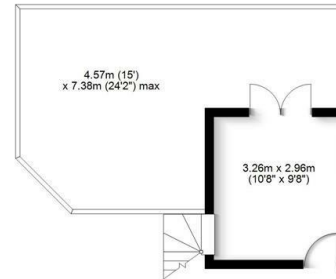
141-143 High Street, Berkhamsted, Herts,
HP4 3HH

Email: info@regent-estates.com
www.regent-estates.com



First Floor

Approx. 9.6 sq. metres (103.8 sq. feet)



Second Floor

Approx. 123.5 sq. metres (1329.1 sq. feet)



Total area: approx. 133.1 sq. metres (1432.9 sq. feet)

FOR ILLUSTRATIVE PURPOSES ONLY - NOT TO SCALE - The position and size of doors, windows, appliances and other features are approximate only. Total area includes garages and outbuildings -
© My Home Property Marketing - Unauthorised reproduction prohibited.
Plan produced using PlanUp.

REGENT
ESTATES

TELEPHONE: 01442 877878

141-143 High Street, Berkhamsted,
Herts, HP4 3HH

Email: info@regent-estates.com

www.regent-estates.com