



REGENT
ESTATES

DELL FIELD AVENUE, BERKHAMSTED

£800 PCM

ACCOMMODATION

A well presented one bedroom ground floor flat located in a popular residential road, a short walk to the train station and high street benefiting from off street parking for one car. Ideal for single occupancy. UNFURNISHED. Electric heating. EPC Rating C. Council Tax Band A.

AVAILABLE MID-END JANUARY

Accommodation: Entrance, open plan living room/kitchen with appliances, double bedroom, shower room with utility cupboard, hard flooring throughout.

LOCATION

OUTSIDE

IMPORTANT NOTICE

1. These sales particulars have been prepared from information supplied by the vendors and information collated by Regent Estates.
2. Confirmation has been sought from the vendors to confirm these particulars accuracy.
3. All measurements given have a tolerance of 3" in accordance with RICS Code of Measuring Practice.
4. None of these appliances, plumbing or electrics mentioned within these particulars have been tested by ourselves, prospective purchasers are urged to check their condition before entering in to purchase.

VIEWING

Strictly by appointment through Regent Estates.

01442 877878

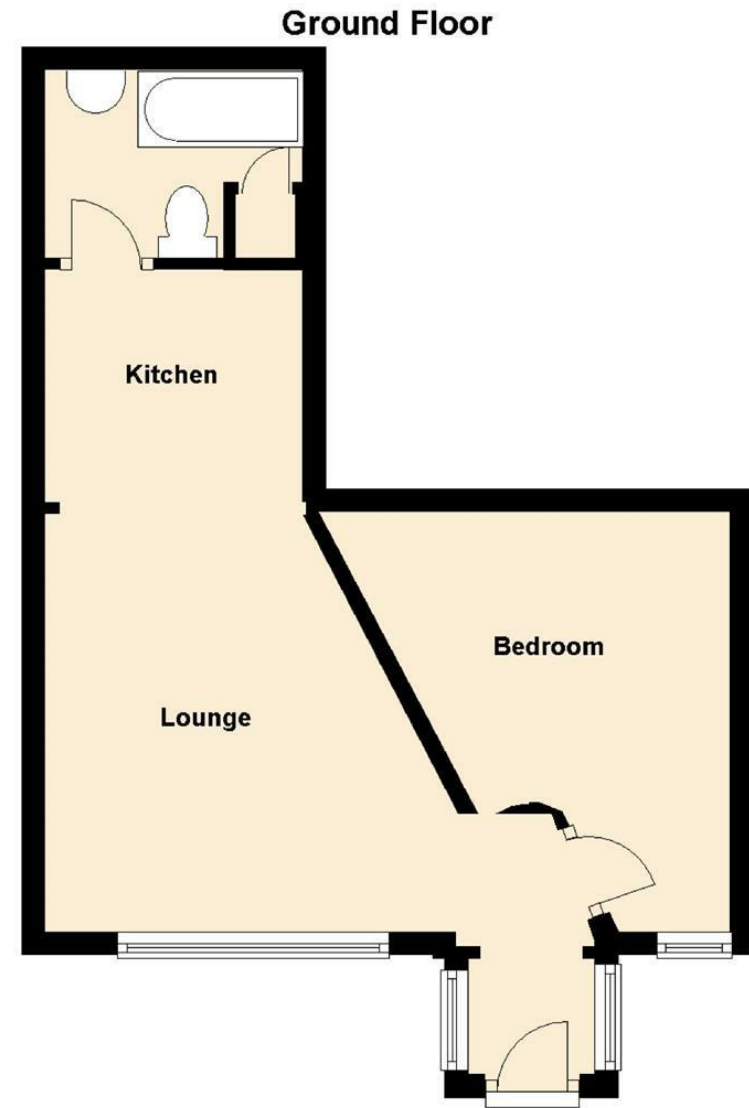
141-143 High Street, Berkhamsted, Herts,
HP4 3HH

Email: info@regent-estates.com
www.regent-estates.com



REGENT ESTATES





**REGENT
ESTATES**

TELEPHONE: 01442 877878

141-143 High Street, Berkhamsted,
Herts, HP4 3HH

Email: info@regent-estates.com

www.regent-estates.com