



HARDINGS



Kingsbury Drive
Guide Price £550,000

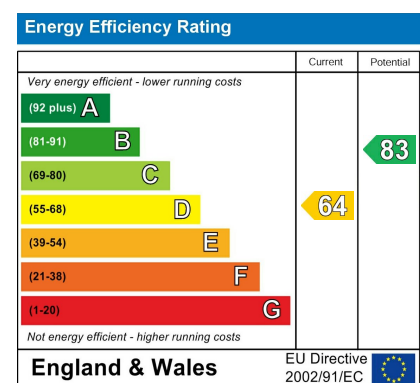




This three-bedroom home on Kingsbury Drive, in Old Windsor, offers well-proportioned accommodation, off-street parking and a large garden with a fully self-contained log cabin. The property features a spacious family kitchen/diner, alongside a comfortable dual aspect reception room with views over the garden. Upstairs are three well-sized bedrooms and a family bathroom, all presented in good order.

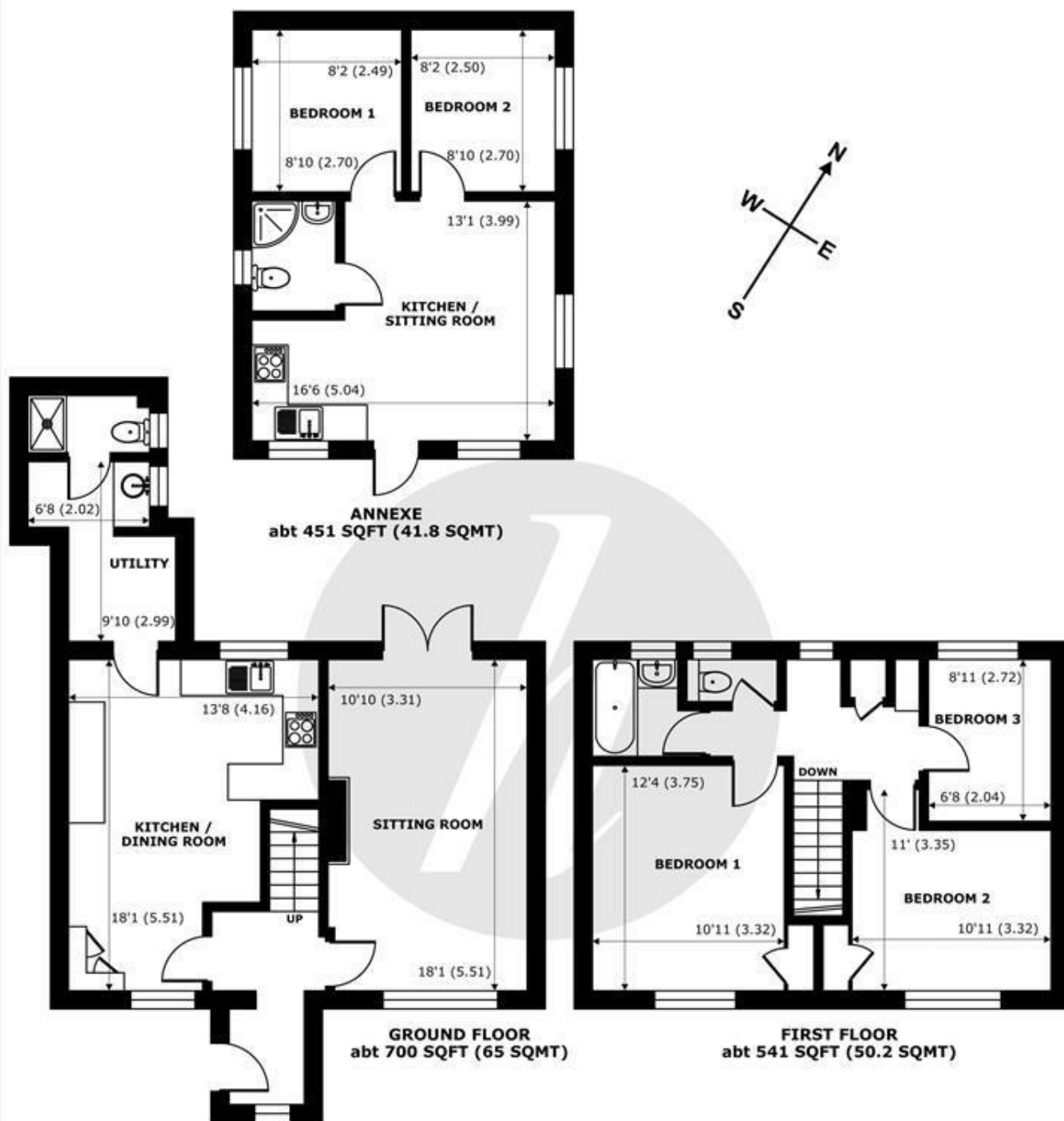
The rear garden is a key highlight, extending to an impressive size and incorporating a substantial multi-room garden log cabin. This versatile space is well suited for guests, home working, extended family or potential annexe use (subject to any necessary consents).

A convenient location within a short distance of local schools, nurseries and amenities, with easy access to Windsor and surrounding transport links.



Features

- Off Street Parking
- Large Family Kitchen/Diner
- Two Bathrooms
- Multi Room Garden Log Cabin
- Short Distance to Local Schools & Amenities
- Three Bedrooms
- Utility Room
- Large Garden
- Quiet Residential Location
- Dual Aspect Reception Room



Kingsbury Drive, Old Windsor, Windsor, SL4

Approximate Internal Area = 1018 sq ft / 94.5 sq m
 Approximate External Area = 1241 sq ft / 115.2 sq m
 Annexe = 371 sq ft / 34.4 sq m

For identification only - Not to scale



Floor plan produced in accordance with RICS Property Measurement 2nd Edition, Incorporating International Property Measurement Standards (IPMS2 Residential). © nichecom 2026. Produced for Hardings. REF: 1405375





11 High Street, Windsor, Berkshire, SL4 1LD,
T: 01753 833 118 | E: info@hardings.co.uk
www.hardings.co.uk

