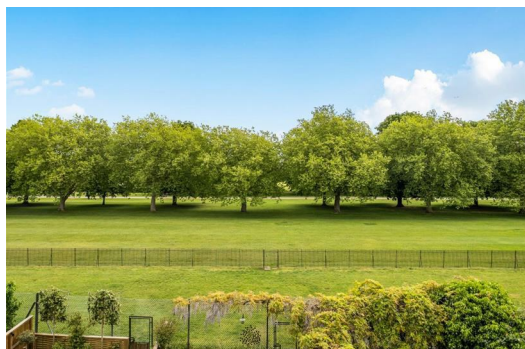




# HARDINGS



Kings Road  
Guide Price £1,250,000

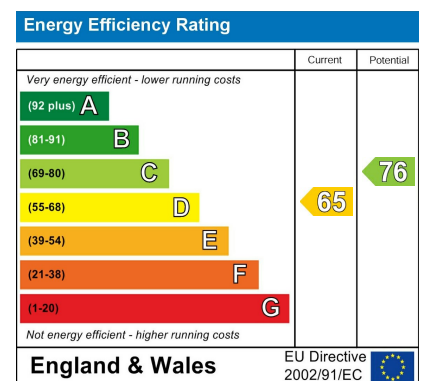




A spacious three/four bedroom townhouse ideally positioned on the sought-after Kings Road in Windsor's prestigious Golden Triangle, offering flexible accommodation and excellent potential for refurbishment and modernisation.

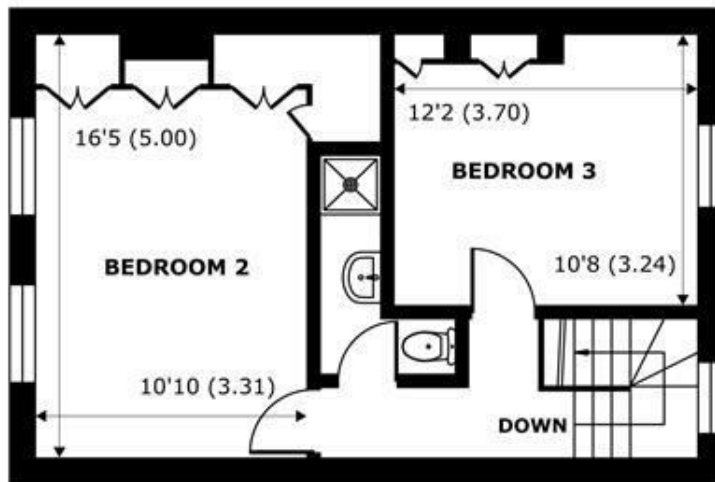
The house benefits from a private patio garden together with a further well-maintained communal gardens, with direct access onto the historic Long Walk, offering exceptional outdoor space right on the doorstep.

Situated in one of Windsor's most desirable residential locations, the property is conveniently positioned within easy reach of Windsor town centre, excellent schools, mainline stations, Heathrow Airport and the M4 motorway, whilst offering a rare opportunity to acquire a home with huge potential in an outstanding setting.

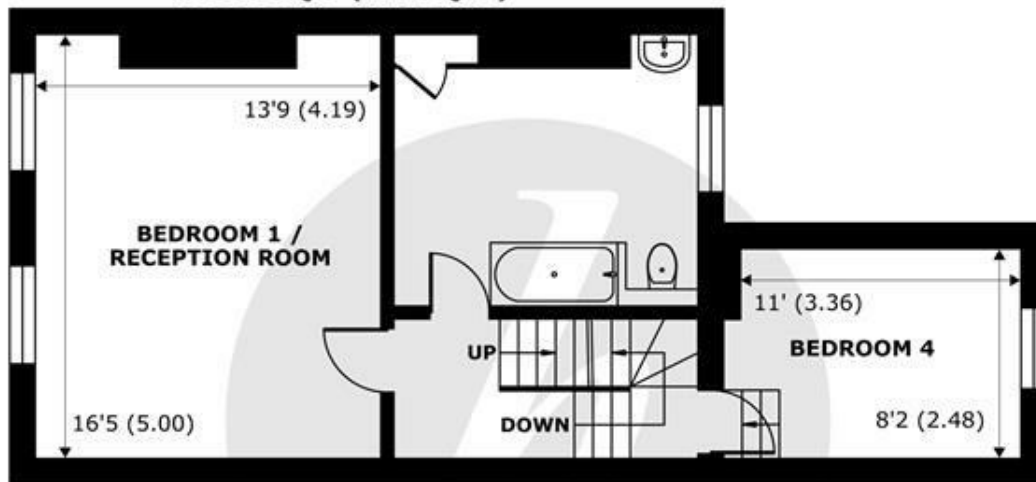


## Features

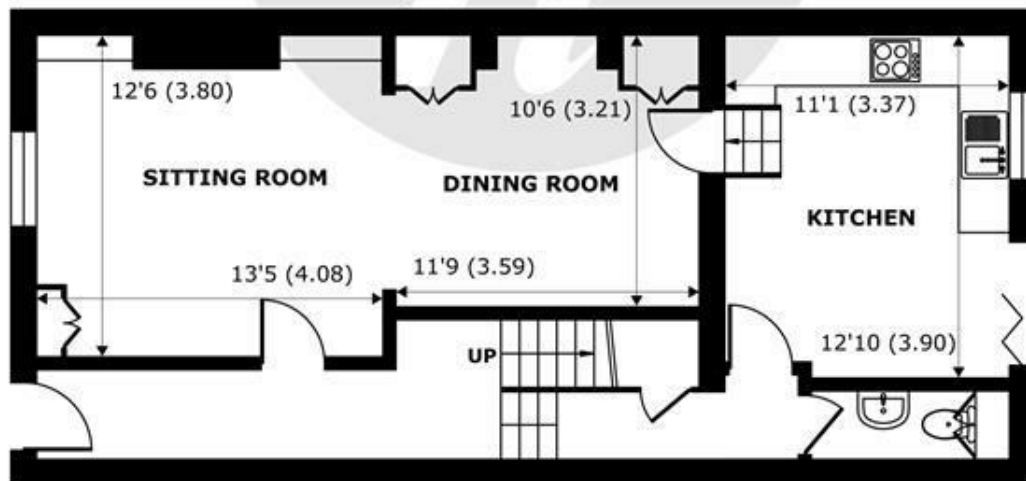
- Three/ Four Bedroom Town House
- Private Patio Garden
- Direct Access to The Long Walk
- Refurbishment Opportunity
- Double Reception
- Further Communal Gardens
- Two Bathrooms
- Golden Triangle



**SECOND FLOOR**  
abt 508 SQFT (47.1 SQMT)



**FIRST FLOOR**  
abt 635 SQFT (58.9 SQMT)



**GROUND FLOOR**  
abt 729 SQFT (67.7 SQMT)

## Kings Road, Windsor, SL4

Approximate Internal Area = 1564 sq ft / 145.3 sq m

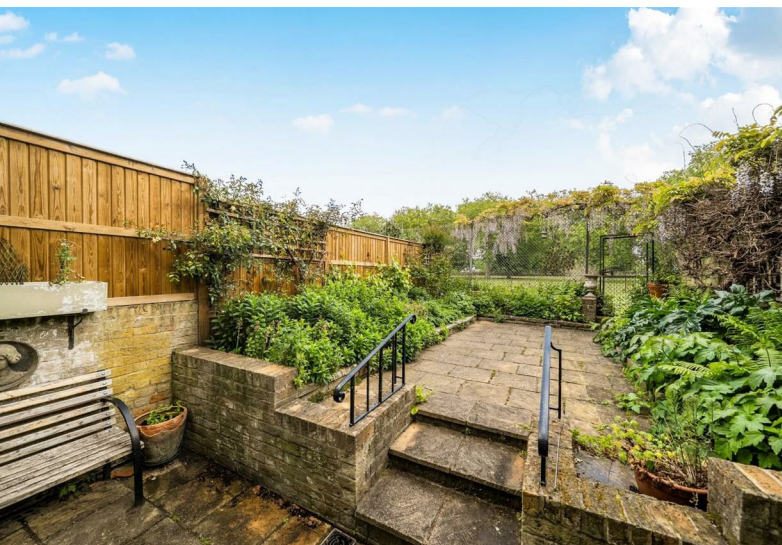
Approximate External Area = 1872 sq ft / 173.9 sq m

For identification only - Not to scale



Floor plan produced in accordance with RICS Property Measurement 2nd Edition, Incorporating International Property Measurement Standards (IPMS2 Residential). © nichecom 2026. Produced for Hardings. REF: 1447558





11 High Street, Windsor, Berkshire, SL4 1LD,  
T: 01753 833 118 | E: [info@hardings.co.uk](mailto:info@hardings.co.uk)  
[www.hardings.co.uk](http://www.hardings.co.uk)

