



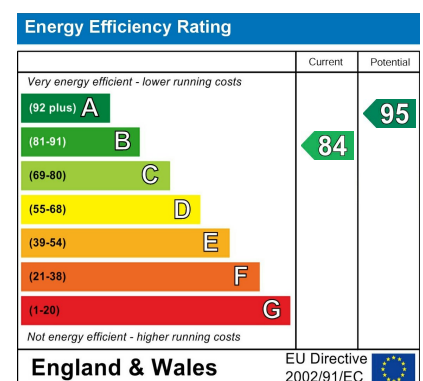
Bridgeman Drive  
Guide Price £675,000





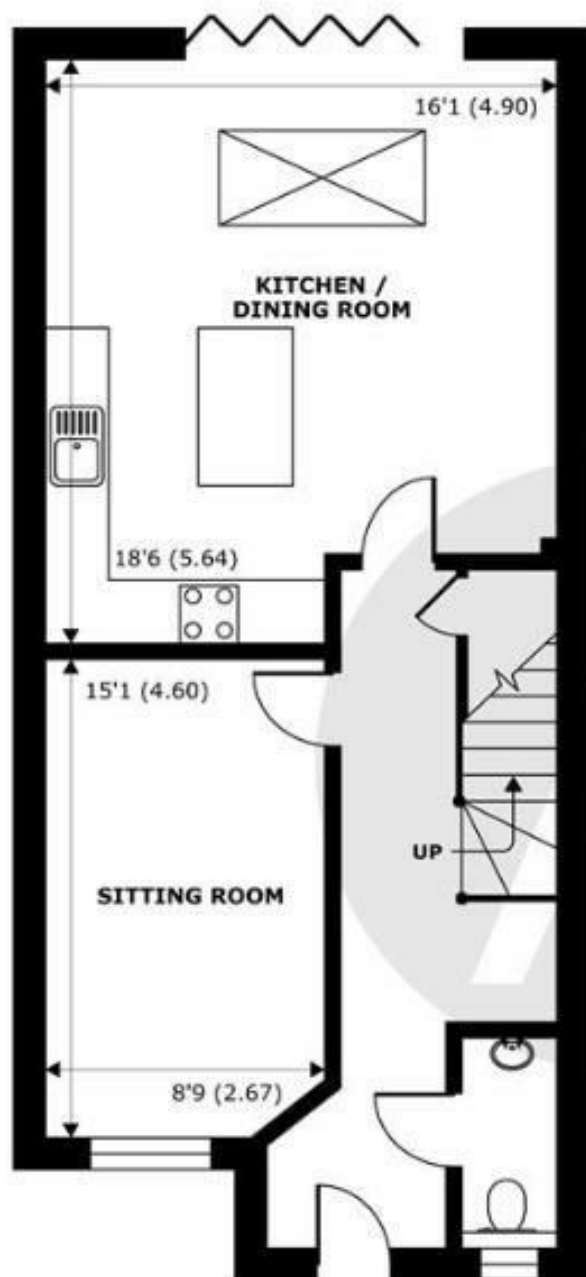


This immaculately presented home is situated in a sought after cul de sac, in a stunning development. It has recently benefitted from a full cosmetic refurbishment to an exceptional standard. The interior showcases high-quality finishes, neutral tones, and updated fixtures that perfectly balance comfort and sophistication. Outside, the property enjoys a beautifully landscaped garden with side access. This is a rare opportunity to acquire a beautiful home in an exceptional location ready for immediate occupancy. Conveniently located within a short distance to Windsor Town Centre with close proximity to excellent transport links and local schools.

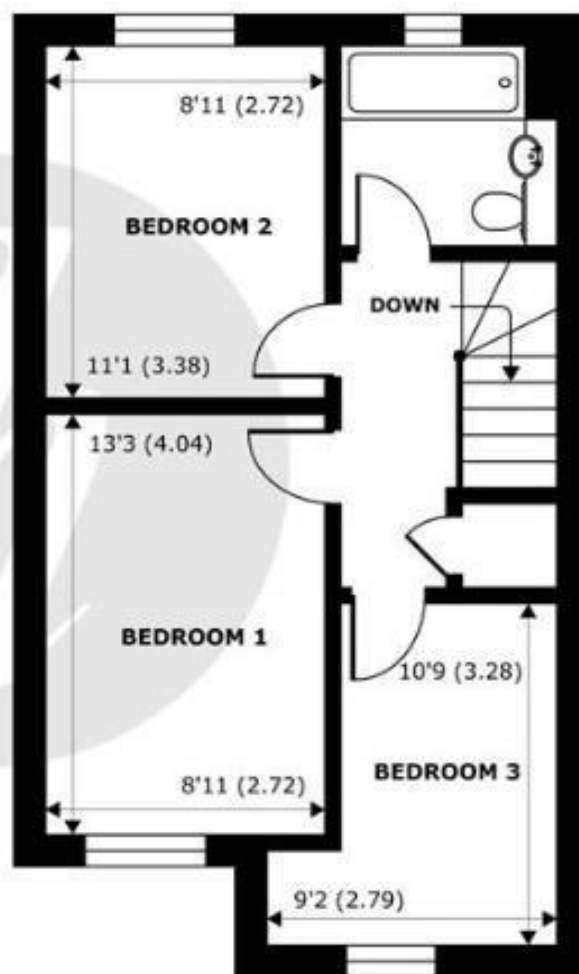


## Features

- Three Bedrooms
- Allocated Off Street Parking
- Modern Eat-in Kitchen Diner
- Side Access
- Downstairs Cloakroom
- Semi- Detached Home
- Quiet Location
- Private Landscaped Garden
- Immaculate Condition Throughout
- Front Reception Room



**GROUND FLOOR**  
abt 696 SQFT (64.7 SQMT)



**FIRST FLOOR**  
abt 530 SQFT (49.2 SQMT)

## St. Annes Mews, 6A Bridgeman Drive, Windsor, SL4

Approximate Internal Area = 1020 sq ft / 94.8 sq m  
Approximate External Area = 1226 sq ft / 113.9 sq m

For identification only - Not to scale

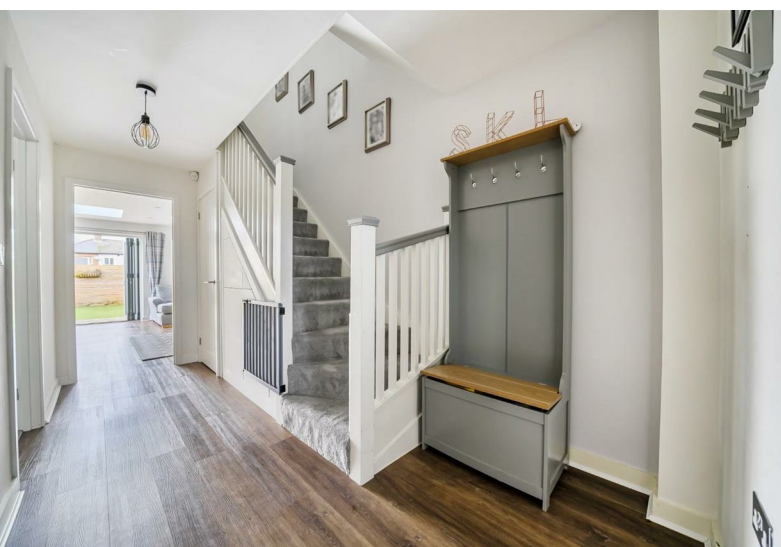


Certified  
Property  
Measurer

Floor plan produced in accordance with RICS Property Measurement Standards incorporating International Property Measurement Standards (IPMS2 Residential). © nidecom 2021. Produced for Hardings. REF: 824113.







11 High Street, Windsor, Berkshire, SL4 1LD,  
T: 01753 833 118 | E: [info@hardings.co.uk](mailto:info@hardings.co.uk)  
[www.hardings.co.uk](http://www.hardings.co.uk)

