



# HARDINGS




Alexandra Road  
£2,400 PCM







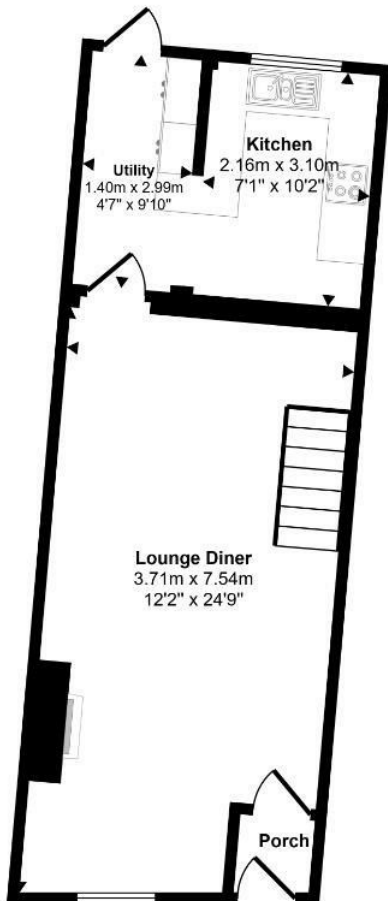
An attractive 2 bedroom end-terrace period villa with a bonus loft room located on the fringes of the Golden Triangle, just a short walk to Windsor's bustling town centre and mainline rail connections to London (Waterloo & Paddington).

Energy Efficiency Rating		
	Current	Potential
Very energy efficient - lower running costs		
(92 plus) <b>A</b>		
(81-91) <b>B</b>		
(69-80) <b>C</b>		
(55-68) <b>D</b>		
(39-54) <b>E</b>		
(21-38) <b>F</b>		
(1-20) <b>G</b>		
Not energy efficient - higher running costs		
<b>England &amp; Wales</b>	EU Directive 2002/91/EC 	

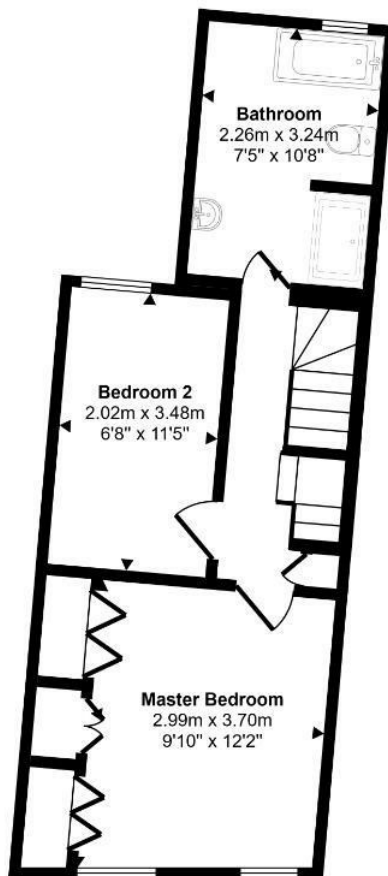
## Features

- Two double bedrooms
- Four piece bathroom suite
- Open plan living/dining area
- Town Centre Location
- Private rear garden
- Bonus loft room
- Fitted wardrobes
- End of terrace with side access
- Unfurnished
- Permit Parking

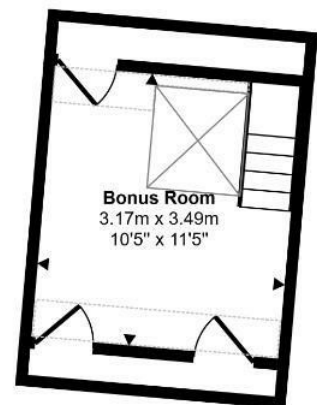
Approx Gross Internal Area  
89 sq m / 958 sq ft




Ground Floor  
Approx 40 sq m / 427 sq ft



First Floor  
Approx 35 sq m / 376 sq ft

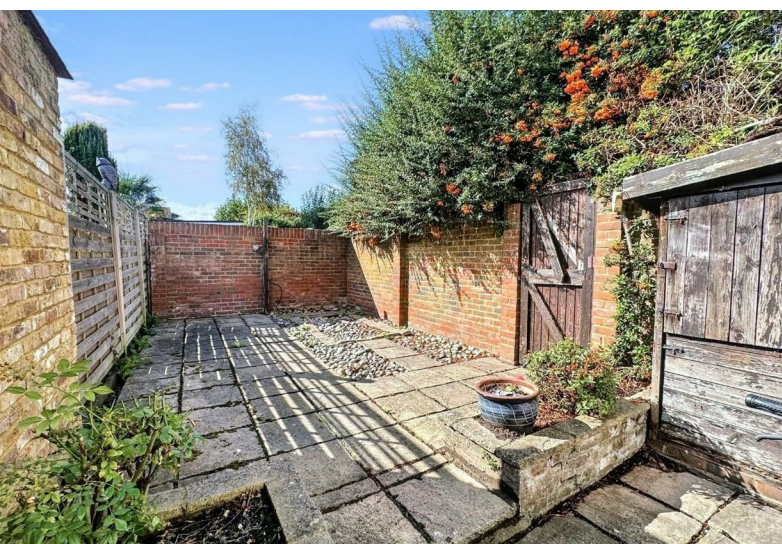
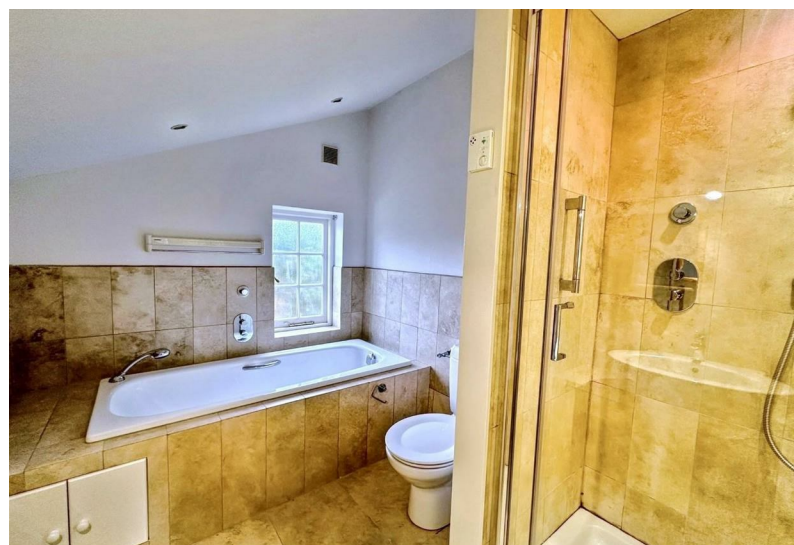
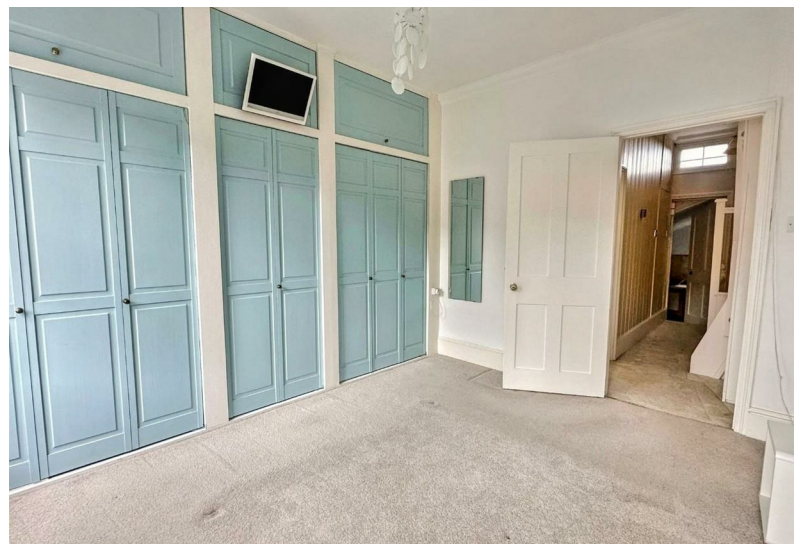


Second Floor  
Approx 14 sq m / 155 sq ft

 Denotes head height below 1.5m

This floorplan is only for illustrative purposes and is not to scale. Measurements of rooms, doors, windows, and any items are approximate and no responsibility is taken for any error, omission or mis-statement. Icons of items such as bathroom suites are representations only and may not look like the real items. Made with Made Snappy 360.





11 High Street, Windsor, Berkshire, SL4 1LD,  
T: 01753 833 118 | E: [info@hardings.co.uk](mailto:info@hardings.co.uk)  
[www.hardings.co.uk](http://www.hardings.co.uk)

