



# HARDINGS



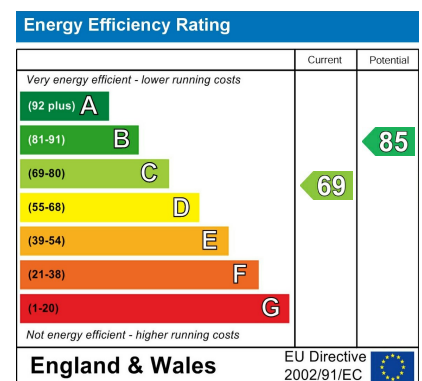
Wood Close  
Guide Price £500,000





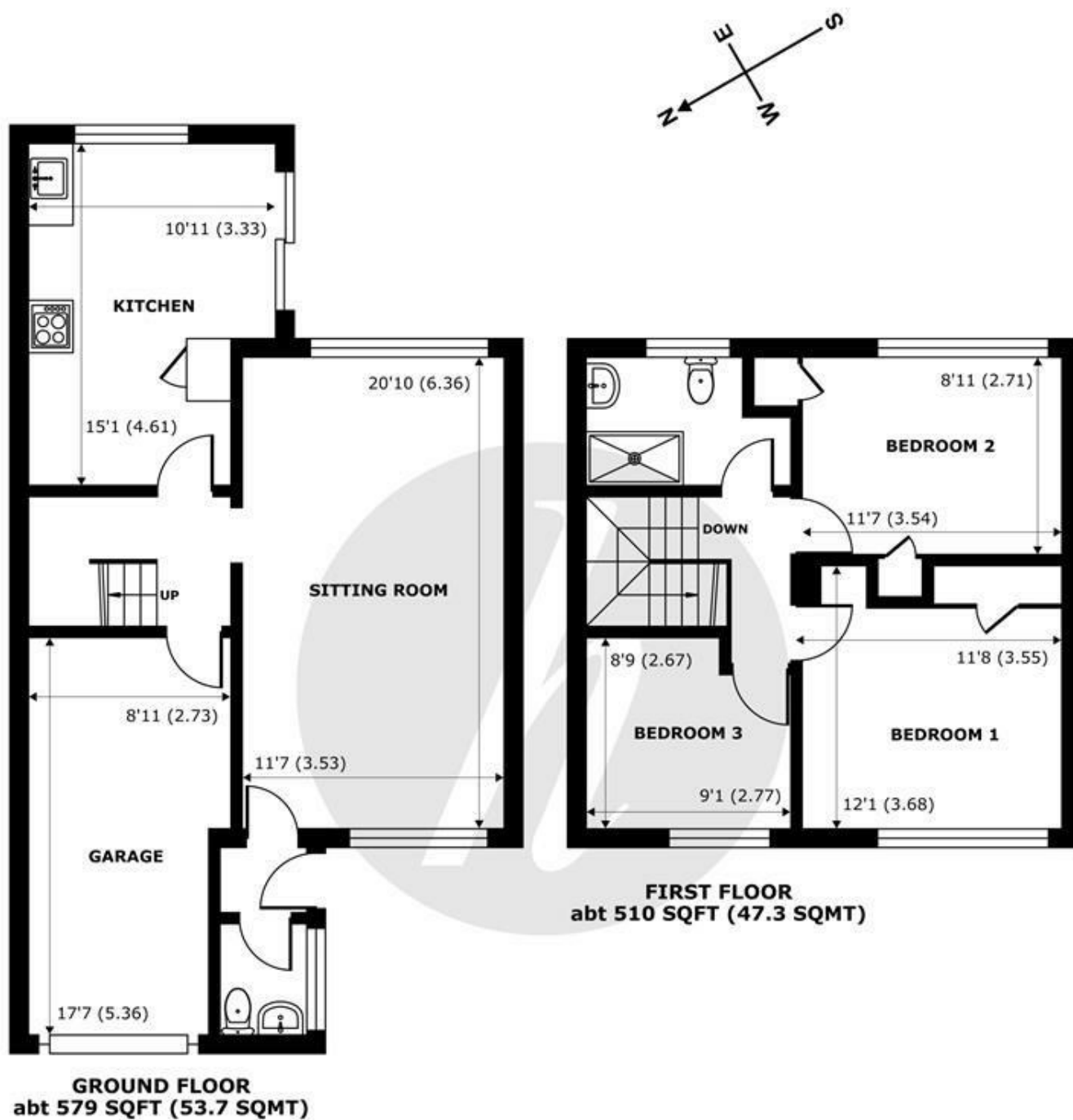


A great opportunity to acquire a three bedroom terraced property in need of modernisation and with potential to extend and remodel (STPP). Located in a quiet residential estate, overlooking the allotments, the property is just a short walk to the Great Park and the local amenities in Windsor Town Centre. Further benefits include, driveway parking for 2 cars and newly installed air heat source pump heating.



## Features

- Three Bedrooms Terraced House
- Potential to Extend & Modernise
- Walking Distance to Windsor Town Centre and Great Park
- New Air Source Heat Pump
- Driveway Parking for Two Cars
- Garage
- Rear Access to Property



Floor plan produced in accordance with RICS Property Measurement 2nd Edition, Incorporating International Property Measurement Standards (IPMS2 Residential). © nichecom 2025. Produced for Hardings. REF: 1306120







11 High Street, Windsor, Berkshire, SL4 1LD,  
T: 01753 833 118 | E: [info@hardings.co.uk](mailto:info@hardings.co.uk)  
[www.hardings.co.uk](http://www.hardings.co.uk)

