



HARDINGS




Oxford Road
Asking Price £770,000



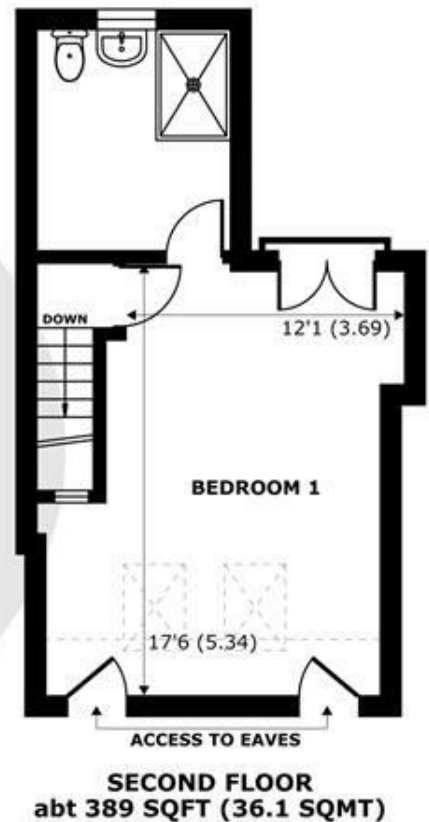
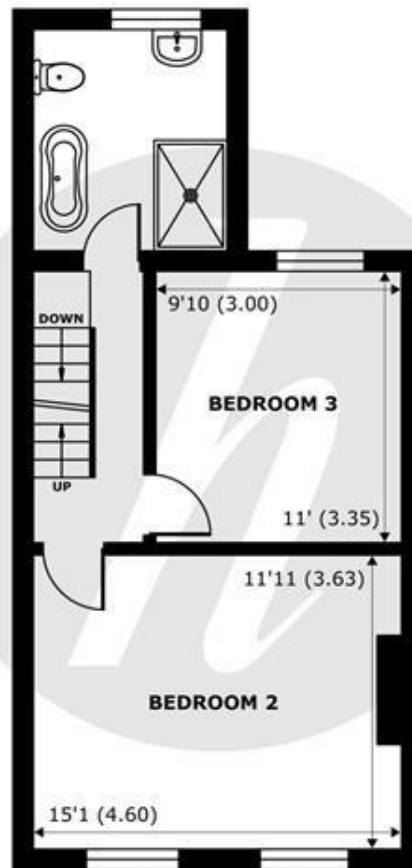
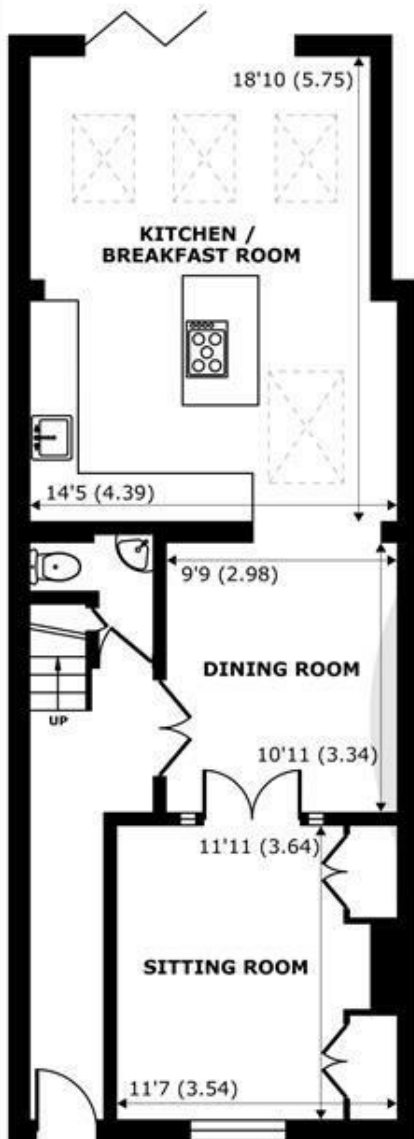


A beautifully presented and charming Victorian three-bedroom terraced home, ideally located just a short distance from Windsor Town Centre. The property boasts a spacious eat-in family kitchen with bi-fold doors that open onto a private garden. In addition, there are two further reception rooms on the ground floor, offering ample living space. Conveniently situated near excellent schools, nurseries, and Windsor & Eton Train Station.

Energy Efficiency Rating		
	Current	Potential
Very energy efficient - lower running costs		
(92 plus) A		
(81-91) B		87
(69-80) C	77	
(55-68) D		
(39-54) E		
(21-38) F		
(1-20) G		
Not energy efficient - higher running costs		
England & Wales	EU Directive 2002/91/EC 	

Features

- Three Double Bedrooms
- Two further Reception Rooms
- Private Garden
- Quiet Residential Road
- Shaker Style Eat in Kitchen with Built in Appliances
- Family Bathroom & Ensuite Shower Room
- Downstairs Cloakroom
- Moments from Windsor Town Centre



Denotes restricted head height

Oxford Road, Windsor, SL4

Approximate Internal Area = 1343 sq ft / 124.7 sq m

Approximate External Area = 1625 sq ft / 150.9 sq m

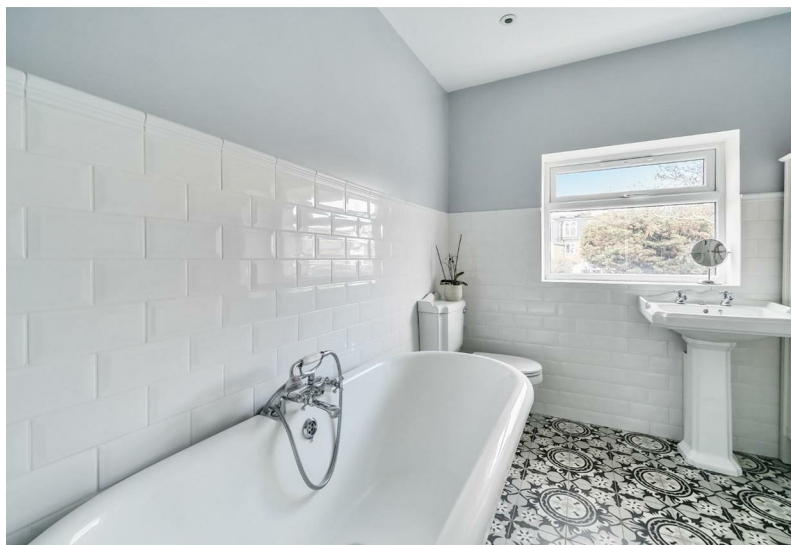
Limited Use Area(s) = 31 sq ft / 2.8 sq m

For identification only - Not to scale



Floor plan produced in accordance with RICS Property Measurement 2nd Edition, Incorporating International Property Measurement Standards (IPMS2 Residential). © nichecom 2025. Produced for Hardings. REF: 1237261





11 High Street, Windsor, Berkshire, SL4 1LD,
T: 01753 833 118 | E: info@hardings.co.uk
www.hardings.co.uk

