



Vansittart Road
Offers In The Region Of £1,150,000



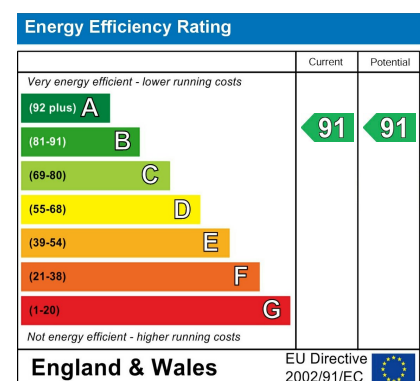


An exceptional opportunity to own this beautifully presented 5-bedroom terraced home on Vansittart Road, Windsor, offered with STAMP DUTY PAID. Situated in a highly desirable town centre location, this stylish property combines generous living space with modern comforts, off-street parking and excellent transport links, creating the perfect blend of convenience and contemporary family living.

The ground floor comprises an impressive open-plan kitchen/dining space that flows into a generous reception area, enhanced by high ceilings and bi-fold doors leading to a private west-facing garden. Additional conveniences include a separate utility room and cloakroom.

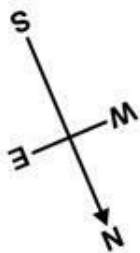
The principal bedroom occupies the first floor and benefits from a private terrace, ample fitted storage, and an en-suite bathroom. Three further double bedrooms each enjoy their own en-suite facilities.

Ideally positioned for mainline rail services to London (Waterloo and Paddington), as well as the M25 and M40, the property also offers excellent access to highly regarded schools and Heathrow Airport. Situated on a quiet residential road within easy walking distance of Windsor town centre, the property features stylish, beautifully appointed accommodation throughout.

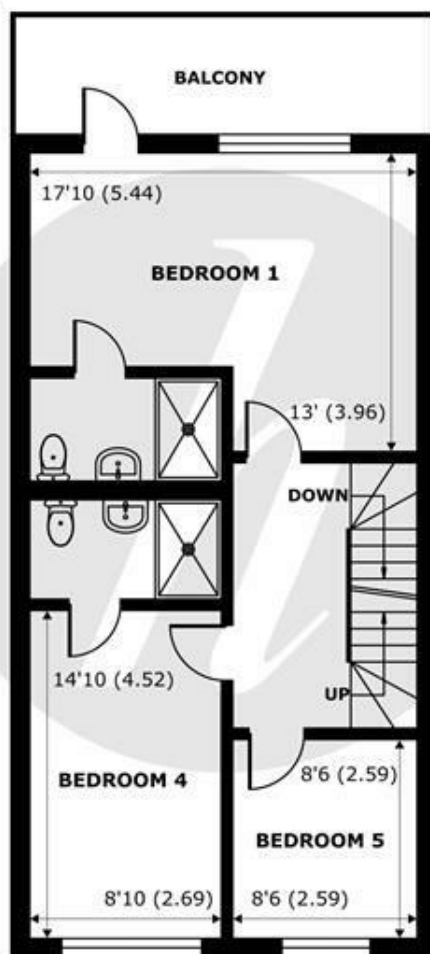


Features

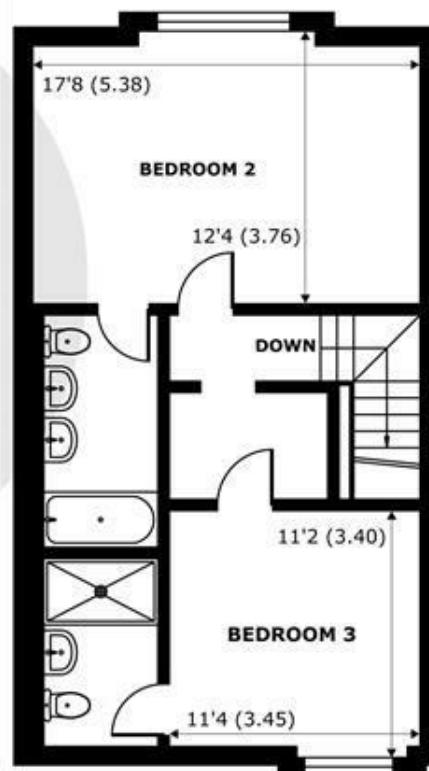
- Large Open Plan Kitchen/ Dining Room/Reception Room
- 3 Further Double Bedrooms, 3 Ensuite Bathrooms
- No Onward Chain
- Utility Room with WC
- Off Street Parking for Two Cars
- Principal Bedroom with En-Suite Bedroom and Terrace
- Study
- Bi-Fold Doors onto Garden
- Town Centre Location
- Stamp Duty Paid



GROUND FLOOR
abt 824 SQFT (76.5 SQMT)



FIRST FLOOR
abt 712 SQFT (66.1 SQMT)



FIRST FLOOR
abt 649 SQFT (60.2 SQMT)

Vansittart Road, Windsor, SL4

Approximate Internal Area = 1910 sq ft / 177.4 sq m

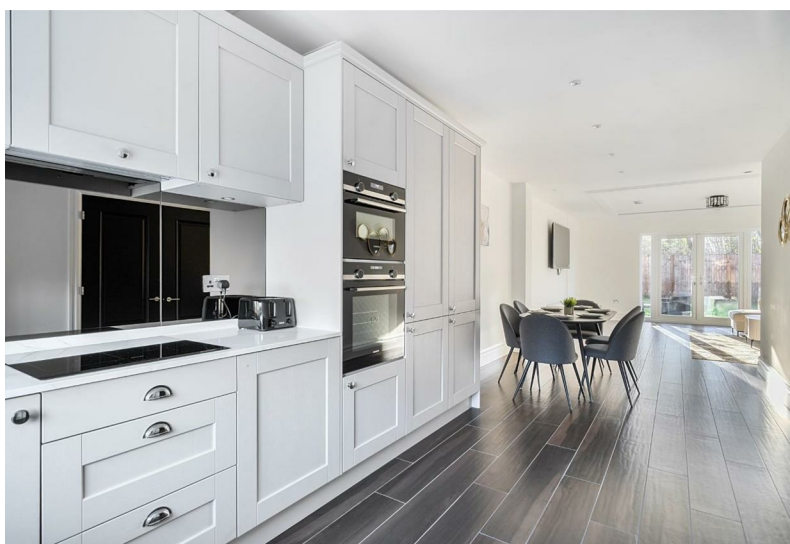
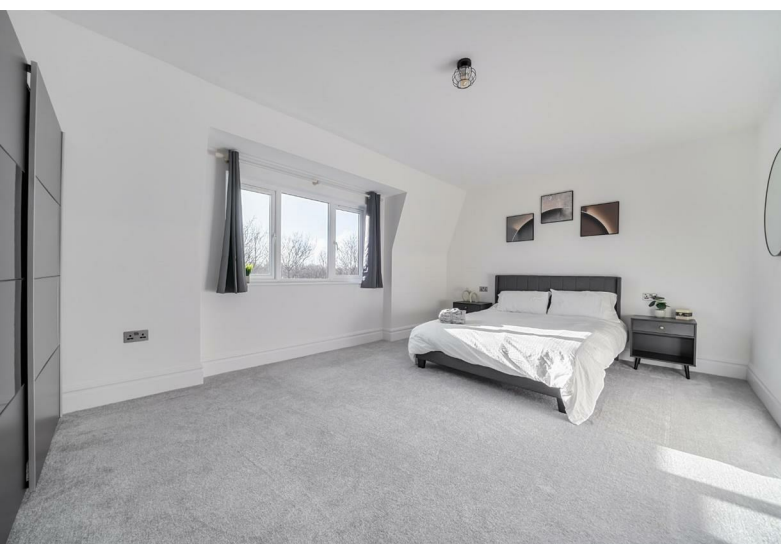
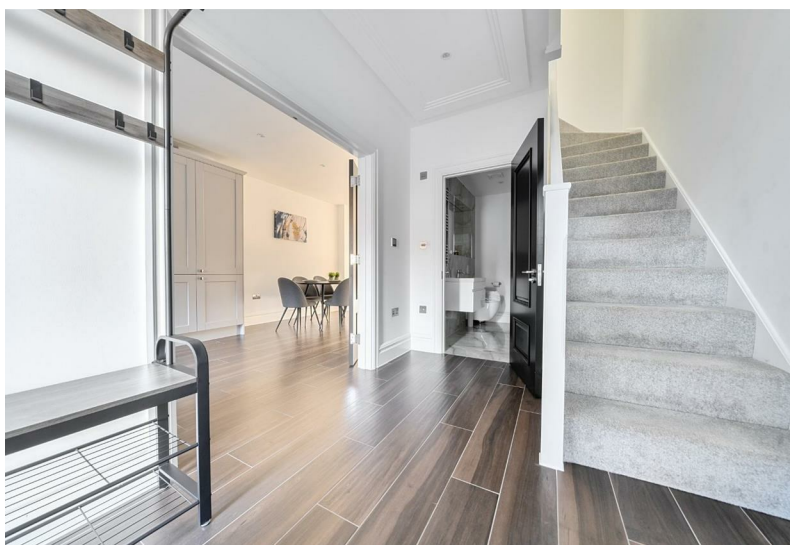
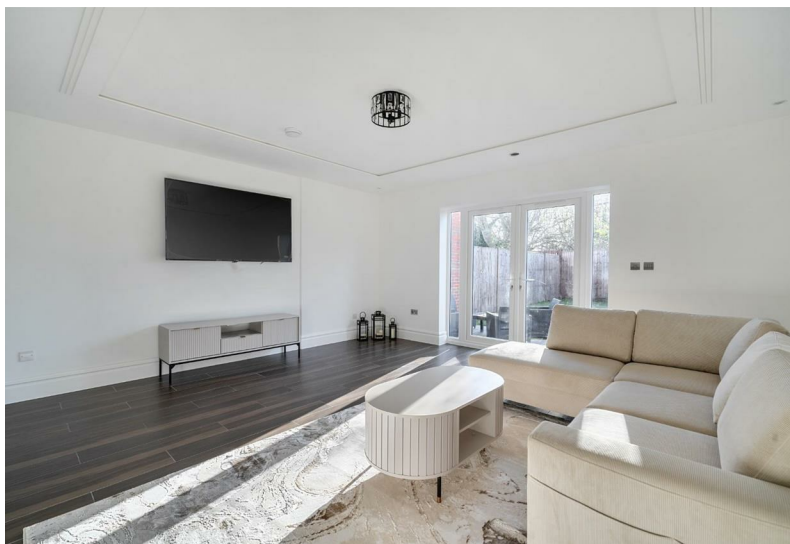
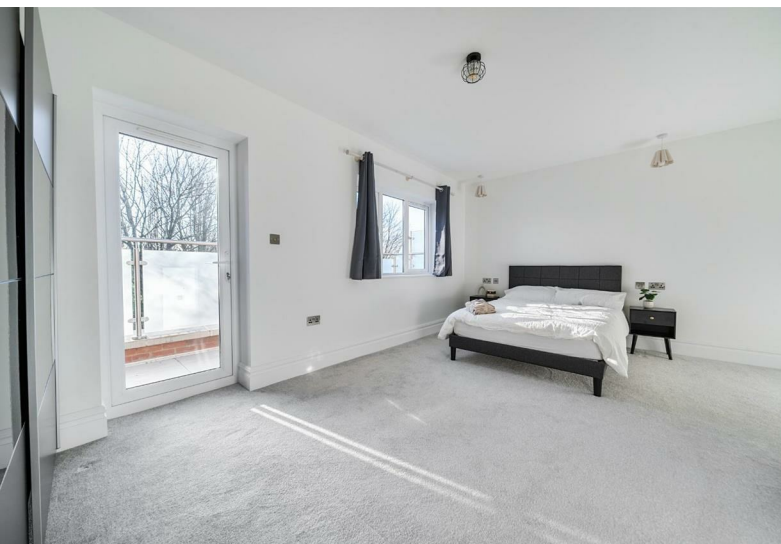
Approximate External Area = 2185 sq ft / 203 sq m

For identification only - Not to scale



Floor plan produced in accordance with RICS Property Measurement Standards incorporating International Property Measurement Standards (IPMS2 Residential). © nichecom 2024. Produced for Hardings. REF: 1164092





11 High Street, Windsor, Berkshire, SL4 1LD,
T: 01753 833 118 | E: info@hardings.co.uk
www.hardings.co.uk

