



HARDINGS

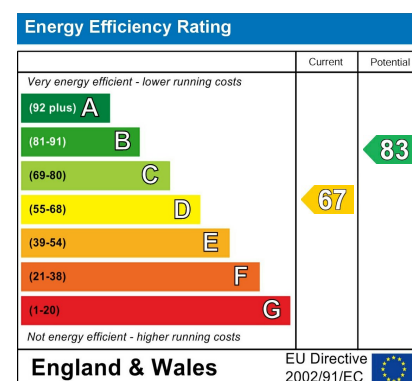


St Leonards Road
Asking Price £485,000



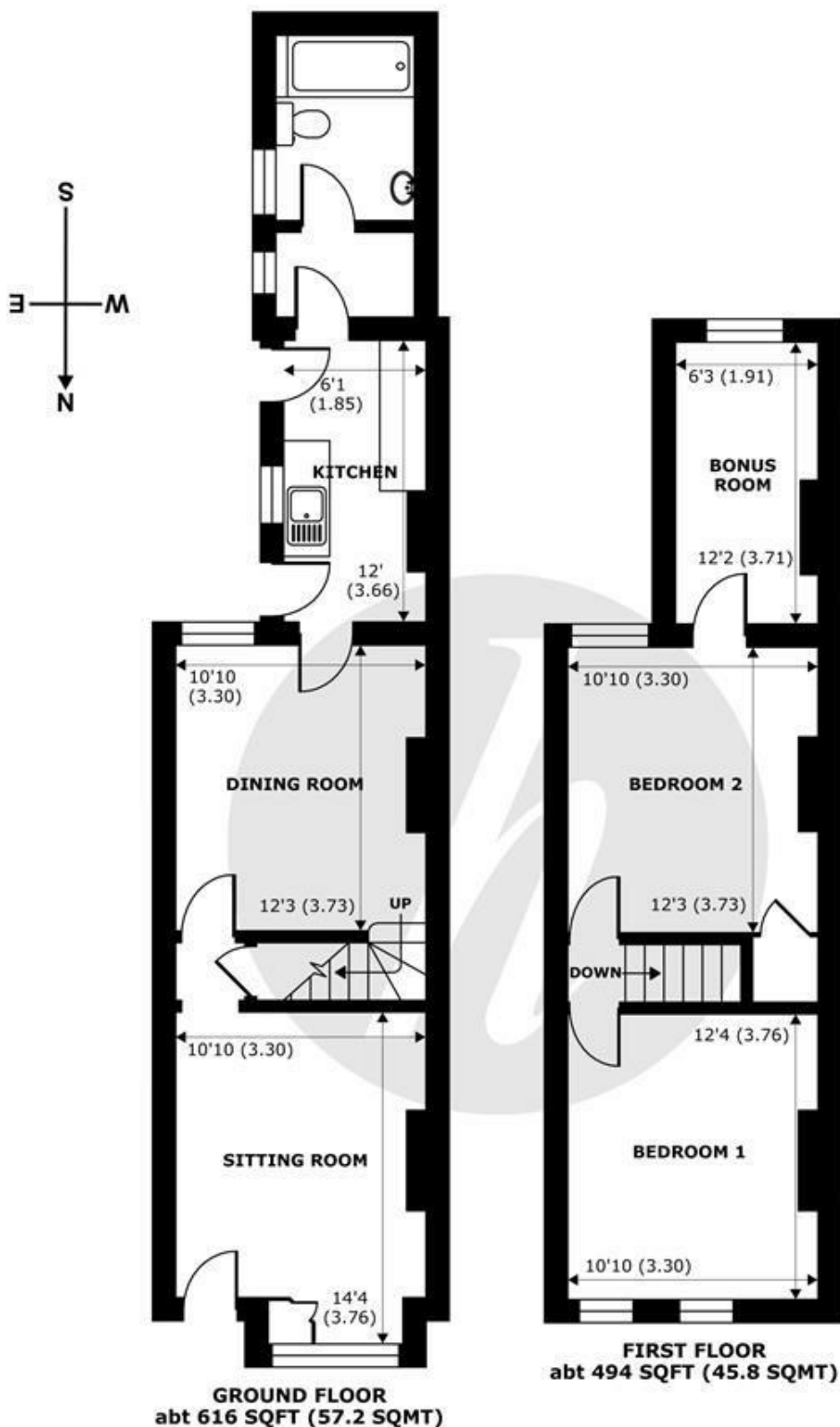


A two bedroom traditional cottage, close to Windsor Town Centre. Featuring two reception rooms and two double bedrooms and a further study/office upstairs. The property comes with a good sized garden with rear access and offered to the market with no onward chain.



Features

- Two Bedroom Terraced House
- Galley kitchen with appliances
- South Facing Garden
- Period Features
- Separate Dining Room
- Further Bedroom/ Study/Office Space
- No Onward Chain
- Potential to Extend (STPP)



St. Leonards Road, Windsor, SL4

Approximate Internal Area = 862 sq ft / 80.1 sq m

Approximate External Area = 1110 sq ft / 103.1 sq m

For identification only - Not to scale



Floor plan produced in accordance with RICS Property Measurement 2nd Edition, Incorporating International Property Measurement Standards (IPMS2 Residential). © nichecom 2025. Produced for Hardings. REF: 1348051





11 High Street, Windsor, Berkshire, SL4 1LD,
T: 01753 833 118 | E: info@hardings.co.uk
www.hardings.co.uk

