



HARDINGS



Hanover Way
£2,350





Nestled in the charming area of Hanover Way, Windsor, this delightful semi-detached home boasts four well proportioned bedrooms and two bathrooms.

The heart of the home is undoubtedly the generous living space and kitchen, which is perfect for both relaxation and entertaining. The kitchen is designed with ample storage, making it a practical space. The large garden, complete with a patio, is a wonderful extension of the home. For those with vehicles, the property boasts a driveway that accommodates up to three cars.

This property not only provides a comfortable living environment but also benefits from its prime location in Windsor, known for its rich history and vibrant community. With local amenities, schools, and parks nearby, this home is perfectly situated for modern family living.

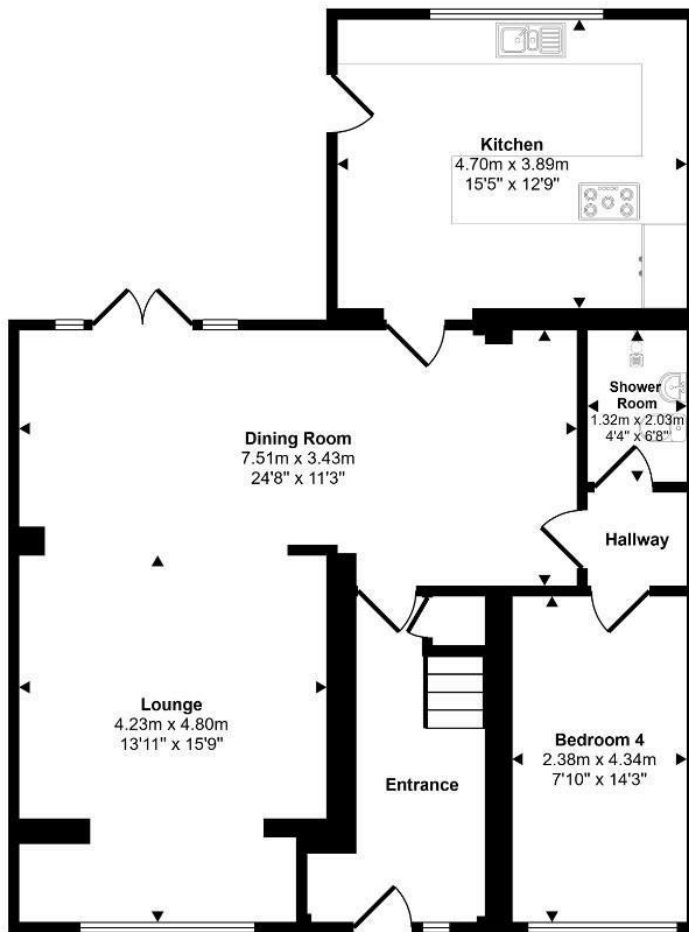
Offered Unfurnished, available Now.

Features

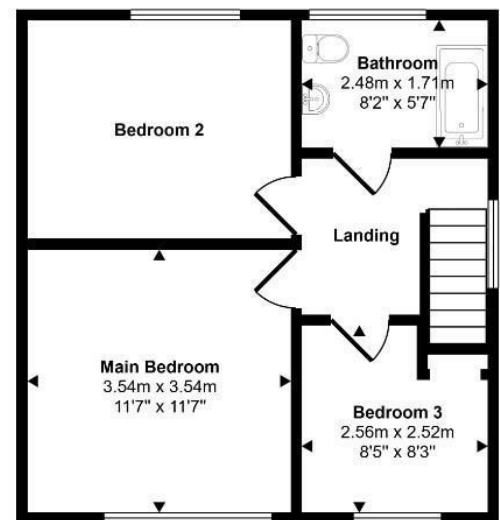
- Four bedrooms
- Downstairs shower room
- Large rear garden
- Open-plan living space
- Unfurnished
- Family bathroom
- Off-street parking for 3 cars
- Semi-detached
- Modern extended kitchen
- Available as soon as possible

Energy Efficiency Rating		
	Current	Potential
Very energy efficient - lower running costs		
(92 plus) A		83
(81-91) B		
(69-80) C		
(55-68) D	59	
(39-54) E		
(21-38) F		
(1-20) G		
Not energy efficient - higher running costs		
England & Wales		EU Directive 2002/91/EC

Approx Gross Internal Area
132 sq m / 1418 sq ft

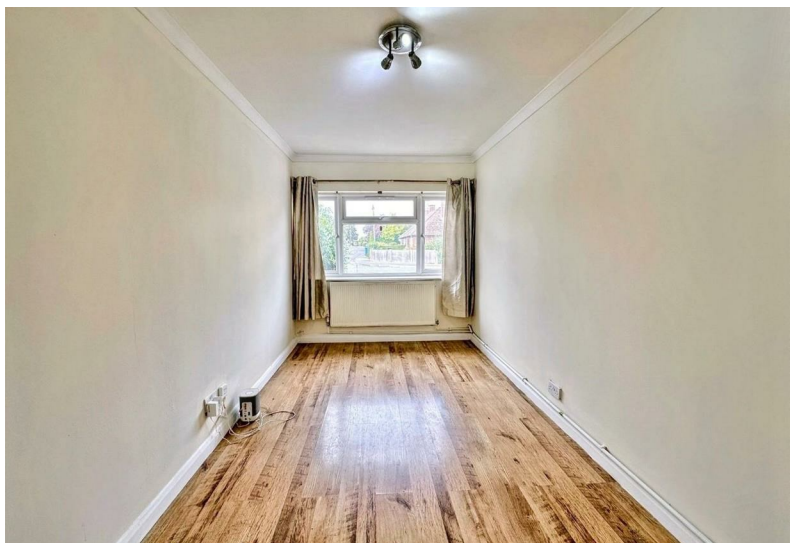


Ground Floor
Approx 90 sq m / 974 sq ft



First Floor
Approx 41 sq m / 444 sq ft

This floorplan is only for illustrative purposes and is not to scale. Measurements of rooms, doors, windows, and any items are approximate and no responsibility is taken for any error, omission or mis-statement. Icons of items such as bathroom suites are representations only and may not look like the real items. Made with Made Snappy 360.



11 High Street, Windsor, Berkshire, SL4 1LD,
T: 01753 833 118 | E: info@hardings.co.uk
www.hardings.co.uk

