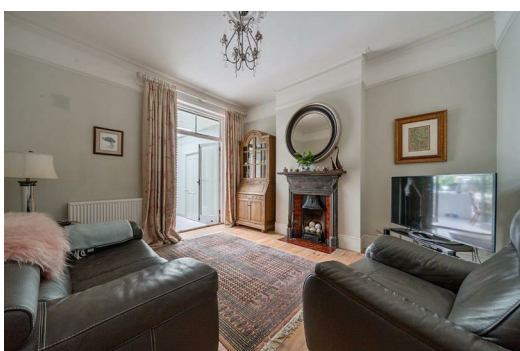




HARDINGS

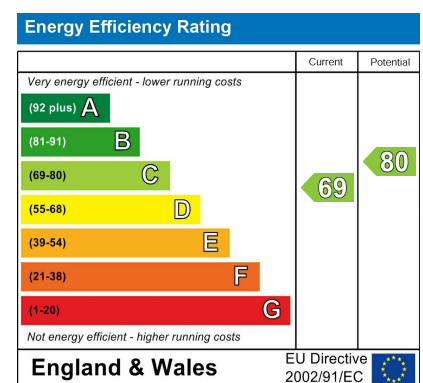


St. Marks Road
Guide Price £1,475,000



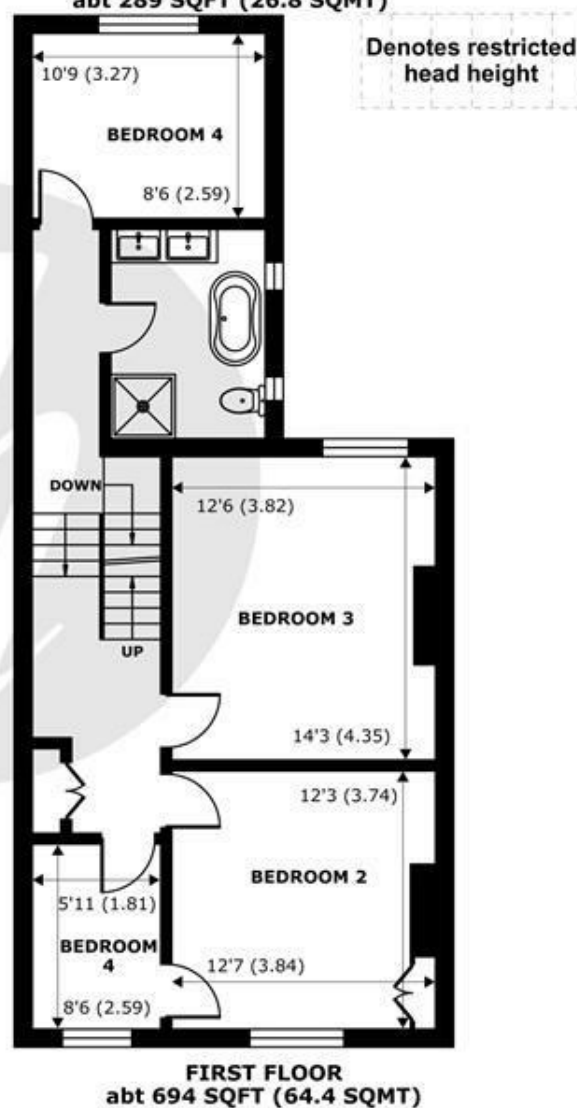
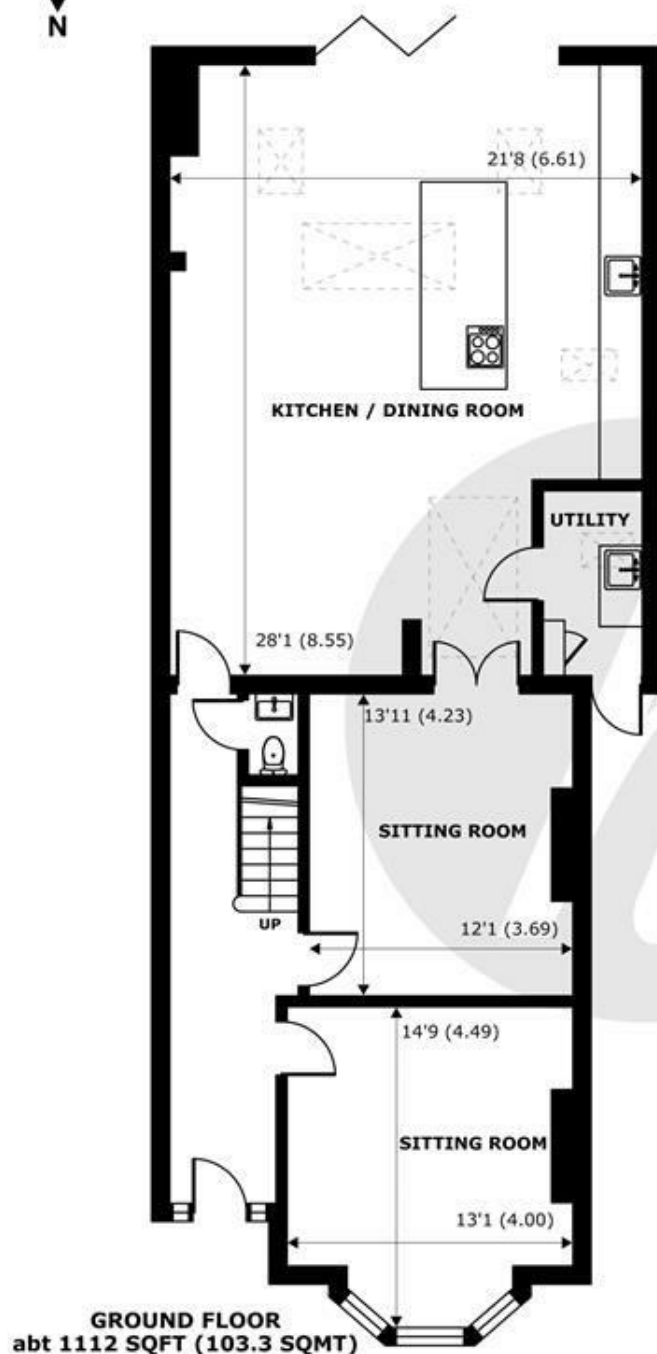
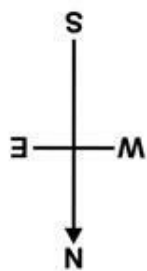


A beautifully stylish and substantial halls-adjoining semi-detached period villa that's been cleverly remodelled and refurbished to create impressive and well proportioned living accommodation. Located on a popular residential road, just moments' walk to the hustle and bustle of the local shops and restaurants, the property benefits from driveway parking for one car, five bedrooms, a superb open plan kitchen/dining/sitting room with bi-folding doors onto a pretty south facing walled garden, side access, an abundance of period features and utility room.



Features

- Semi-Detached Period Villa
- 5 Bedrooms, 2 Bathrooms (1 x en-suite)
- Halls Adjoining
- Period Features
- Town Centre Location, Close to Local Shops, Restaurants and Direct Rail Links to London
- Driveway Parking for 1 Car
- Stunning Open Plan Kitchen/Living/Dining Room with Bi-Folding Doors onto Garden
- Walled South Facing Garden with Side Access
- Utility Room & Downstairs Cloakroom
- The Owner is a Relative of an Employee at Hardings



St. Marks Road, Windsor, SL4

Approximate Internal Area = 2095 sq ft / 194.6 sq m

Approximate External Area = 2447 sq ft / 227.3 sq m

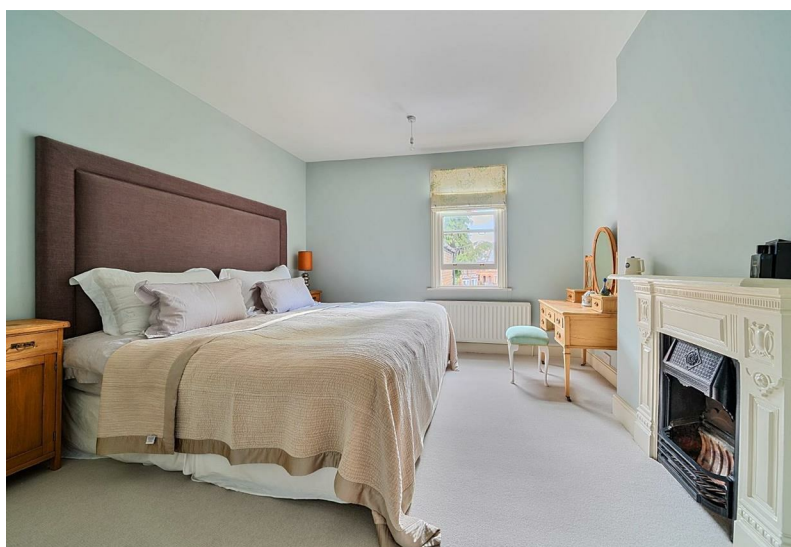
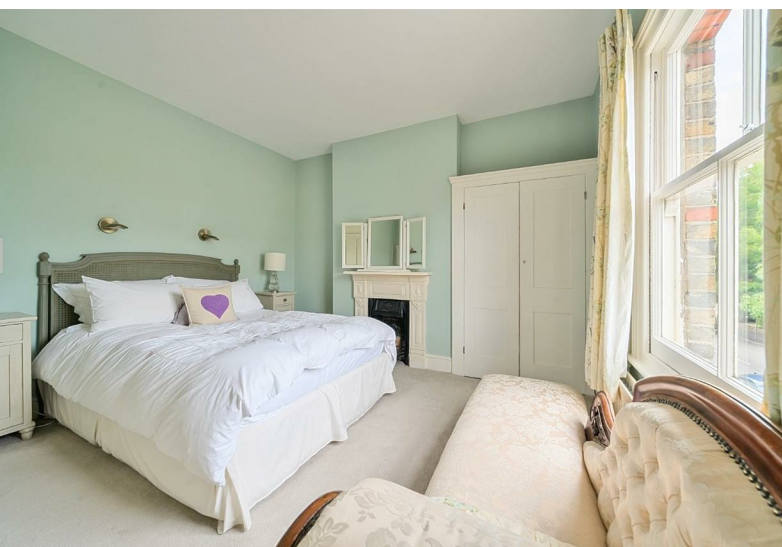
Limited Use Area(s) = 48 sq ft / 4.4 sq m

For identification only - Not to scale



Floor plan produced in accordance with RICS Property Measurement 2nd Edition, Incorporating International Property Measurement Standards (IPMS2 Residential). © nichecom 2025. Produced for Hardings. REF:1333306





11 High Street, Windsor, Berkshire, SL4 1LD,
T: 01753 833 118 | E: info@hardings.co.uk
www.hardings.co.uk

