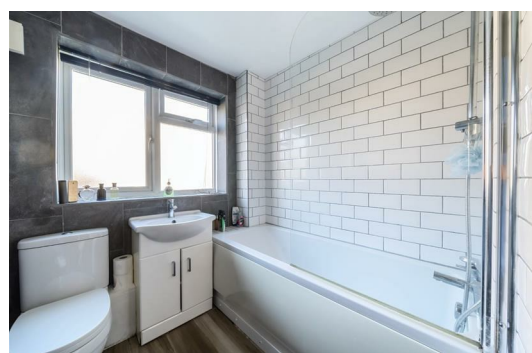
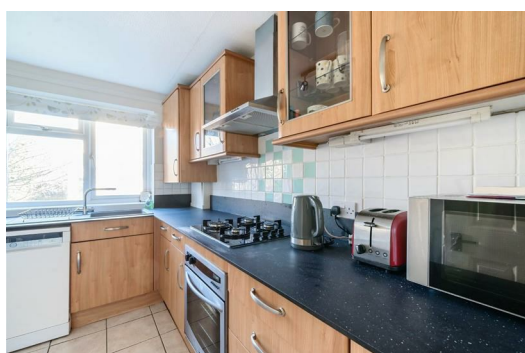




HARDINGS




St Leonards Road
£1,600 PCM





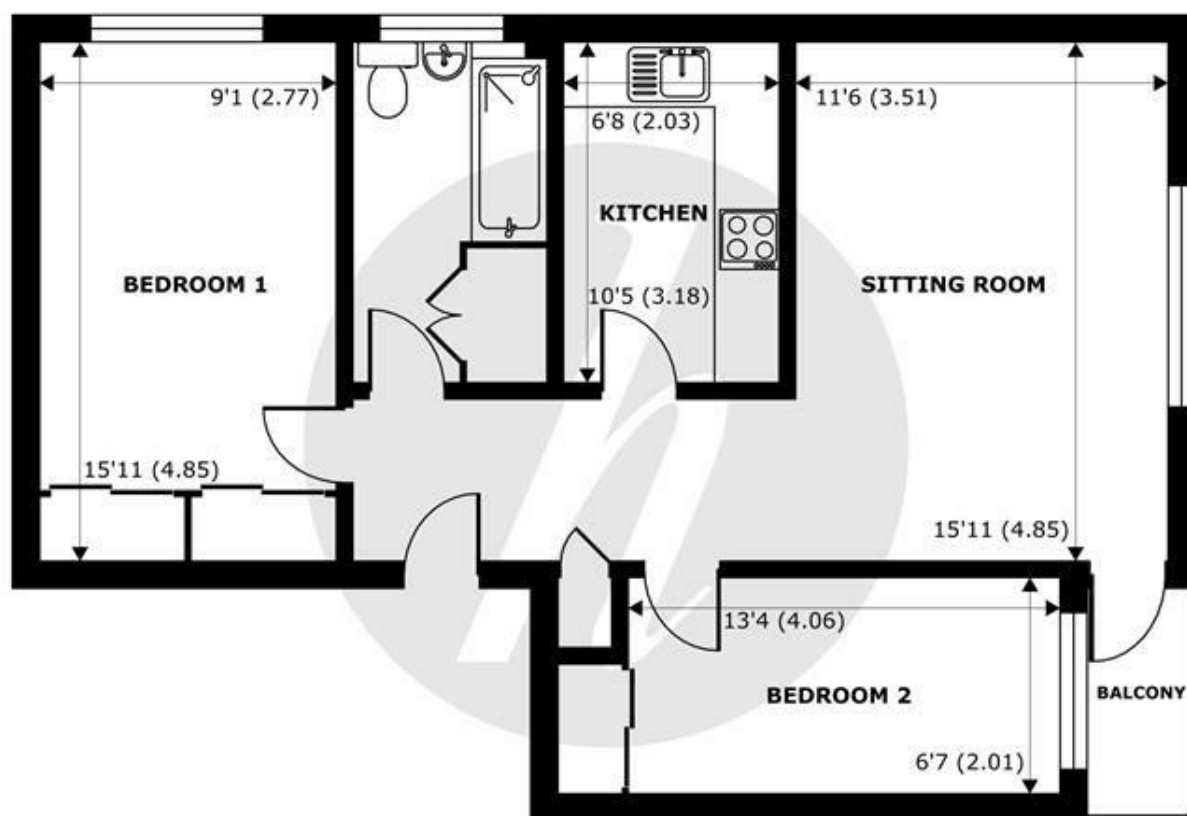
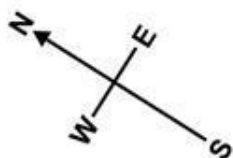
A spacious and well presented first floor, two bedroom apartment in a purpose built block, situated just a short walk from Windsor town centre.

Offered unfurnished, available end of October.

Energy Efficiency Rating		
	Current	Potential
Very energy efficient - lower running costs		
(92 plus) A		
(81-91) B	82	86
(69-80) C		
(55-68) D		
(39-54) E		
(21-38) F		
(1-20) G		
Not energy efficient - higher running costs		
England & Wales	EU Directive 2002/91/EC 	

Features

- Two bedroom apartment
- Private balcony
- Bathroom with storage cupboard
- Off street parking
- Tax Band D & EPC C
- Spacious sitting/dining room
- Fitted kitchen
- Large entrance hall
- Unfurnished
- Off-street parking available



FIRST FLOOR
abt 668 SQFT (62.1 SQMT)

Montpellier Court, St. Leonards Road, Windsor, SL4

Approximate Internal Area = 668 sq ft / 62.1 sq m

Approximate External Area = 768 sq ft / 71.3 sq m

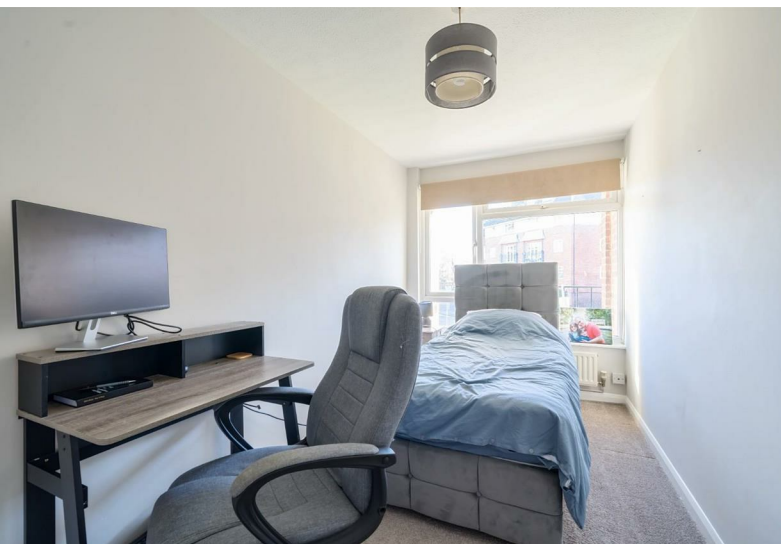
For identification only - Not to scale



Certified
Property
Measurer

Floor plan produced in accordance with RICS Property Measurement Standards incorporating International Property Measurement Standards (IPMS2 Residential). © nichecom 2024. Produced for Hardings. REF: 1075423





11 High Street, Windsor, Berkshire, SL4 1LD,
T: 01753 833 118 | E: info@hardings.co.uk
www.hardings.co.uk

