



HARDINGS

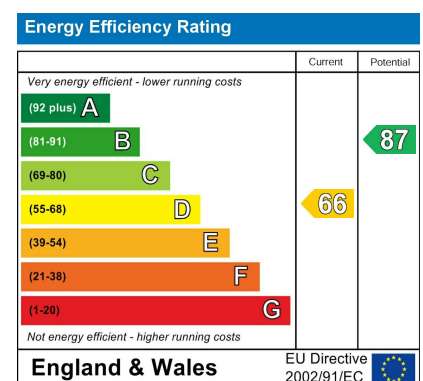


Elm Road
Asking Price £459,000



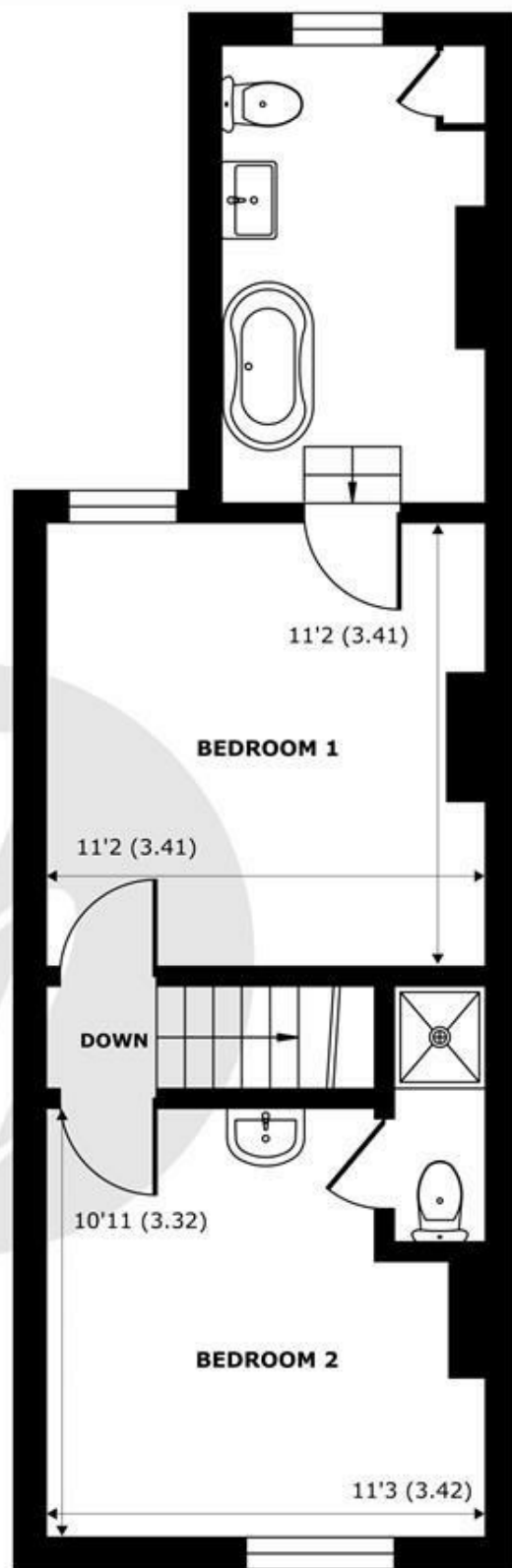
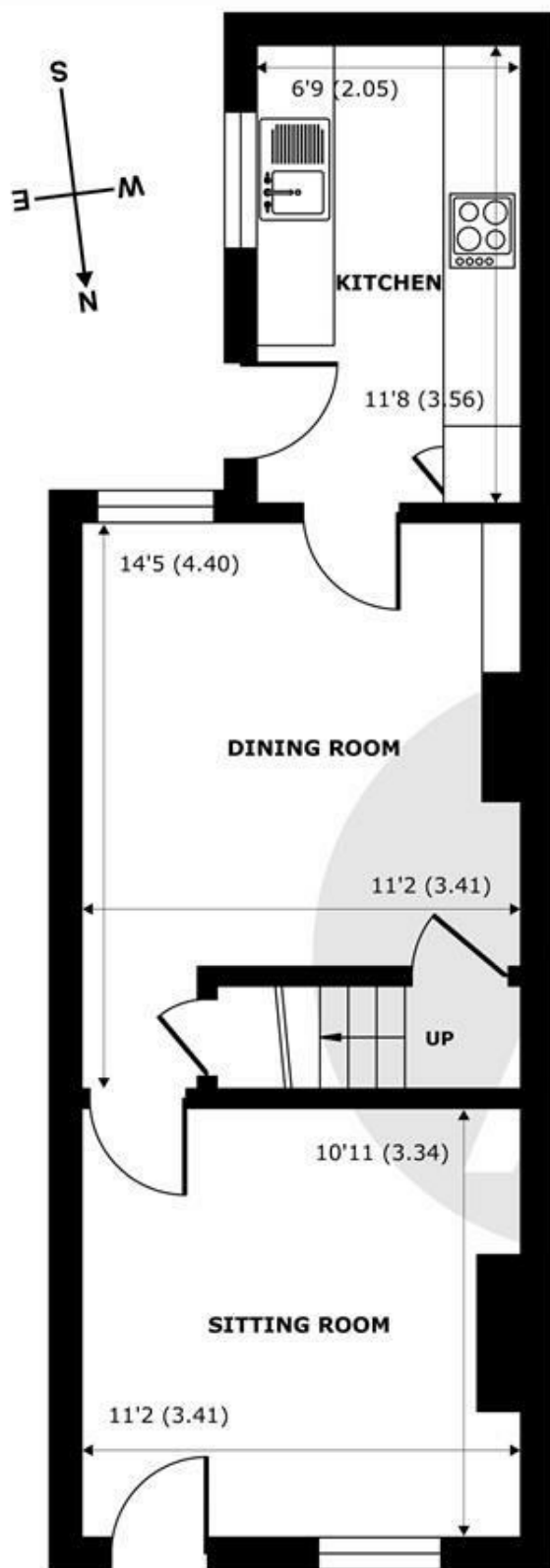


A charming Victorian terraced home boasts two spacious bedrooms and two well-appointed bathrooms. A welcoming front courtyard leads into a sitting room, followed by a separate dining area. At the rear of the property, is a fully integrated kitchen provides access to a south westerly facing private garden. The property is within easy walking distance of the town center and train stations and conveniently situated close to a variety of local amenities and offered to the marker chain free.



Features

- Two Bedroom Home
- Potential to Extend (STPP)
- Extensive South Westerly Facing Garden
- Two Bathrooms
- Front Reception Room
- Dining Area
- No Onward Chain
- Period Features



Elm Road, Windsor, SL4

Approximate Internal Area = 742 sq ft / 68.9 sq m

Approximate External Area = 910 sq ft / 84.5 sq m

For identification only - Not to scale



Floor plan produced in accordance with RICS Property Measurement 2nd Edition, Incorporating International Property Measurement Standards (IPMS2 Residential). Produced for Hardings. REF: 1271865





11 High Street, Windsor, Berkshire, SL4 1LD,
T: 01753 833 118 | E: info@hardings.co.uk
www.hardings.co.uk

