



HARDINGS

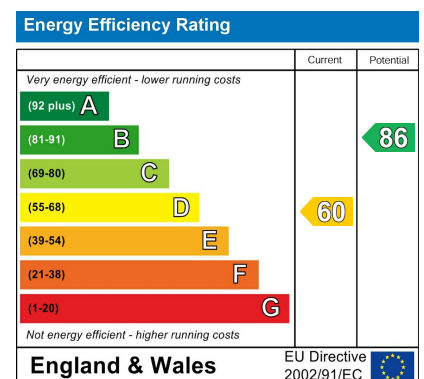


Victor Road
Guide Price £800,000



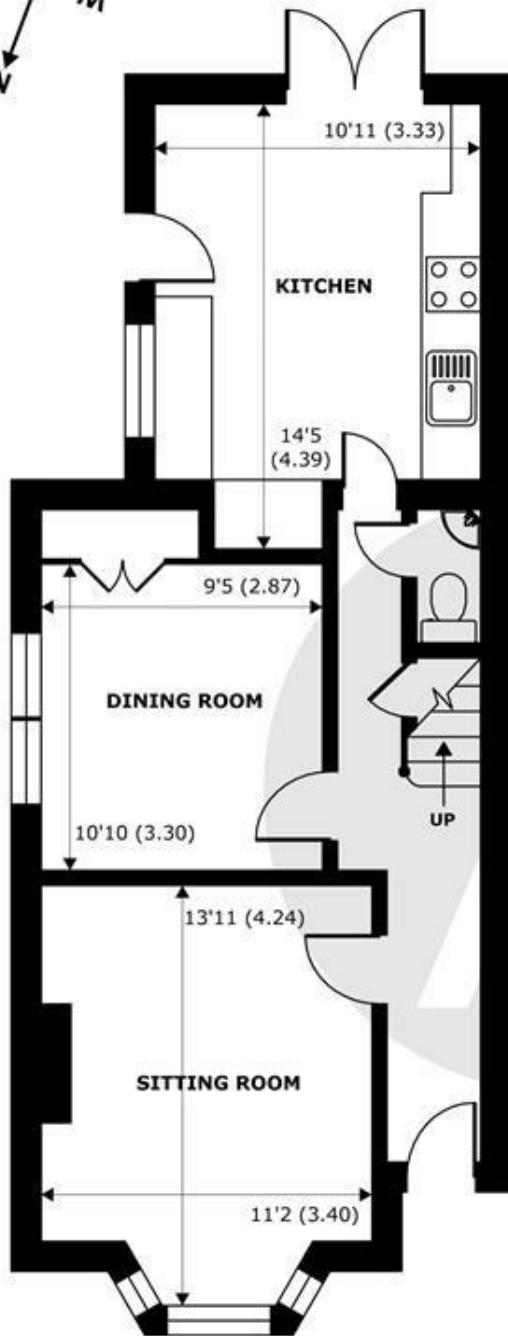
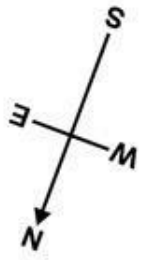


An impressive 3 bedroom bay-fronted Victorian property occupying a prime position on a popular residential road, just a short walk from Windsor Great Park and Windsor Town Centre. Benefitting from 2 off street parking spaces with the potential to build a garage, this end of terrace house provides light and spacious living accommodation with a generous south facing garden with rear and side access. Further benefits include period features and high ceilings throughout, the opportunity to extend (STPP) and no onward chain.

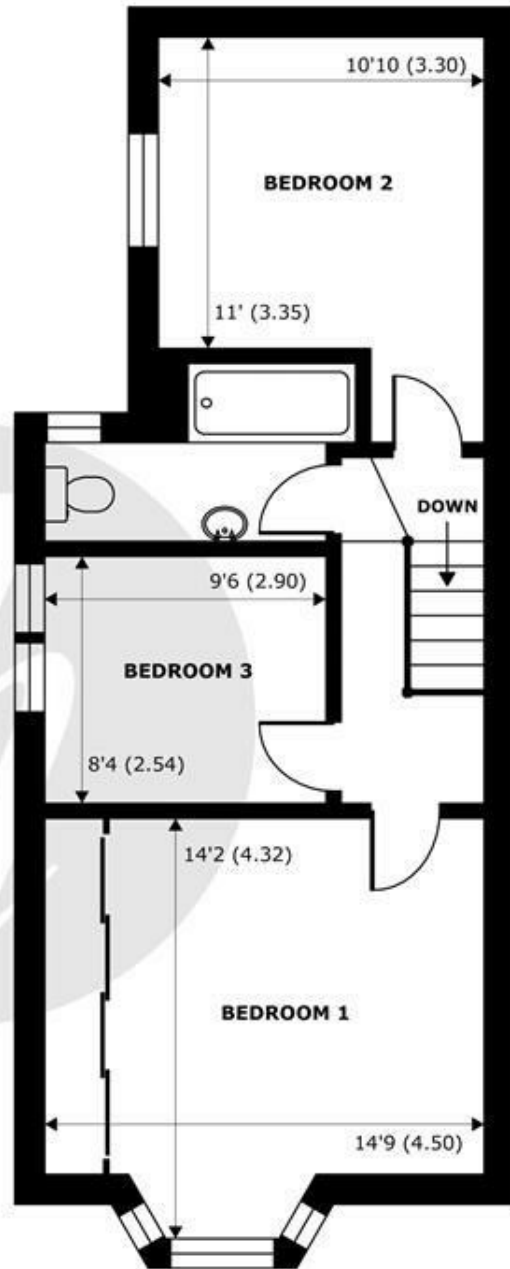


Features

- Victorian End of Terrace Property
- Period Features and High Ceilings Throughout
- South Facing Garden With Rear/Side Access
- Popular Residential Location
- Potential to Extend (STPP)
- 3 Bedrooms
- Bay-Fronted
- Off Street Parking For 2 Cars
- Close to Windsor Great Park
- No Onward Chain



GROUND FLOOR
abt 630 SQFT (58.5 SQMT)



FIRST FLOOR
abt 640 SQFT (59.5 SQMT)

Victor Road, Windsor, SL4

Approximate Internal Area = 1044 sq ft / 97 sq m

Approximate External Area = 1270 sq ft / 118 sq m

For identification only - Not to scale



Floor plan produced in accordance with RICS Property Measurement Standards incorporating International Property Measurement Standards (IPMS2 Residential). © nichecom 2022. Produced for Hardings. REF: 890188





11 High Street, Windsor, Berkshire, SL4 1LD,
T: 01753 833 118 | E: info@hardings.co.uk
www.hardings.co.uk

